

The Social Buzz

School of Social Work

October 31- November 6, 2024

MESSAGE FROM SOCIAL BUZZ



This week, our Social Buzz comes with a special note. Our director, Dr. Mary Nienow, just returned from the Council of Social Work Education (CSWE) conference with new ideas and inspiration. However, she's taking a short break after testing positive for COVID-19. We send Mary our best wishes for a swift recovery and look forward to her updates soon!

In her absence, we're excited to share that our school has been actively participating in recruitment events at high schools and junior colleges across El Paso, Las Cruces and surrounding areas, connecting with future social work professionals and spreading the word about our program.

Stay tuned for more updates and upcoming opportunities at NMSU!



The Social Buzz



socialwork.nmsu.edu

IMPORTANT REMINDER

**PRESENTED BY BACHELORS
STUDENTS OF SOCIAL WORK
ASSOCIATION**

Coffee, Tea, Cocoa STAND



**Stop by and
make a
difference!**

FRIDAY NOV 8

**8:30AM-11AM
CORBETT
INTERNATIONAL
MALL**



The Social Buzz



socialwork.nmsu.edu

IMPORTANT REMINDER

Social Work Student

PEER SUPPORT

Collaboration to support student success

**SCAN QR CODE TO MAKE AN
APPOINTMENT**



**Don't be shy!
Ask for help!**



The Social Buzz



socialwork.nmsu.edu



**It's a great
day to be an
Aggie!**

**NM
STATE**

First Generation

6th Annual First-Generation Celebration

Save the Date!

**NMSU First-Gen Celebrity Spotlight
Fall 2024 Semester**

NMSU's first-generation college students, faculty, staff, and alumni will be highlighted via NMSU's Student and Staff Hotline. Complete the "I Am A First Gen Aggie" form with the QR Code, on the right, to nominate yourself or someone else.



Honors College First Generation Open House
Wednesday, November 6 | 11:00 a.m. to 1:30 p.m.
William Conroy Honors College

Movie: "Real Women Have Curves"
Wednesday, November 6 | 6:00 p.m. to 8:00 p.m.
Corbett Auditorium

First-Gen Celebration
Thursday, November 7 | 10:00 a.m. to 2:00 p.m.
Corbett Center Student Union

To commemorate the day, a First-Gen Proclamation will happen at 10:15 a.m.



The Social Buzz



socialwork.nmsu.edu





NMSU Child Welfare
Scholars attend free of
charge. First come, first
serve to all other
participants.

What a great
opportunity!

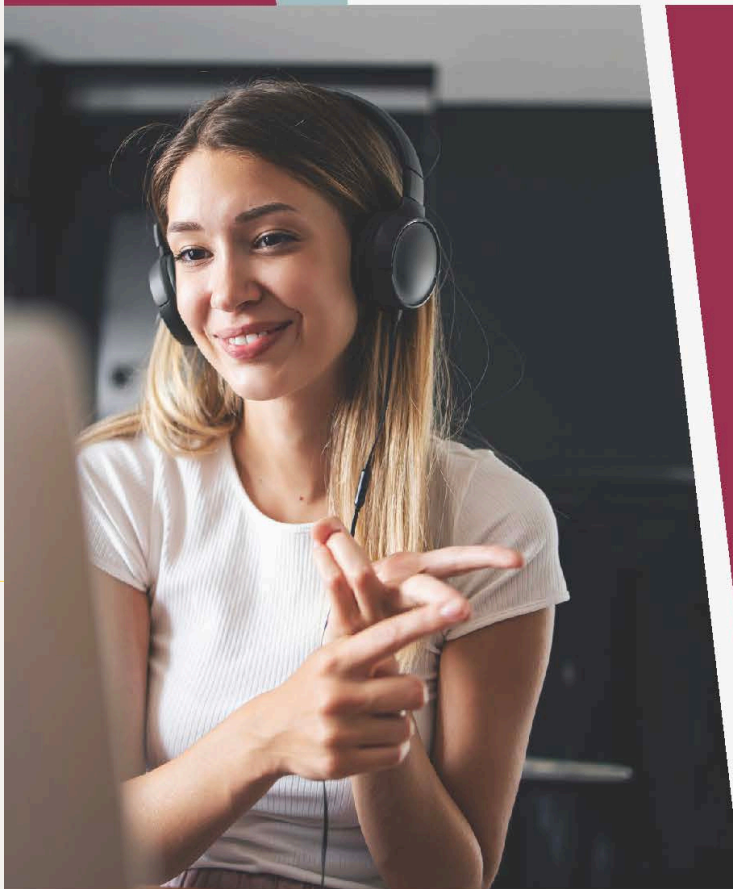
BE BOLD. Shape the Future.®
New Mexico State University



2-DAY LICENSING EXAM SEMINAR

ONLINE COURSE

Facilitators will help participants understand the exam dynamics and demonstrate how to effectively use strategies for selecting and using the information provided within each exam item to choose the most appropriate choice to increase their success with the exam.



11/08/24 & 11/09/24

9:00 AM - 4:00 PM

\$50 - STUDENTS
\$75 - NON-STUDENTS

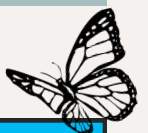
Facing Financial Difficulties?
Email us to explore
scholarship opportunities!

REGISTER HERE



CALL FOR MORE INFO
575-646-5711

CHILD WELFARE SCHOLAR PROGRAM



The Social Buzz



socialwork.nmsu.edu



IMPORTANT REMINDER



BEYOND THE SURFACE: TRAUMA-INFORMED CARE AND MOTIVATIONAL INTERVIEWING



Matthew S. Bennett MA, MBA

Event Details

- 8 November, 2024 | At 9:00 am to 4:30 pm**
- NMSU Hardman and Jacobs Undergraduate Learning Center, Room 210
 - Virtual via Zoom (link will be sent to registered participants)
- Register here: <https://shorturl.at/L3NRK>

Scan to Register



SPEAKER FACTS

- **Matthew S. Bennett** is an expert in trauma-informed care, helping communities heal through a participant-centered approach. He focuses on improving learning, retention, and application to deliver healing-based solutions.

Featured Book:

- "Connecting Paradigms: A Trauma-Informed & Neurobiological Framework for Motivational Interviewing Implementation" Available for purchase.

Objectives:

- Understand how trauma affects health risks.
- Apply Motivational Interviewing to patient care.
- Use TIMI for effective change talk.

Sponsoring Organization

- NMSU School of Nursing
- SAMHSA GLS Mental Health and Suicide Prevention Grant
- NMSU School of Social Work
- NMSU Counseling and Educational Psychology Department (5.5 CEUs for Social Work and CEP- Pending Nursing)

Registered?
Done



Beyond the Surface; Trauma-Informed Care and Motivational Interviewing

presented by

Matthew S. Bennett, MA, MBA

A relentless advocate for trauma-informed care and other interventions that help people and communities heal. He utilizes a participant-centered approach to maximize learning, retention, and application

Matt's mission is to guide individuals and organizations in delivering exceptional healing-based solutions. His related book will be available on-site and by ordering; Connecting Paradigms: A Trauma-Informed & Neurobiological Framework for Motivational Interviewing Implementation by Matthew S. Bennett (Author)

Sponsoring organization

NMSU School of Nursing SAMHSA GLS Mental Health and Suicide Prevention Grant

NMSU School of Social Work

NMSU Counseling and Educational Psychology (CEP) Department

5.5 CEUs Have been requested and are pending for Social Work, CEP, and NM Nurses via the NMBON certification of CEU for NM Nurses.

[Click Here to Register](https://shorturl.at/L3NRK)



The Social Buzz



socialwork.nmsu.edu



BE BOLD. Shape the Future.[®]
College of Health, Education
and Social Transformation

Scholarship Information AY2025-2026

Applying now to
get first
consideration!
Don't wait!



Scholar
Dollar\$



Apply Today!

New Mexico State University's College of HEST would like to remind you that the online application for scholarships is **available now**.

APPLY TODAY FOR SCHOLARSHIP ELIGIBILITY!



TO APPLY FOR SCHOLARSHIPS visit
scholarships.nmsu.edu

APPLY TODAY

***Priority deadline is March 1st, 2025.** Applicants who submit their applications before this date will be given first consideration.

**QUESTIONS? CONTACT FINANCIAL AID &
SCHOLARSHIP OFFICE!**

NO APPOINTMENT NECESSARY!

College of HEST Scholarship Coordinator:
Sapphira Garner, email: HEST@nmsu.edu



The Social Buzz



socialwork.nmsu.edu



LUNCH & LEARN

Panel Discussion

Interesting!
Added to my
calendar!

Navigating Professional Wellness in a High-Stress Profession



11/22/24 12:00 PM - 1:30 PM



ZOOM ID: 828 3203 4154

Discussion Topic

Join a panel of experienced social work professionals as they share valuable insights and strategies for prioritizing self-care and wellness throughout your social work career. This session will provide practical advice on navigating the complexities of working with diverse client systems, managing organizational cultures, and overcoming common challenges in the profession. Panelists will discuss building resilience and developing wellness habits early on, even when working with vulnerable populations or facing the pressures of an often underappreciated field. Open to all social work students, this session offers essential guidance for a successful and sustainable career.

MARIANNE HERNANDEZ-
JIMENEZ, LMSW

Southern Associate Deputy
Director of Investigations, CYFD

LISA CHAVEZ, LCSW

Senior Director of Programs &
Services, FYI+

AMANDA MCDOWELL,
LCSW

Coordinator of Behavioral Health
& Academic Counseling
Education Equity & Support
Program, LCPS



Child Welfare Scholar Program
School of Social Work
BE BOLD. Shape the Future.*
New Mexico State University

Contact Us :

+575-646-5711



The Social Buzz



socialwork.nmsu.edu



Connecting Social Workers with Purposeful Careers, Inside and Outside NMSU

Exciting News for Our Social Work Community! We've launched a new Careers & Opportunities webpage dedicated to connecting you with meaningful job openings. From roles within NMSU to opportunities in the broader community, this page is designed to help you find positions that align with your passion and expertise. Visit the page to explore the latest listings and take the next step in your career!

Nice! Need to
update my
resume! Make
appointment
with Peer
Support! ✓





Homecoming is just around the corner, and this year's celebration is packed with can't-miss events! Get your tickets before they're gone! Here's what's in store:

- Friday, November 8 – Dress your best for the 2024 Distinguished Alumni Awards Dinner, where we'll honor some of our most accomplished alumni.
- Saturday, November 9 – Kick off your day with the Aggie Class Reunion (classes of 1974 & 1999), then don your crimson and white Aggie swag for the festive Homecoming Parade!
- Saturday, November 9 – Ropers and your best bolo will have you looking smart at NMSU Ag Day, then pop over to the Alumni & Friends Tailgate to mingle with your fellow Aggies.
- Saturday, November 9 – Come shake your cowbells at the Homecoming football game as we cheer on the Aggies vs. Western Kentucky, capped off by a fireworks show presented by the NMSU Foundation!

•
Check our [website](https://socialwork.nmsu.edu) for all the events during Homecoming weekend.

Let's make this year one to remember — welcome home, Aggies!



EVENTS TO KEEP IN MIND

**In person
event! Yes
please**

DEMYSTIFYING DECOLONIAL RESEARCH



Manal Hamzeh, Ph.D.
Borderlands and Ethnic Studies
Director of BEST Research Center
manahamz@nmsu.edu



November 12th
11 AM - 12 PM
300 O'Donnell Hall
Join via zoom:
<https://nmsu.zoom.us/j/88585880786>

Join us for an introductory
conversation on decolonial:

- Foundational concepts
- Methodologies
- Platforms for dissemination/publication

Scan here for readings:



The Social Buzz



socialwork.nmsu.edu

EVENTS TO KEEP IN MIND



Kimberly Warmasley, MSW, LCSW



Victor Manalo, PhD, MSW



Karen Canaday, MSW

I'm ready for
my voice to
be heard!
Registration,
done ✓

SANA EVENT: LEGISLATIVE ADVOCACY & RUNNING FOR OFFICE AS A SOCIAL WORKER

Lunch & Learn on **November 20** (Wednesday)
from **12 pm–1 pm MT**. [This event will be
recorded.]

Hear from panelists about their policy experience,
student legislative advocacy, social work legislation and
social workers running for and holding political office.

Panelists: Karen Canaday, MSW • Local Behavioral
Health Collaborative Coordinator, State of New Mexico
Behavioral Health Services Division

Victor Manalo, PhD, MSW • Political Social Worker
and Faculty at California State University,
Los Angeles

Kimberly Warmasley, MSW, LCSW •
Executive Director, National Association of
Social Workers California Chapter
(NASW-CA) & Interim Executive Director,
NASW-NM

Register for this *Free Event*
at: <https://bit.ly/Nov-SANA>



GET READY

NMHPVSSW CENTER FOR
EXCELLENCE IN SOCIAL WORK

SANA
STUDENT ADVOCACY & ACTION

SANA DAY 2025



LEGISLATIVE CALENDAR

The next Interim Legislative Health &
Human Services Committee Meeting is
November 19–22 in Santa Fe.

The NM Regular Session, 57th Legislature is
January 21–March 22, 2025.

Attend in-person or watch online at
nmlegis.gov.



The Social Buzz



socialwork.nmsu.edu

STAY CONNECTED



Crimson Connection!

Looking for ways to engage with the NMSU community? Whether you're on campus or online, Crimson Connection has all the latest events happening at the university. From workshops and webinars to social gatherings and special lectures, there's something for everyone.

Click the link below to explore upcoming events and join in on the action!

[Explore Events on Crimson Connection](#)

Stay Connected with Us on Social Media!

Don't miss out on the latest updates, events, and news from the School of Social Work! Be sure to follow us on [Facebook](#) and [Instagram](#) for important announcements and opportunities.

Also, keep an eye on our bulletin boards located in the Health and Social Services building and O'Donnell Hall for upcoming events and other news.

Stay informed and stay connected!



BUZZ IN NEXT WEEK

Stay tuned for the latest updates, stories, and highlights from the School of Social Work!

In next week's edition, we'll bring you:

- Spotlights on Recent Achievements
- Upcoming Events and Workshops
- Student and Faculty Features
- Useful Resources and Tips

Got something to share or a question to ask?

Feel free to reach out to us:

✉ mkeeper@nmsu.edu

☎ Phone: 575-646-7599

🏢 Office: HSS 210F

We'd love to hear from you and feature your news in our next issue!



The Social Buzz



socialwork.nmsu.edu