



# The Social Buzz



## School of Social Work

**October 3- October 9, 2024**

### MESSAGE FROM THE DIRECTOR

Hello! It's hard to believe we are already half-way through the semester. Some of you are even finishing your first mini-mester next week! I hope things are going well. Please reach out to your faculty, academic advisor, Devin Fields, or faculty advisor if you need any support along the way.



We have a lot of resources and are committed to helping you succeed. We also hope you will help us succeed by filling out course evaluations so we can continue to offer a great social work program! You'll see announcements for student town halls (in-person and virtual) in November. This is a chance for us to share some of the data we collect on our program and for you to offer feedback for improvements. And of course, you are always welcome to share your input with me at any time. Here's to a great second half and (hopefully?) a bit cooler weather.



*Mary Nienow*

Dr. Mary Nienow, Director



**The Social Buzz**



[socialwork.nmsu.edu](http://socialwork.nmsu.edu)

## ABOUT



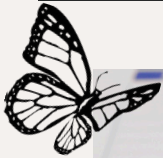
The Social Buzz newsletter serves as a key communication tool, keeping students, faculty, and alumni informed about the school news, events, and achievements. It fosters a sense of community, provides educational content, and supports professional development by sharing resources, job opportunities, and updates on social work practice. Additionally, the newsletter promotes school's programs, enhances recruitment efforts, and advocated for social justice issues, thereby connecting and engaging the broader social work community.

## COME OUT AND SUPPORT OUR STUDENTS

# **BSSWA AGUA FRESCA SALE OCTOBER 7TH ON I-MALL BY SPEECH BUILDING FROM 12-3PM**



## IMPORTANT REMINDER



The Spring Schedule is now out! Reach out and chat with Devin to make sure you are ready for registration.

Schedule with Navigate  
Schedule with Calendly.



**Devin Fields**  
Academic Advisor  
School of Social Work  
HSS Suite 210  
Fieldsd@nmsu.edu



The Social Buzz



socialwork.nmsu.edu



## Resources and Opportunities



THE CENTER ON  
IMMIGRATION  
AND CHILD WELFARE



BE BOLD. Shape the Future.<sup>®</sup>  
School of Social Work



### Inclusive, Trauma-Informed Practices with Immigrants

A Training Series for Community Practitioners and Organizations

#### About the training

This self-paced online training explores how service organizations and practitioners can implement policies and practices to increase inclusivity of immigrant families, and how trauma-informed practice can be tailored to address the unique experiences of immigrant families. It also includes discussion of a model for implementing immigrant specialist navigators within organizations.

**Six free cultural social work CEUs are available from the NMSU School of Social Work.**

#### Who is it for?

This training is for leaders and frontline practitioners in organizations serving immigrant families across a variety of community settings.

#### Modules

1. Migration & Trauma
2. Historical & Political Contexts
3. Trauma-Informed Practices & Interventions with Immigrants
4. Immigrant-Inclusive Organizational Policies & Practices
5. Secondary Trauma among Practitioners Working with Immigrant Populations

**ENROLL NOW!**



For more details visit: <https://cimmcw.org/immigrant-inclusivity-training>.

This training was developed with funding from the W.K. Kellogg Foundation.



The Social Buzz



socialwork.nmsu.edu





## Resources and Opportunities

We're pleased to share valuable resources from Intelligent.com, a student-focused publication dedicated to supporting academic success. These guides offer practical tips on study planning, stress management, note-taking, and exam strategies—perfect tools to help you navigate your educational journey:

- **Creating an Effective Study Plan**
- **Studying Smart Before Exams**
- **Taking Effective Notes**
- **Managing Stress**
- **Utilizing Test-Taking Strategies**

Check them out to strengthen your study habits and reduce stress this semester!





**BE BOLD. Shape the Future.®**  
**New Mexico State University**  
**Child Welfare Scholar Program**  
School of Social Work

# Lunch & Learn Workshop

This one-hour presentation provides an in-depth look at the daily responsibilities, challenges, and rewards of a child welfare worker, from a practitioner's perspective. Through real-life scenarios and experiences, participants will gain an understanding of how child welfare professionals advocate for the safety and well-being of children and families. Tailored for all students considering a career in child welfare, this session highlights the essential skills, resilience, and compassion required to make a meaningful impact in this critical field.



18 October 2024



At 12:00pm-1:00pm



**Zoom  
Meeting ID**

**816 2537 1515**

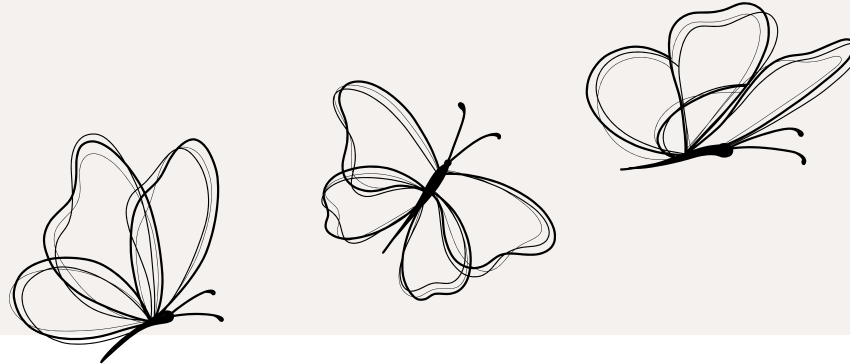


Our Phone  
**+575-646-5711**



Erica Tontodonati  
**ericat@nmsu.edu**





# 2-Day Licensing Exam Preparation Seminar

NOVEMBER 08 & 09 | 9 AM - 4 PM

Facilitators will help participants understand the exam dynamics and demonstrate how to effectively use strategies for selecting and using the information provided within each exam item to choose the most appropriate choice to increase their success with the exam.



**\$50 Students**  
**\$75 Non-Students**  
Email us to explore scholarship opportunities!  
**Scholars attend free of charge, first come first serve to all non-scholars.**

**SIGN UP NOW**

Link in Our Bio







Pinnacle | A magazine from the College of Health, Education and Social Transformation

Vol. 3 | Fall 2024

# FEELING the burn

Research delves into effects of exercise in hot climates

From the latest in artificial intelligence to how the body reacts to hot environments, learn more about what's going on in the College of Health, Education and Social Transformation by picking up the latest issue of Pinnacle. The fall 2024 issue also contains stories on initiatives that unite the community, as well as inspiring alumni and faculty accolades.

[Click here to read the online version or stop by the dean's office to pick up some hard copies to enjoy!](#)

## NMSU Career Closet

This "closet" provides professional dress clothing to NMSU students at no cost thanks to generous donations. The NMSU Career Closet provides professional dress clothing for interviews, job fairs and any other event to make a positive first impression. Students do not have to return the clothing and there are no limits on the amount of clothing students can take per semester.

There are two locations. 1) Campus Tutoring Center: CCSU Room 206, Monday - Friday 8 am - 8 pm, 2) Gerald Thomas Room 295 Monday - Friday 8 am - 5 pm.





## Help recognize excellence at NMSU

Do you know an extraordinary NMSU employee who goes above and beyond in their work? Now's your chance to recognize them. Nominations are open for the Stephen W. and Robert E. Roberts Memorial Staff Award, honoring a non-exempt employee who embodies dedication and excellence at NMSU.

Every day, employees make a difference and inspire those around them. If you know someone who exemplifies these qualities, nominate them for this prestigious award. The recipient will receive a cash award for their outstanding contributions.

To nominate, visit the Employee Council Roberts Memorial Staff Award [page](#) for details, including eligibility and the nomination form.

Submit by Oct. 11 to [trainingcentral@nmsu.edu](mailto:trainingcentral@nmsu.edu) with "**Roberts Award – Attn: CLPD Team**" in the subject line. For questions, contact CLPD at [trainingcentral@nmsu.edu](mailto:trainingcentral@nmsu.edu) or 575-646-7444. Let's honor those who make NMSU great.





## NMSU first-gen nominations sought for spotlights

NMSU first-gen nominations sought for spotlights  
Nov. 8 marks the 59th anniversary of the Higher Education Act, and institutions around the country will celebrate the presence and experiences of first-generation college students, faculty and staff at their campuses.

NMSU's sixth annual First-Generation Celebration will again spotlight its system-wide, first-generation college students, graduates, faculty and staff via NMSU's Hotline and social media. If you are one of NMSU's first-generation celebrities or know of someone who is, we want to share your story to recognize you and inspire others. Self-nominate or nominate someone else by completing the [form](#). Send us your ideas on how to celebrate first-generation students via [NMSUFirstGen@nmsu.edu](mailto:NMSUFirstGen@nmsu.edu). For more information, contact Eli Valdez at 575-646-4755 or [evaldez1@nmsu.edu](mailto:evaldez1@nmsu.edu).







Thursday, October 10, 2024 at 4:00 p.m.

Early Career to Retirement Readiness Presentation

NMSU CORBETT CENTER STUDENT UNION  
AUDITORIUM - 2ND FLOOR  
2795 S LOCUST ST, LAS CRUCES, NM 88003

New Mexico Educational Retirement Board will be presenting our Early Career to Retirement Readiness presentation for all members on Thursday, October 10th, 2024.

New Mexico State University will be hosting, and all surrounding areas are invited and encouraged to attend.

≡ Cheers to ≡

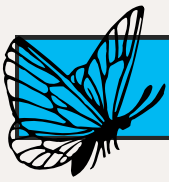
RETIREMENT!



The Social Buzz



[socialwork.nmsu.edu](http://socialwork.nmsu.edu)



## ☀️ **TimelyCare Services Now Available!** ☀️

TimelyCare services are offered at no cost to benefit-eligible employees and students at NMSU. Whether you're an enrolled main-campus or global NMSU student, you can take advantage of these convenient health services!

### **How to Access TimelyCare:**

- Visit [timelycare.com/nmsu](https://timelycare.com/nmsu) directly.
- Alternatively, download the TimelyCare app from the app store.
- Register using your NMSU email address.

Once registered, you can start visits from any web-enabled device—smartphone, tablet, laptop, or desktop—anywhere in the United States!

### **Services Offered:**

- MedicalNow: 24/7, on-demand medical care.
- TalkNow: 24/7, on-demand emotional support.
- Scheduled Counseling: Choose the day, time, and mental health provider of your choice (12 visits per year).
- Scheduled Medical: Select the day, time, and medical provider of your choice.
- Health Coaching: Support for developing healthy behaviors.
- Psychiatry: Advanced mental health care available upon referral.
- Basic Needs Support: Connect with free or reduced-cost community resources.
- Self-Care Content: 24/7 access to self-care tools and resources, including meditation and yoga sessions, helpful videos, and expert articles.

### **Take Charge of Your Health!**

Don't miss out on these valuable resources. Access TimelyCare today and prioritize your well-being!





## EVENTS TO KEEP IN MIND



*Aggie Manners*  
*Business Etiquette Dinner*

*Thursday, October 24th 2024*

**Stan Fulton Center**  
Mocktail Hour begins at 5:30 pm  
Dinner promptly begins at 6:00 pm

\$45 Fee includes:  
Hors d' oeuvres, 5 course meal and Business Etiquette Course

*Business Professional Attire Required*

**Registration is required**  
Register & pay on Handshake  
Deadline is October 4th, 2024

*For more information, please contact [oel@nmsu.edu](mailto:oel@nmsu.edu).*



This fun and informative event will teach you how to navigate formal business dining and cocktail hour settings. Whether you're attending a professional dinner or a networking event, you'll gain essential skills to help you shine in any situation.

Dr. Janet Green will be our expert guide, educating you on:

- Proper utensil settings
- Drink placement
- Passing condiments
- Meal etiquette
- And much more!



Event Details: Thursday, October 24, 2024

5:30 pm Mocktail Hour

6:00 pm Dinner

Stan Fulton Center, Villanueva Victory Club

Deadline to register is October 4, 2024!

Dress Code:

Business professional attire is required for this event. For tips on what to wear, please watch this helpful video: [Professional Attire Video](#).



**The Social Buzz**



[socialwork.nmsu.edu](http://socialwork.nmsu.edu)



# EVENTS TO KEEP IN MIND



SCREENING IN PARTNERSHIP WITH LCSPTF, LUNA COUNTY & STARMAX THEATER



"This film is changing lives!"

Heather McLean, Mental Health America, SWPA

**Thursday October 3rd, 2024 at 5:30PM**

A suicide attempt left 16-year-old varsity cheerleader, Emma Benoit, paralyzed, but propelled her on a mission to use her painful experience to help others find hope, and shine more light on the fact that 20 young people die every day by suicide in the United States.

Let's come together to support suicide prevention through the amazing story of adolescent suicide attempt survivor, Emma Benoit. Your attendance for this special screening makes a difference.

**Where:**

**STARMAX Theater**  
333 N Country Club Rd,  
Deming, NM 88030



## Our Screening Partners:



## OUR PARTNERS



## LC3'S VISION

To build a behavioral health system that is inclusive, organized, centered on the individual and family, and is committed to advocating for and providing comprehensive mental health and substance use disorder services for people across Doña Ana County, New Mexico.



**CONTACT INFO:**  
**JAVIER GUERRERO**  
IC, PHM, MS  
ICS COMMUNITY COORDINATOR, FYI+



**EMAIL: JGUERRERO@FYINM.ORG**



**OFFICE: 575-202-6987**



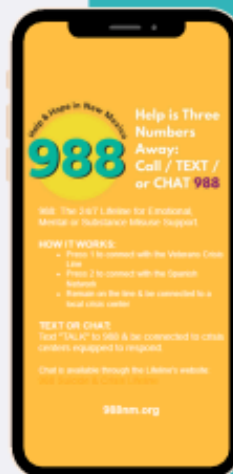
**CONTACT INFO:**  
**AMANDA VEGA**  
DNL, PHM, MSW  
ICS COMMUNITY COORDINATOR, FYI+



**EMAIL: AVEGA@FYINM.ORG**



**OFFICE: 575-319-0978**



DEMING + LC3



The Social Buzz



socialwork.nmsu.edu



# 2ND ANNUAL LAS CRUCES PRIDE PARADE

Saturday, October 5, 2024

## PARTICIPATE OR VOLUNTEER AT THIS YEAR'S PRIDE PARADE

FOLLOW THESE  
LINKS TO SIGN UP



Participant  
Application



Volunteer  
Application



The Social Buzz



socialwork.nmsu.edu





2024-2025 Social Justice Teach-in Series  
Center for Excellence in Social Work (Center)  
Facundo Valdez School of Social Work (FVSSW)  
New Mexico Highlands University (NMHU)

# RACIAL JUSTICE: BLACK SOCIAL WORK HISTORY, RACISM AND OPPRESSION IN SOCIAL WORK

*A Social Justice Teach-in  
with Facilitator and Center  
GA, Isabella Serrano*



**Christian Adeleke, LMSW**  
PhD Student,  
University of  
Texas at  
Arlington School  
of Social Work



**Justin S. Harty,  
PhD, MSW,  
LCSW**  
Assistant  
Professor of  
Social Work,  
Arizona State  
University School  
of Social Work



**Kathy Lopes,  
LICSW**  
Vice President  
National  
Association of  
Black Social  
Workers  
(NABSW)

Wednesday, October 9, 2024 via Zoom  
6 pm–7:30 pm Mountain Time  
(8 pm ET / 7 pm CT / 6 pm MT / 5 pm PT)  
**\*THIS EVENT WILL BE RECORDED\***

Join the Center for Excellence in Social Work (Center) for a conversation about self-determination, mutual aid, Black social work history, Black social work leaders, and the maintaining of White supremacy within the social work profession and social work education.



**REGISTER AT:**

[bit.ly/SJ-Teach-in-Oct](https://bit.ly/SJ-Teach-in-Oct)



**1.5 CEUS CULTURAL  
AVAILABLE BY REQUEST  
FOR PARTICIPANTS**

Questions: please contact  
[ceswnm@nmhu.edu](mailto:ceswnm@nmhu.edu) or  
for CEU specific questions,  
[socialworkceu@nmhu.edu](mailto:socialworkceu@nmhu.edu)



**The Social Buzz**



[socialwork.nmsu.edu](https://socialwork.nmsu.edu)





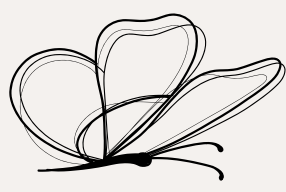
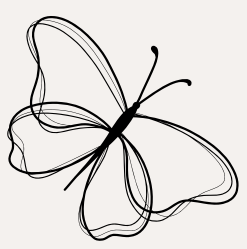
# SACNAS

## Weeklies

**Thursdays** at 2:30-3:30  
PM  
Garcia 144

Join the NMSU Society for the Advancement of Chicanos, Hispanics, and Native Americans in Science this semester. We'll build community and share resources that support our scientific pathways.

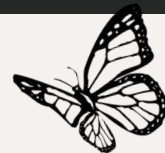
All NMSU students are invited!



The Social Buzz



socialwork.nmsu.edu



NMSU Latin American & LGBT+ Programs present  
Latinx Heritage Month & **OUTober** Crossover 2024

# JOTXS Y RECUERDOS: LIVE PODCAST



**Corbett Ballrooms**  
**Tuesday, October 8**  
**12:00 - 1:30 PM**

**RSVP** to [cgamex@nmsu.edu](mailto:cgamex@nmsu.edu)  
by Sept. 27th to have lunch  
during the event!



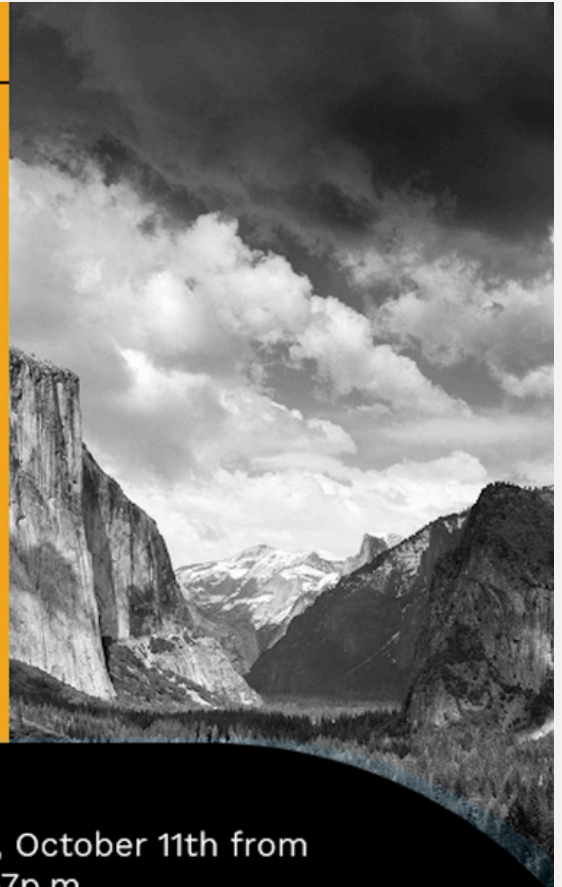
**All Aggies are Welcome!**





# Clyde Butcher: Lifeworks in Photography

Experience art in motion featuring Clyde Butcher's: Lifeworks in Photography presented by the Las Cruces Museum of Art and live performance by the NMSU Dance Program.



Friday, October 11th from  
5p.m.-7p.m.

Las Cruces Museum of Art  
491 N Main Street  
Las Cruces, NM 88001

Inspired by the black and white  
photography of Clyde Butcher, join the NMSU  
Dance  
Program as they present *Trekking: Life in  
Motion*.

Admission is FREE!

Black and White Photography by Clyde Butcher: Yosemite 175

P. 575-528-3500  
P. 575-541-2137

<https://lascruces.gov/arts-and-leisure/museums/museum-of-art/>



The Social Buzz



[socialwork.nmsu.edu](http://socialwork.nmsu.edu)





# BLACK PROGRAMS OCTOBER 2024 EVENTS



**01**  
TUE

**Nigerian Independence Day-Culture Connect**  
12:00PM - 2:00 PM  
**Black Programs Student Lounge**



**10**  
THUR

**Office of Equity, Inclusion, & Diversity Open House**  
4:30PM - 7:30 PM  
**Black Programs Office**



**15**  
TUE

**Movie Showing of Challenges with LGBT+ Programs**  
7:00PM - 9:00PM  
**Milton Center Theater - NMSU**

**16**  
WED

**NMSU Community Meet & Greet-Dr. Darryl Holloman -  
Discovering James Baldwin**  
2:00 PM- 3:30 PM  
**Location: TBD**



**17**  
THUR

**Discovering James Baldwin Connection - Dr. Darryl  
Holloman**  
6:00PM - 7:30PM  
**Location: TBD**

**19**  
SAT

**Movie Showing of Good Trouble & Discussion**  
1:00PM - 5:00PM  
**Branigan Library - City of Las Cruces**



**The Social Buzz**



[socialwork.nmsu.edu](http://socialwork.nmsu.edu)





# New Mexico Breastfeeding Task Force

## Register today!

We are excited to invite you to an important professional development event focusing on Lactation & Interpersonal/Intimate Partner Violence, taking place in Grants, NM on October 25th from 1pm to 5pm.

This workshop is designed for social workers, community health workers, lactation consultants, lactation counselors, and any other providers and community members who are committed to enhancing their skills and making a meaningful impact in their communities. By participating, you'll have the opportunity to:

- For Social Workers and Community Health Workers - Earn Continuing Education Units (CEUs) to advance your professional development.
- Gain valuable insights and practical strategies to support clients dealing with lactation challenges and interpersonal violence.
- Engage with experts and network with peers in a collaborative learning environment.

**New Mexico Breastfeeding Task Force**

**NMDOH**  
NEW MEXICO DEPARTMENT OF HEALTH

### LACTATION & INTERPERSONAL/INTIMATE PARTNER VIOLENCE TRAINING

**OCTOBER 25**  
1-5PM  
CIBOLA GENERALHOSPITAL  
1016 ROOSEVELT AVE  
GRANTS, NM 87020

**4 CE HOURS FOR SOCIAL WORKERS**  
APPROVED BY NASW-NM

**4 CE HOURS FOR CERTIFIED COMMUNITY HEALTH WORKERS**  
APPROVED BY NMDOH OFFICE OF COMMUNITY HEALTH WORKERS

TRAINING MADE POSSIBLE IN PARTNERSHIP WITH NM DOH OFFICE OF INJURY & VIOLENCE PREVENTION

## Registration is required to secure your spot!

[Please click here to register.](#)

Don't miss out on this opportunity to further your professional growth and contribute to the well-being of your community. We look forward to seeing you there!



**The Social Buzz**



[socialwork.nmsu.edu](http://socialwork.nmsu.edu)



## Welcome home events!

<p><b>NOV 8</b> FRIDAY</p>	<p><b>Distinguished Alumni Awards</b> On the NMSU Horseshoe lawn (Horseshoe Street and Espina Street) 5 p.m. - Cocktail Reception 6:30 p.m. - Dinner and Awards</p>
<p><b>NOV 9</b> SATURDAY</p>	<p><b>Aggie Reunion - Classes of '74 &amp; '99</b> North patio of the NMSU Art Museum at Devasthali Hall 8:30 to 11 a.m.</p>
<p><b>NOV 9</b> SATURDAY</p>	<p><b>Homecoming Parade</b> Starts at Pan Am Center and proceeds down University Avenue 10 a.m.</p>
<p><b>NOV 9</b> SATURDAY</p>	<p><b>Homecoming Tailgate with Alumni and Friends</b> North of Aggie Memorial Stadium in Pan Am Center parking lot 1 to 4 p.m.</p>
<p><b>NOV 9</b> SATURDAY</p>	<p><b>Homecoming Game - NMSU vs. Western Kentucky</b> Aggie Memorial Stadium 4 p.m.</p>
<p><b>NOV 9</b> SATURDAY</p>	<p><b>Fireworks Show</b> Fireworks show sponsored by the NMSU Foundation will launch from Sisbarro Park After the Homecoming game</p>

For tickets and info visit: [nmsualumni.org/homecoming](https://nmsualumni.org/homecoming)



The Social Buzz



socialwork.nmsu.edu



# 100 West Café



Come support HRTM's student-run 100 West Café as we launch our semester-long lunch series from 11 a.m. to 1 p.m. in Gerald Thomas Hall. The menu includes:

**Appetizers:**

Salad: \$5

Tomato soup with grilled cheese croutons: \$6

Avocado bagel: \$6

**Entrees:**

Steak and chimichurri sandwich with choice of side: \$13

Garden macaroni and cheese: \$8

Spice-crusted and smoked pork loin with choice of side: \$13

**Desserts:**

Apple pie cupcake with caramel buttercream: \$3

Waffle with peach compote and mascarpone-whipped cream: \$6

Menu will remain all semester long, with all new weekly specials. All items may be ordered for dine-in or carryout. There is a \$2 service charge on all carryout orders.

Call 575-646-5805 the morning of service between 9 and 11 a.m. to place a takeout order. Reservations required for parties of eight or more. Please email Danielle Young at [danielly@nmsu.edu](mailto:danielly@nmsu.edu) or call at 575-646-8099 to inquire.



**Dates**

- September 27
- October 4
- October 11
- October 18
- October 25
- November 1
- November 8
- November 15
- November 22
- December 6

*\*No service for Thanksgiving Holiday\**



**The Social Buzz**



[socialwork.nmsu.edu](http://socialwork.nmsu.edu)

## STAY CONNECTED



### Crimson Connection!

Looking for ways to engage with the NMSU community? Whether you're on campus or online, Crimson Connection has all the latest events happening at the university. From workshops and webinars to social gatherings and special lectures, there's something for everyone.

Click the link below to explore upcoming events and join in on the action!

[Explore Events on Crimson Connection](#)

### Stay Connected with Us on Social Media!

Don't miss out on the latest updates, events, and news from the School of Social Work! Be sure to follow us on [Facebook](#) and [Instagram](#) for important announcements and opportunities.

Also, keep an eye on our bulletin boards located in the Health and Social Services building and O'Donnell Hall for upcoming events and other news.

Stay informed and stay connected!



## BUZZ IN NEXT WEEK

Stay tuned for the latest updates, stories, and highlights from the School of Social Work!

In next week's edition, we'll bring you:

- Spotlights on Recent Achievements
- Upcoming Events and Workshops
- Student and Faculty Features
- Useful Resources and Tips

Got something to share or a question to ask?

Feel free to reach out to us:

✉ [mkeeper@nmsu.edu](mailto:mkeeper@nmsu.edu)

☎ Phone: 575-646-7599

🏢 Office: HSS 210F

We'd love to hear from you and feature your news in our next issue!



**The Social Buzz**



[socialwork.nmsu.edu](http://socialwork.nmsu.edu)