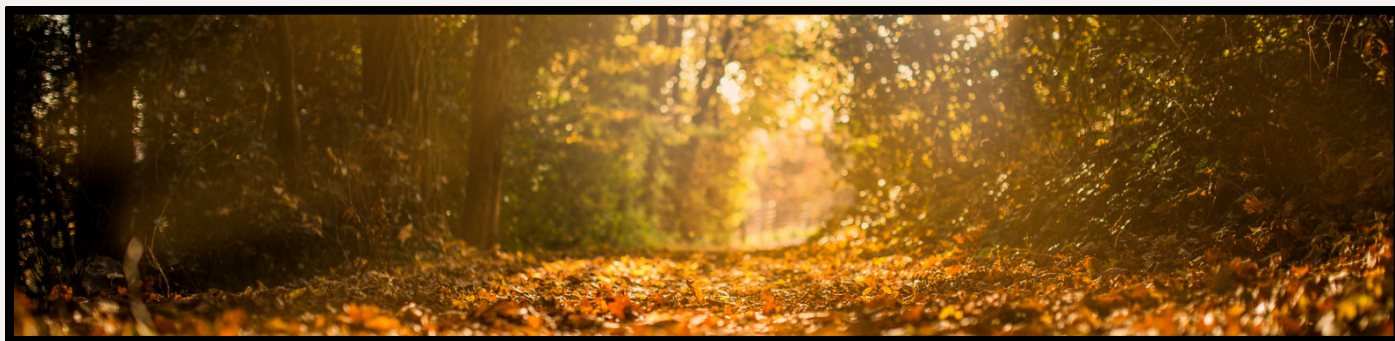


# The Social Buzz

## School of Social Work

October 17- October 23, 2024

### MESSAGE FROM THE DIRECTOR



It seems the air is finally cooling. I hope you all take advantage to spend more time outdoors enjoying the weather and beautiful time of year in Las Cruces. Yesterday we hosted Kristen Daugherty as our distinguished alumni. Kristi's story was so inspiring and reminded me of how much potential each of our students have to make a real difference in the lives of individuals, families, and communities.

On Thursday I'm hoping to attend the NMSU's Asian Pacific Islander Program hosts a celebration for Filipino American History Month from noon-1:30 p.m. in the Corbett Ballrooms. While not indigenous to the Philippines, my family spent many generations living there and I have grown up with a profound appreciation for the country and its history. I hope to see you there!

Have a great week and continue to be your amazing self.



Dr. Mary Nienow, Director



The Social Buzz



[socialwork.nmsu.edu](https://socialwork.nmsu.edu)



it's okay to take a break



CAN'T MEET US IN-OFFICE? SCHEDULE AN APPOINTMENT WITH US!

# STRESS BUSTER



Take a Break  
Before  
Midterms!  
Snacks,  
Stress Relief  
& Time  
Management  
Tips



**OCTOBER 22**

**TIME 9AM-12PM**

**LOCATION 214 HSS**

PEER SUPPORT IS HERE NOT ONLY TO HELP YOU PREP FOR MIDTERMS BUT TO SUPPORT YOU THROUGH YOUR ACADEMIC JOURNEY

- FREE SNACKS 🍪🍏
- STRESS RELIEF ACTIVITIES 🧘
- TIME MANAGEMENT HANDOUTS 📝🕒
- FRIENDLY FACES & SUPPORT



**The Social Buzz**



[socialwork.nmsu.edu](https://socialwork.nmsu.edu)





## IMPORTANT REMINDER

Presented by:  
Bachelor's Students of  
Social Work  
Association

# FALL BASKET RAFFLE

\$3 each ticket

PURCHASE YOUR  
TICKET FROM A  
BSSWA MEMBER  
TODAY!

## CHANCE TO WIN

- ONE couples Fall and Halloween themed basket with candles, fuzzy blanket, pumpkin carving kit, and treats.
- ONE individual Fall and Halloween themed basket with candles, fuzzy blanket, pumpkin carving kit, and treats



LIVE DRAWING  
FRIDAY, OCT 18TH @5PM  
ON INSTAGRAM

DO NOT NEED TO BE PRESENT TO WIN



@nmsu\_bsswa

Bachelor's Students of  
Social Work Association



The Social Buzz



socialwork.nmsu.edu

# IMPORTANT REMINDER



Child Welfare Scholar Program  
School of Social Work  
**BE BOLD. Shape the Future.\***  
New Mexico State University



Children, Youth &  
Families Department  
STATE OF NEW MEXICO



**MAURITA ARMIJO**

METRO REGIONAL COACH  
CYFD WORKFORCE DEVELOPMENT  
PERFORMANCE & ACCOUNTABILITY  
DIVISION

## LUNCH & LEARN SPEAKER SERIES



**FRIDAY**

**18 OCTOBER 2024**



**TIME**

**12:00 PM - 1:00 PM**

This one-hour presentation provides an in-depth look at the daily responsibilities, challenges, and rewards of a child welfare worker, from a practitioner's perspective. Through real-life scenarios and experiences, participants will gain an understanding of how child welfare professionals advocate for the safety and well-being of children and families. Tailored for all students considering a career in child welfare, this session highlights the essential skills, resilience, and compassion required to make a meaningful impact in this critical field.

○ ○ ○ ○

**ZOOM  
MEETING ID  
816 2537 1515**

Contact Erica Tontodonati at  
[ericat@nmsu.edu](mailto:ericat@nmsu.edu) or (575)646-5711



**The Social Buzz**



[socialwork.nmsu.edu](https://socialwork.nmsu.edu)





THE CENTER ON  
IMMIGRATION  
AND CHILD WELFARE



BE BOLD. Shape the Future.<sup>®</sup>  
School of Social Work



## Inclusive, Trauma-Informed Practices with Immigrants

A Training Series for Community Practitioners and Organizations

### About the training

This self-paced online training explores how service organizations and practitioners can implement policies and practices to increase inclusivity of immigrant families, and how trauma-informed practice can be tailored to address the unique experiences of immigrant families. It also includes discussion of a model for implementing immigrant specialist navigators within organizations.

**Six free cultural social work CEUs are available from the NMSU School of Social Work.**

### Who is it for?

This training is for leaders and frontline practitioners in organizations serving immigrant families across a variety of community settings.

### Modules

1. Migration & Trauma
2. Historical & Political Contexts
3. Trauma-Informed Practices & Interventions with Immigrants
4. Immigrant-Inclusive Organizational Policies & Practices
5. Secondary Trauma among Practitioners Working with Immigrant Populations

**ENROLL  
NOW!**



For more details visit: <https://cimmcw.org/immigrant-inclusivity-training>.

This training was developed with funding from the W.K. Kellogg Foundation.

## [Click Here to Enroll NOW!](#)



**The Social Buzz**



[socialwork.nmsu.edu](https://socialwork.nmsu.edu)



**BE BOLD. Shape the Future.\***  
College of Health, Education  
and Social Transformation

# Scholarship Information AY2025-2026



Scholar  
Dollar\$



## Apply Today!

New Mexico State University's College of HEST would like to remind you that the online application for scholarships is **available now**.

**APPLY TODAY FOR SCHOLARSHIP ELIGIBILITY!**



TO APPLY FOR SCHOLARSHIPS visit  
[scholarships.nmsu.edu](https://scholarships.nmsu.edu)

**APPLY TODAY**

**\*Priority deadline is March 1st, 2025.** Applicants who submit their applications before this date will be given first consideration.

**QUESTIONS? CONTACT FINANCIAL AID &  
SCHOLARSHIP OFFICE!**

**NO APPOINTMENT NECESSARY!**

College of HEST Scholarship Coordinator:  
Sapphira Garner, email: [HEST@nmsu.edu](mailto:HEST@nmsu.edu)



**The Social Buzz**



[socialwork.nmsu.edu](https://socialwork.nmsu.edu)





## Resources and Opportunities

# Redes Graduate Student Alliance



Wednesday, Oct 16  
4:00 pm  
Garcia Center 144



**STUDY SESSION,  
Quesadillas will be  
provided**



**All Aggies welcome!**



Join us for **"Financing Your Graduate Degree"** in-person or through ZOOM.

This workshop will discuss ways to explore and pay for graduate school. Students will learn about viable funding sources and other options for financing their graduate education.

**DATE: Wednesday, October 30, 2024**

**TIME: 5:30 pm – 6:30 pm**

**LOCATION: Hardman Jacobs ULC, Room 126 or through ZOOM (Meeting ID: 841 3330 2030).**

Food and Drinks will be provided. Please RSVP at <https://forms.office.com/r/P0XLEPa891> if you will be attending in person.



**The Social Buzz**



[socialwork.nmsu.edu](https://socialwork.nmsu.edu)





## Resources and Opportunities

### Digital Education Workshop

Oct. 22, Oct. 29 | 5 to 6:30 p.m. | Hardman and Jacobs Undergraduate Learning Center, Room 206, and Zoom | Join us for a hands-on Excel Pivot Table Workshop, open to NMSU students, staff/faculty and the community. This workshop will cover the basics of creating and manipulating pivot tables in Microsoft Excel, helping you develop practical data analysis skills. Whether you attend in-person or online, you'll gain valuable insights into using Excel for real-world data analysis. Prior registration is required. Please register in advance. For more information, contact Rajaa Shindi at 575-646-2422 or [rshindi@nmsu.edu](mailto:rshindi@nmsu.edu).

### STEM+ Education and Research Institute Conference

The STEM+ Education and Research Institute at New Mexico State University is pleased to host a unique statewide conference to bring together K-12 and disciplinary-based STEM education researchers and practitioners to share evidence, best practices, and research. The conference will take place from 8 a.m. to 4 p.m. Oct. 30 at the Las Cruces Convention Center, 680 E. University Ave.

Please visit [seri.nmsu.edu](http://seri.nmsu.edu) to register to attend the FREE conference. You will also find information on abstract presentation opportunities. Abstract Deadline Extended through October 15. For more information, contact Diana Sandoval at 575-646-2481 or [dianasan@nmsu.edu](mailto:dianasan@nmsu.edu).



**The Social Buzz**



[socialwork.nmsu.edu](http://socialwork.nmsu.edu)



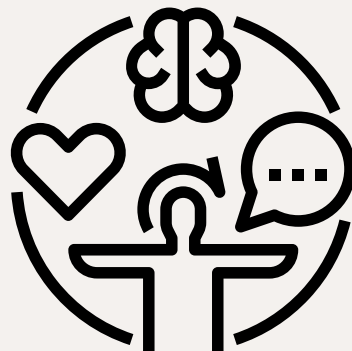




## Career Opportunities

### Southwest Community Behavioral Health Clinician Regional Manager (CYFD/BHS #33283)

Job ID	148585
Posting End Date	12/06/2024
Location	Las Cruces
Full/Part Time	Full-Time
Regular/Temporary	Regular - PERM for State
Agency	Children, Youth & Families Dpt
Job Posting Type	Continuous Job Opening

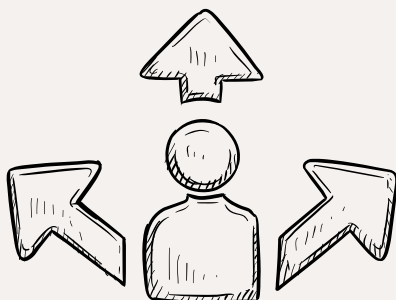


We are so pleased that you are interested in making an impact through our work at CYFD! The department thrives on dedicated, empathetic, and talented employees who ensure the well-being of the children and families in New Mexico by keeping them safe and healthy.

By joining CYFD, you'll work to find the best ways to support families through difficult situations using community-based prevention and intervention programs. Employees have teammates and a committed leadership team to support them every day.

We look forward to you joining us because caring for and supporting New Mexico's children and youth will take all of us. I know the department's mission is critical to improving the overall well-being of children in our state and, in turn, strengthening the future of New Mexico.

For more Job Requirements & Classification Description: [Click Here](#)



[To Apply Click Here](#)



The Social Buzz



[socialwork.nmsu.edu](http://socialwork.nmsu.edu)



The Asian and Pacific Islander Program at New Mexico State University invites all Aggies to come together this fall for a series of events designed to celebrate Asian, Asian American, Arab and Pacific Islander communities on campus.

## Asian Pacific Islander Program's Fall '24 Events

October

17

### Filipino American History Month Celebration

Corbett Ballroom

12-1:30pm



October

21

### Second Annual Asian Horror Film Festival

CMI Theater (Milton Hall 171)

Showtimes: 6pm, 7:45pm



October

23

### Anime and Cosplay Convention part of OUTober X

Corbett Auditorium

7pm



October

29

### Dinner to Discuss Asian American Experiences

\*RSVP Required\*

5pm



November

3

### Roshni 2024

Corbett Ballrooms

5-9pm



The Social Buzz



[socialwork.nmsu.edu](https://socialwork.nmsu.edu)





**OCTOBER**

# indigenous people's day / week

## EVENTS SCHEDULE

**2024**

► AISC (American Indian Student Center) ► CC (Corbett Center) ► NA (Native American)

**MON  
14**

### OPENING CEREMONY

10:00 AM CC - Outdoor Stage

**LUNCH** to follow after Ceremony at AISC

Come start the week with a full stomach to build community.

### NORTHERN SOUTHERN DANCE GROUP PERFORMANCE

12:00 PM, 2:00 PM & 3:00 PM, CC - Outdoor Stage

Come an enjoy and learn about the dance group from Jemez Pueblo.



### UNAO BEAD NIGHT

4:30 - 5:45 PM, AISC, Rm. 112

Come and learn how to bead from our student organization. You also get to take home the product you make.

**TUES  
15**

**WED  
16**

### VISIT WITH NMSU NA FACULTY & STAFF LUNCHEON

11:30 AM - 1:30 PM, AISC

If you have not met our NA NMSU Faculty & Staff, come by and enjoy a lunch on us and mingle. Learn about the roles they serve here at NMSU.

### MOVIE NIGHT: THE EAGLE HUNTRESS

5:30 - 7:30 PM, CMI Theatre, Milton Hall Rm. 171

The Eagle Huntress, is about a Kazakh nomad girl Aisholpan, a 13-year-old nomadic Mongolian girl who is fighting to become the first female eagle hunter in twelve generations of her Kazakh family.



### AIP FOOD FROM HOME DINNER

4:00 - 6:00 PM, AISC

Come enjoy a meal from the Pueblo of Laguna. Missed the feast, well the food is coming to you. If you haven't had food from this community, now is your chance to experience the flavors on our campus.

**THURS  
17**

### MISS NA NMSU LINE DANCE LESSONS

4:00 - 6:00 PM, CC Auditorium

Learn interesting and expressive movements in a friendly environment.



For more information please call 575-646-4207



BE BOLD. Shape the Future.  
Office of the President



**The Social Buzz**



[socialwork.nmsu.edu](http://socialwork.nmsu.edu)



# *Fridays with RRAW*

## **Graduate Women's Support Group**

Are you a woman currently enrolled in a graduate program at NMSU? Are you looking for a space to share experiences with other women in graduate programs?

### *Join us to:*

- Build community and connect with others
- Have a safe space to discuss experiences while in graduate school
- Share and get tips and tricks to survive graduate school
- Relax and have fun!

### *When and where:*

November 1  
November 15  
December 6  
3:00–4:30 pm

Garcia Center  
Room 238

Snacks will be provided :)

For questions:  
[rrowlab@nmsu.edu](mailto:rrowlab@nmsu.edu)



**The Social Buzz**



[socialwork.nmsu.edu](http://socialwork.nmsu.edu)







## Annual Costume Parade

Counseling and Educational Psychology be hosting the children from the School for Young Children along with some kiddos from the Headstart classrooms. Please email [cep@nmsu.edu](mailto:cep@nmsu.edu) if you would like a table for this event.



**The Social Buzz**



[socialwork.nmsu.edu](http://socialwork.nmsu.edu)



# WE ARE LIVE!



# HSIHUB

Knowledge *by* and *for* Hispanic-Serving Institutions

## Culturally Responsive and Relevant Teaching Resources available for STEM Faculty at HSIs:

- **Community Forum** to connect with STEM faculty and ask questions, share resources, and collaborate on innovative ideas!
- Access **a growing STEM Database**, a library of research articles and more - specifically designed to support STEM educators at HSIs.
- **Monthly e-newsletters** that aim to highlight culturally relevant and responsive teaching practices at HSIs.
- Upcoming **webinars and expert-led discussions** providing CRRT resources.



✉ [HSI-Hub@unlv.edu](mailto:HSI-Hub@unlv.edu) 🌐 <https://unlv.my.site.com/hsihub>  [linkedin.com/company/hsi-resource-hub/](https://www.linkedin.com/company/hsi-resource-hub/)



The Social Buzz



[socialwork.nmsu.edu](http://socialwork.nmsu.edu)

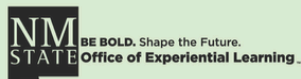
2024

**HEALTH PROFESSIONS  
Career Fair**

**November 12, 2024**

Corbett Center - Aggie Lounge

**2:00 pm - 5:00 pm**



For more information visit  
[oel.nmsu.edu](http://oel.nmsu.edu)  
or call (575) 646-1631

The NMSU Office of Experiential Learning is excited to host the 10th annual Health Professions Fair.

**November 12, 2024**

**2:00 pm - 5:00 pm**

**NMSU Corbett Center, 1st Floor**

Students, alumni and community members will have the opportunity to meet with representatives from hospitals and social service agencies seeking to hire in nursing or other health related professions. These organizations look to engage with Aggies who major in programs from several colleges such as Human Nutrition and Dietetic Science and Family and Consumer Science; Counseling and Educational Psychology, Kinesiology and Special Education and Communication Disorders; and Nursing, Public Health Sciences and **Social Work** to name a few.

Students, alumni, and guests can review the most recent list of employers participating via the Handshake link below. There is no need to pre-register to attend.

Handshake is also accessible on the OEL website at [oel.nmsu.edu](http://oel.nmsu.edu) or  
<https://nmsu.joinhandshake.com/>.

It is recommended that students research potential employers in advance of the career fair, dress professionally and have their resumes reviewed prior to the fair. The Office of Experiential Learning and the Student Success Center offers assistance with resume reviews and interview preparation.

For more information on career preparation, you may contact the Office of Experiential Learning at: [oel@nmsu.edu](mailto:oel@nmsu.edu) or call: 575-646-1631. Students can also schedule an appointment via Handshake.

The Student Success Center can be reached at: [ssc@nmsu.edu](mailto:ssc@nmsu.edu) or call: 575-646-3136.

For more information concerning the fair, contact the NMSU Office of Experiential Learning at 575-646-1631 or [oel@nmsu.edu](mailto:oel@nmsu.edu).

NMSU Health Professions Career Fair 2024 (10th annual)  
November 12, 2024 • 2:00 pm - 5:00 pm MST



**The Social Buzz**



[socialwork.nmsu.edu](http://socialwork.nmsu.edu)



## EVENTS TO KEEP IN MIND



### Gather for fun, family and film at screening of 'Coco'

The NMSU Foundation will host Las Cruces Movie Night Saturday, Oct. 19. Students, faculty and staff are invited to bring their friends, family and neighbors for a night of fun and nostalgia with the entire community.

This free screening takes place at 7:30 p.m. at Pat and Lou Sisbarro Community Park, 3205 Arrowhead Drive. Arrive early to enjoy snacks and drinks from local food trucks, starting at 6 p.m. Bring blankets and folding chairs, but since this is a family-friendly event, please leave alcohol and pets at home.

The evening features the 2017 film "Coco," a magical tale of a young musician named Miguel who embarks on an extraordinary journey to the Land of the Dead, discovering the true meaning of family. Described by critics as "unexpectedly brilliant" and "thoughtful," it is a must-see for all ages.

"Coco" is about cherishing family and chasing dreams — what better way to embrace those values than by experiencing the vibrant community that makes NMSU so special? For more information, contact Nora Hahn at [nora.hahn@nmsufoundation.org](mailto:nora.hahn@nmsufoundation.org) or 575-646-2552, or [click here](#).

# Let's have a skele-ton of fun!

## EMPLOYEE APPRECIATION PICNIC

11 a.m. - 1 p.m. Thursday, Oct. 31, Preciado Park

Pre-carved or  
pre-painted pumpkins  
must be submitted by  
11:30 a.m. for judging.

Halloween  
costume contest  
starts at  
12:30 p.m.



**The Social Buzz**



[socialwork.nmsu.edu](http://socialwork.nmsu.edu)

## STAY CONNECTED



### Crimson Connection!

Looking for ways to engage with the NMSU community? Whether you're on campus or online, Crimson Connection has all the latest events happening at the university. From workshops and webinars to social gatherings and special lectures, there's something for everyone.

Click the link below to explore upcoming events and join in on the action!

[Explore Events on Crimson Connection](#)

### Stay Connected with Us on Social Media!

Don't miss out on the latest updates, events, and news from the School of Social Work! Be sure to follow us on [Facebook](#) and [Instagram](#) for important announcements and opportunities.

Also, keep an eye on our bulletin boards located in the Health and Social Services building and O'Donnell Hall for upcoming events and other news.

Stay informed and stay connected!



## BUZZ IN NEXT WEEK

Stay tuned for the latest updates, stories, and highlights from the School of Social Work!

In next week's edition, we'll bring you:

- Spotlights on Recent Achievements
- Upcoming Events and Workshops
- Student and Faculty Features
- Useful Resources and Tips

Got something to share or a question to ask?

Feel free to reach out to us:

✉ [mkeeper@nmsu.edu](mailto:mkeeper@nmsu.edu)

☎ Phone: 575-646-7599

🏢 Office: HSS 210F

We'd love to hear from you and feature your news in our next issue!



**The Social Buzz**



[socialwork.nmsu.edu](http://socialwork.nmsu.edu)