

# The Social Buzz

## School of Social Work

**November 7- November 13, 2024**

### MESSAGE FROM DIRECTOR

Dear Community,

Today, we may find ourselves experiencing a wide range of emotion, whether you're feeling disappointed, hopeful, uncertain, or somewhere in between. Whatever your response, please know it's valid and worthy of care.

As we all process the news of our country's new leadership, I wish I could offer a quick solution for those grappling with strong emotions. Instead, I offer my support and am here to walk alongside you as we make sense of the world and explore how each of us can contribute to a brighter future for ourselves, our families, and our communities.

A friend shared some "self-care instructions" with me, which I'd like to pass along. I don't know the original source, but I hope they bring some comfort:

Today

Take care of your body and mind.

Drink water.

Eat what feels nourishing.

Step outside and feel the sun on your face.

Get some sleep, or at least rest.

Feel your emotions without turning them on others.

Connect with those who understand.

Share your feelings in good company; navigating the world's complexities is something we shouldn't have to face alone.

There is much work to be done to shape a world that reflects our hopes, and today, we can care for ourselves with gentle compassion so that we and our hearts stay resilient for the work ahead.



Dr. Mary Nienow, Director



**The Social Buzz**



[socialwork.nmsu.edu](http://socialwork.nmsu.edu)

## IMPORTANT REMINDER

**PRESENTED BY BACHELORS  
STUDENTS OF SOCIAL WORK  
ASSOCIATION**

# Coffee, Tea, Cocoa STAND



**FRIDAY NOV 8**

**8:30AM-11AM  
CORBETT  
INTERNATIONAL  
MALL**



**Stop by and  
make a  
difference!**



**The Social Buzz**



[socialwork.nmsu.edu](http://socialwork.nmsu.edu)





Native American Heritage Month Special Event

BE BOLD. Shape the Future.®  
New Mexico State University



Special Guest Speaker, Wilhelmina Yazzie

# "A Right to a Sufficient Education The Yazzie/Martinez vs. NM Education Lawsuit"

Thursday, November 7, 2024



4:30 - 5:00 PM Reception in the Lobby of O'Donnell Hall

5:00 - 6:00 PM Wilhelmina Yazzie

6:00 - 6:15 PM Questions & Answers

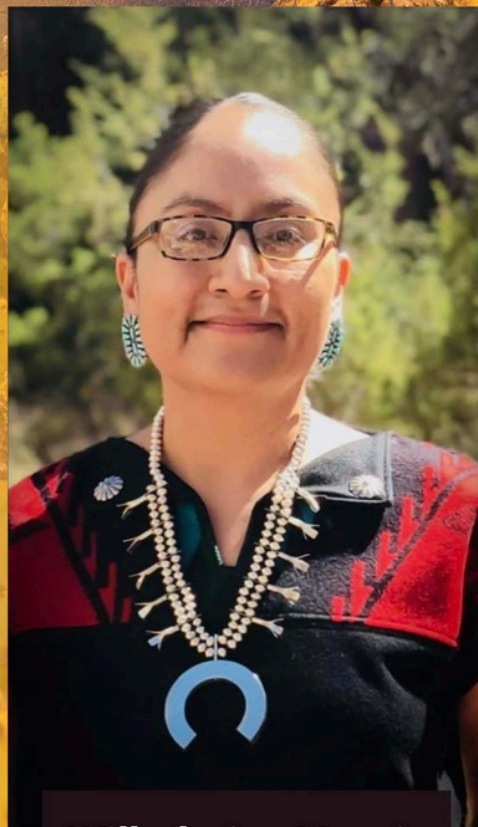
## Location:

111 O'Donnell Hall, in-person  
New Mexico State University

Webinar option, to join ONLINE, [RSVP here](#).

## Special Guest Speaker:

Wilhelmina is a Parent Advocate and is one of the key Plaintiffs in the landmark education lawsuit, *Yazzie/Martinez vs. State of NM*, who sued the state for its failure to uphold its legal obligation to give all students a sufficient education, primarily Native Americans, English Language Learners, low-income and children with disabilities. Like all parents, Wilhelmina wants her children to have a better quality education and an equal opportunity to succeed.



**Wilhelmina Yazzie**

Diné (she/her/Asdzáán)



Sponsored by  
Native American Studies,  
Borderlands and Ethnic Studies, &  
School of Teacher Preparation, Administration, and Leadership

QUESTIONS:

Dr. Georgina Badoni,  
NAS Director and Assistant Professor  
[gbadoni@nmsu.edu](mailto:gbadoni@nmsu.edu)

Dr. Catherine Montoya,  
Assistant Professor, NAS  
[cnm23@nmsu.edu](mailto:cnm23@nmsu.edu)

**BEST.NMSU.EDU**



**The Social Buzz**



[socialwork.nmsu.edu](http://socialwork.nmsu.edu)





## IMPORTANT REMINDER



### BEYOND THE SURFACE: TRAUMA-INFORMED CARE AND MOTIVATIONAL INTERVIEWING



Matthew S. Bennett MA, MBA

#### Event Details

- 8 November, 2024 | At 9:00 am to 4:30 pm**
- NMSU Hardman and Jacobs Undergraduate Learning Center, Room 210
  - Virtual via Zoom (link will be sent to registered participants)
- Register here: <https://shorturl.at/L3NRK>

Scan to Register



#### SPEAKER FACTS

- **Matthew S. Bennett** is an expert in trauma-informed care, helping communities heal through a participant-centered approach. He focuses on improving learning, retention, and application to deliver healing-based solutions.

#### Featured Book:

- "Connecting Paradigms: A Trauma-Informed & Neurobiological Framework for Motivational Interviewing Implementation" Available for purchase.

#### Objectives:

- Understand how trauma affects health risks.
- Apply Motivational Interviewing to patient care.
- Use TIMI for effective change talk.

#### Sponsoring Organization

- NMSU School of Nursing
- SAMHSA GLS Mental Health and Suicide Prevention Grant
- NMSU School of Social Work
- NMSU Counseling and Educational Psychology Department (5.5 CEUs for Social Work and CEP- Pending Nursing)

Registered?  
Done



### Beyond the Surface; Trauma-Informed Care and Motivational Interviewing

presented by

**Matthew S. Bennett, MA, MBA**

A relentless advocate for trauma-informed care and other interventions that help people and communities heal. He utilizes a participant-centered approach to maximize learning, retention, and application

Matt's mission is to guide individuals and organizations in delivering exceptional healing-based solutions. His related book will be available on-site and by ordering; Connecting Paradigms: A Trauma-Informed & Neurobiological Framework for Motivational Interviewing Implementation by Matthew S. Bennett (Author)

#### Sponsoring organization

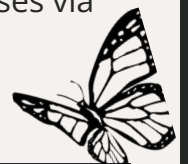
NMSU School of Nursing SAMHSA GLS Mental Health and Suicide Prevention Grant

NMSU School of Social Work

NMSU Counseling and Educational Psychology (CEP) Department

5.5 CEUs Have been requested and are pending for Social Work, CEP, and NM Nurses via the NMBON certification of CEU for NM Nurses.

[Click Here to Register](https://shorturl.at/L3NRK)



**The Social Buzz**



[socialwork.nmsu.edu](https://socialwork.nmsu.edu)





NMSU Child Welfare  
Scholars attend free of  
charge. First come, first  
serve to all other  
participants.

What a great  
opportunity!

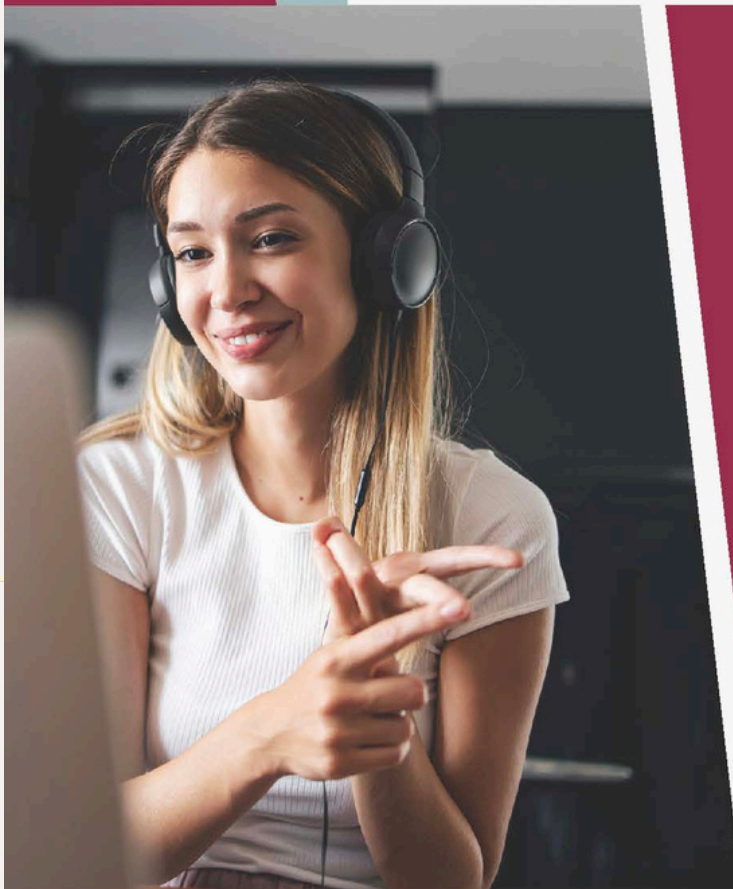
**BE BOLD.** Shape the Future.®  
New Mexico State University



# 2-DAY LICENSING EXAM SEMINAR

## ONLINE COURSE

Facilitators will help participants understand the exam dynamics and demonstrate how to effectively use strategies for selecting and using the information provided within each exam item to choose the most appropriate choice to increase their success with the exam.



**11/08/24 & 11/09/24**

9:00 AM - 4:00 PM

**\$50 - STUDENTS**  
**\$75 - NON-STUDENTS**

Facing Financial Difficulties?  
Email us to explore  
scholarship opportunities!

**REGISTER HERE**



**CALL FOR MORE INFO**  
575-646-5711

CHILD WELFARE SCHOLAR PROGRAM



**The Social Buzz**



socialwork.nmsu.edu



# October Newsletter



## A quick Look:

- General Information
- October 2024 Highlights
- A Quick Thanks
- Metrics, Basecamp and Staying Connected

### World Mental Health Day – October 10



World Mental Health Day was on October 10, and this year's theme is "Prioritize Mental Health in the Workplace." It also marks the final phase of the World Federation for Mental Health's 75th Anniversary Campaign, focusing on mental health and well-being at work.



Learn more at <https://tinyurl.com/WHOWMHD24>

### New Year, New Trainings!

If you're interested in becoming an LC3 training partner for the upcoming year, reach out to a coordinator using the contact information at the bottom of each page to explore this opportunity.

## Upcoming: Trainings:

### November 7-8th (2 Day Training - In-Person Only)

#### Motivational Interviewing (P1)

Serna Solutions - Brian Serna

9AM-4PM (12 CEUS)

Food & Beverage Provided

FYI + (1320 S Solano Dr, Las Cruces, NM 88001)

### November 14th (In Person-Only)

#### Cult. Competency: "A Bit of History Repeating"

InsideOut Advocacy

1PM-4PM (3 CEUS)

La Vida Project (118 N Main St, Las Cruces, NM 88001)

### November 15th & 18th (2 Days: Virtual-Only)

#### Mindfulness for Helping Professionals

Center of Innovation

10AM-12PM (3.75 CEUS)

### November 20th (Virtual-Only)

#### Verbal Intervention

NLBHA

9AM-4PM (6 CEUS)

### November 25th (In-Person Only)

#### Adult Mental Health First Aid

Center for Health Innovation

9AM-5PM (7.5 CEUS)

FYI + (1320 S Solano Dr, Las Cruces, NM 88001)

**RSVP For All Trainings @**  
**WWW.TINYURL.COM/LC3TRAININGS**

## Our Vision:

To build a behavioral health system that is inclusive, organized, centered on the individual and family, and is committed to advocating for and providing comprehensive mental health and substance use disorder services for people across Doña Ana County, New Mexico.

## Contact Information



Javier Guerrero (He, Him)

ICS Community Coordinator

[jguerrero@fyinm.org](mailto:jguerrero@fyinm.org)

575-202.6987



Amanda Vega (She, Her)

ICS Community Coordinator

[avega@fyinm.org](mailto:avega@fyinm.org)

575-319-0978

## Our Next Meeting

November 19th (Tuesday)

11:30AM-1PM

1320 S. Solano Dr.

Las Cruces, NM 88001







THE CENTER ON  
IMMIGRATION  
AND CHILD WELFARE



BE BOLD. Shape the Future.<sup>®</sup>  
School of Social Work



## Inclusive, Trauma-Informed Practices with Immigrants

A Training Series for Community Practitioners and Organizations

### About the training

This self-paced online training explores how service organizations and practitioners can implement policies and practices to increase inclusivity of immigrant families, and how trauma-informed practice can be tailored to address the unique experiences of immigrant families. It also includes discussion of a model for implementing immigrant specialist navigators within organizations.

**Six free cultural social work CEUs are available from the NMSU School of Social Work.**

### Who is it for?

This training is for leaders and frontline practitioners in organizations serving immigrant families across a variety of community settings.

### Modules

1. Migration & Trauma
2. Historical & Political Contexts
3. Trauma-Informed Practices & Interventions with Immigrants
4. Immigrant-Inclusive Organizational Policies & Practices
5. Secondary Trauma among Practitioners Working with Immigrant Populations

**ENROLL  
NOW!**



For more details visit: <https://cimmcw.org/immigrant-inclusivity-training>.

This training was developed with funding from the W.K. Kellogg Foundation.

## [Click Here to Enroll NOW!](#)



**The Social Buzz**



[socialwork.nmsu.edu](https://socialwork.nmsu.edu)

## IMPORTANT REMINDER

# STUDENT TOWN HALL

JOIN US IN SHAPING THE FUTURE OF OUR SCHOOL OF SOCIAL WORK!!

**NOV. 12, 2024 1PM-2PM**  
**IN HSS ROOM 219**

Zoom Attendance is  
Welcomed. Scan QR code  
or use code: 5101299345



**NOV. 20, 2024 5PM-6PM**  
**IN HSS ROOM 219**

### WHY ATTEND:

- Get inside look at program performance data
- Share experiences and suggestions
- Connect with program coordinators
- Help shape future improvements
- Be part of decision making process

Light refreshments will be provided!



**The Social Buzz**



[socialwork.nmsu.edu](https://socialwork.nmsu.edu)



## EVENTS TO KEEP IN MIND

**In person  
event! Yes  
please**

# DEMYSTIFYING DECOLONIAL RESEARCH



**Manal Hamzeh, Ph.D.**  
Borderlands and Ethnic Studies  
Director of BEST Research Center  
[manahamz@nmsu.edu](mailto:manahamz@nmsu.edu)



November 12th  
11 AM - 12 PM  
300 O'Donnell Hall  
Join via zoom:  
<https://nmsu.zoom.us/j/88585880786>

Join us for an introductory  
conversation on decolonial:

- Foundational concepts
- Methodologies
- Platforms for dissemination/publication

Scan here for readings:



**The Social Buzz**



[socialwork.nmsu.edu](http://socialwork.nmsu.edu)



## Lactation & Interpersonal/Intimate Partner Violence Training

November 13, 2024

9am-12pm

**3 CE HOURS FOR  
SOCIAL WORKERS**

APPROVED BY NASW-NM

**3 CE HOURS FOR  
CERTIFIED CHWs**

APPROVED BY NMDOH OFFICE OF  
COMMUNITY HEALTH WORKERS



**New Mexico**  
Breastfeeding Task Force

**NEW MEXICO**  
DEPARTMENT OF  
**HEALTH**

TRAINING MADE POSSIBLE IN PARTNERSHIP WITH NM DOH OFFICE OF  
INJURY & VIOLENCE PREVENTION



**REGISTER NOW**



**The Social Buzz**



[socialwork.nmsu.edu](http://socialwork.nmsu.edu)





## Center for Excellence in Social Work Updates

### Join us for upcoming Professional Development opportunities including:

Date: 11/14/24 (Thursday) & Time: 12 pm–1 pm (Mountain Time)

Details: CEUs 1 | Level: All | Cost: Free

Title: [Listen] Listening Session: Social Workers of New Mexico Survey

Presenters: Survey Research Team Members Sreyashi Chakravarty, PhD; Mónica Rae Otero, LMSW & Anna Nelson, PhD, LCSW

Organizer: Center for Excellence in Social Work

Location: Zoom

Registration: [Click Here](#)

Description: The Center for Excellence in Social Work invites you to a Listening Session about the recommendations and action steps that came out of the 2024 Social Workers of New Mexico Survey. This is a virtual Lunch & Discuss event. There will be a brief overview about the survey by research team members but the majority of the event will be an opportunity to share your experience and thoughts about putting needed change into action.

View the Center for Excellence in Social Work's recent and upcoming events: [Click Here](#)





**ALBUQUERQUE MSW SOCIAL #2**  
**2381 AZTEC NE, ALBUQUERQUE, NM 87107**

**FRIDAY 11.15.24 4:30-6:30P**



**EMAIL RSVP OR QUESTIONS TO ANNA OR LEIA**  
**HORNER@NMSU.EDU OR LEIATC@NMSU.EDU**

**Hello fellows MSWs!**

**We're coming back together one last time before the fall 2024 semester ends!**

**Please join us for our second ABQ-Based MSW Social on Friday, November 15.**

**We'll be meeting at the Canteen Brewhouse at 2381 Aztec Rd. NE, between Comanche and Candelaria and Princeton and Stanford. There's construction at I-25 and Comanche itself, so try to avoid that route.**

**See the emails below to RSVP or air questions.**

**And if you want to be added to the ABQ-based NMSU MSW contact list, let us know!**

**More details below...**

**Who: YOU! (cool NMSU MSW students)**

**What: ABQ-based MSW social**

**When: Friday, November 15th from 4:30-6:30 PM**

**Where: Canteen Brewhouse at 2381 Aztec Rd. NE, Albuquerque 87107**

**Why: Because online grad school is better with in-person community!**

**RSVP: [horner@nmsu.edu](mailto:horner@nmsu.edu), [leiatc@nmsu.edu](mailto:leiatc@nmsu.edu)**

**Fall has been skipped over by an early winter and for space, we'll be on the covered patio outside, but they do have space heaters for our comfort and sanity.**

**We'll send one more reminder next week. Hope to see you all there!**

**Warmly,**

**Anna Horner, Leia Cunningham, and Sean Cardinalli**



**The Social Buzz**



**[socialwork.nmsu.edu](http://socialwork.nmsu.edu)**





# CAFECITO WITH Las Americas Immigrant Advocacy



**Thursday November 21**

**12:00 PM**

**O'Donnell Hall 111**

**Join us to learn about the services offered  
by Las Americas Immigrant Advocacy.  
Ask questions and receive information  
about their legal services, human rights  
advocacy and resources for ALL  
immigrants.**

**ALL NMSU STUDENTS, FACULTY AND STAFF ARE INVITED!**



**NM  
STATE**

Latin American  
Programs



**LAS AMERICAS**  
IMMIGRANT ADVOCACY CENTER



**The Social Buzz**



[socialwork.nmsu.edu](http://socialwork.nmsu.edu)





# NOW HIRING!

## Youth Impact Strategist



**MORE  
INFO**



**The Social Buzz**



[socialwork.nmsu.edu](http://socialwork.nmsu.edu)





## **NMHU Facundo Valdez School of Social Work Updates**

With the support of Dr. César Abarca, Dean and Professor of the School of Social Work, we are conducting an opinion survey to gather insights and recommendations for the development of an online BSW program. Your feedback is essential in understanding the needs and preferences of prospective students. It will also support the design of a program of study that is relevant, accessible, and regionally and culturally informed.

The survey takes approximately 5 minutes to complete, and all responses will be confidential and used only for internal purposes of planning. We welcome the participation of students, educators, and community members to provide valuable input about the development of an online BSW program.

For more information contact Dean Abarca at [cabarca@nmhu.edu](mailto:cabarca@nmhu.edu) or (505) 260-6183.

This survey is now open at this link:

<https://www.surveymonkey.com/r/onlinebswopinionsurvey>





# NMSU

## — HOMECOMING —

### 2024

### NOVEMBER 8-9



## *Welcome home events!*

**NOV 8**  
**FRIDAY**

### **Distinguished Alumni Awards**

Las Cruces Convention Center  
**5 p.m.** – Cocktail Reception  
**6:30 p.m.** – Dinner and Awards

**NOV 9**  
**SATURDAY**

### **Aggie Reunion – Classes of '74 & '99**

North patio of the NMSU Art Museum at Devasthali Hall; Parking at Alumni Center.  
**8:30 to 11 a.m.**

**NOV 9**  
**SATURDAY**

### **Homecoming Parade**

Starts at Pan Am Center and proceeds down University Avenue  
**9:30 a.m.**

**NOV 9**  
**SATURDAY**

### **Homecoming Tailgate with Alumni and Friends**

North of Aggie Memorial Stadium in Pan Am Center parking lot  
**1 to 4 p.m.**

**NOV 9**  
**SATURDAY**

### **Homecoming Game – NMSU vs. Western Kentucky**

Aggie Memorial Stadium  
**4 p.m.**

**NOV 9**  
**SATURDAY**

### **Fireworks Show**

Fireworks show sponsored by the NMSU Foundation will launch from Sisbarro Park  
**After the Homecoming game**

For tickets and info visit: [nmsualumni.org/homecoming](https://nmsualumni.org/homecoming)



**The Social Buzz**



[socialwork.nmsu.edu](https://socialwork.nmsu.edu)



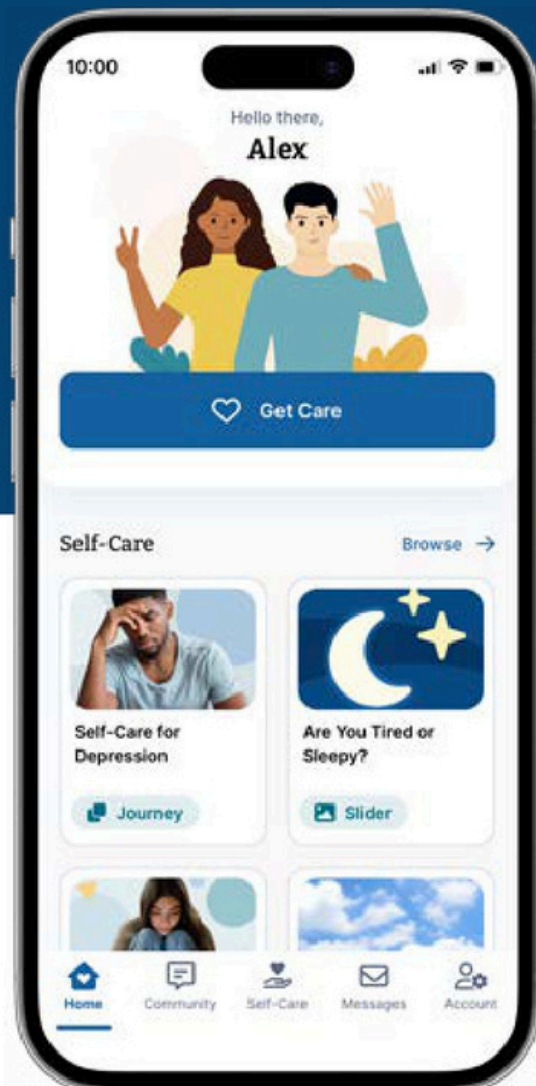




## Basic Needs Support When You Need It

Get connected to free or reduced-cost programs that provide support for:

- In-person health care
- Food assistance
- Housing assistance
- Transit
- Paying bills
- Child care
- Legal resources



**It's for Students.**  
**FOR FREE.**

 @timelycare

 @timely\_care

Get support now! Download the TimelyCare app or visit  
[timelycare.com/nmsu](https://timelycare.com/nmsu) to learn more.

©TimelyCare 2024



**The Social Buzz**



[socialwork.nmsu.edu](https://socialwork.nmsu.edu)





# Join Our Weekly Mindfulness Practice

Take a break and center yourself with our weekly Zoom mindfulness practice with Dr. Finno-Velasquez, open to both novice and experienced practitioners. Sessions are held every Thursday from 12:00-12:30 PM. If you'd like to receive weekly reminders via Outlook, please contact Maribel Lopez to get set up!

**When:** Thursdays, 12-12:30 PM

**Where:** [Join via Zoom](#)





## STAY CONNECTED

Exciting News for Our Social Work Community! We've launched a new Careers & Opportunities webpage dedicated to connecting you with meaningful job openings. From roles within NMSU to opportunities in the broader community, this page is designed to help you find positions that align with your passion and expertise. Visit the page to explore the latest listings and take the next step in your career!



CLICK HERE



## BUZZ IN NEXT WEEK

Stay tuned for the latest updates, stories, and highlights from the School of Social Work!

In next week's edition, we'll bring you:

- Spotlights on Recent Achievements
- Upcoming Events and Workshops
- Student and Faculty Features
- Useful Resources and Tips

Got something to share or a question to ask?

Feel free to reach out to us:

✉ mkeeper@nmsu.edu

☎ Phone: 575-646-7599

🏢 Office: HSS 210F

We'd love to hear from you and feature your news in our next issue!



**The Social Buzz**



socialwork.nmsu.edu