



# The Social Buzz



## School of Social Work

January 15- January 21, 2025

### MESSAGE FROM DIRECTOR



Welcome back! I hope you all had a restful and joy-filled winter break. We have so many exciting events planned for the upcoming semester and the Social Work Buzz will be THE place to get all the details. For those of you new to our school-welcome! We are so happy to have you join us. The Social Work Buzz is a weekly newsletter filled with information about happenings within the program, college, university and community. If you ever want to share something with your classmates (accomplishments, events, poetry, recipes!) please see the submission form below.

As Director of the School of Social Work (SSW), I am honored you have chosen our program to advance your career and make a real difference in the world. We have an amazing team of faculty and staff who are eager to help you along the way. Do not hesitate to reach out to anyone in the SSW for support and guidance-we are here for YOU!

Keep an eye out for more information on the following SSW Events:

- **Late January:** Bachelor Social Work Student Association Enchilada Plate Fundraiser (this will replace the previously announced Back to School Potluck!)
- **January 22:** MSW Admissions Info Session
- **January 24-25:** Licensure Prep Session
- **February 11:** Dr. Jessica Toft-University of Minnesota-Daring to Envision Professional Discretion and Better Working Conditions for Social Workers
- **February 27:** Student Advocacy and Action Day at the State Capitol
- **February 28:** Practicum Fair

Dr. Mary Nienow, Director





# MASTER OF SOCIAL WORK ADMISSIONS INFORMATION SESSION

LEARN MORE ABOUT THE ADMISSIONS  
PROCESS FOR OUR MSW PROGRAM

**JANUARY  
22nd**

**6:00-7:00 PM**

**PRIORITY  
DEADLINE  
EXTENDED  
1-31-25**

**REGISTER HERE**



**BE BOLD. Shape the Future.®**  
School of Social Work



**The Social Buzz**



socialwork.nmsu.edu 2





NMSU BACHELOR STUDENT OF  
SOCIAL WORK ASSOCIATION

# T-SHIRT FUNDRAISER



**POLOS**  
**\$30**

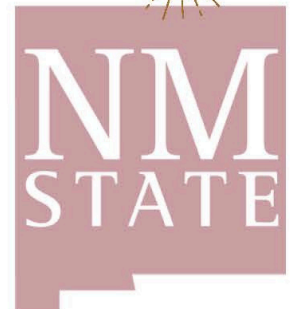


**HOODIES**  
**\$35**



**SOCIAL WORKER COPING SKILLS  
ALPHABET T-SHIRT**  
**\$25**

All proceeds  
are donated to  
BSSWA



See a BSSWA member for more info or visit [www.royalteescnm.com](http://www.royalteescnm.com)





BE BOLD. Shape the Future.<sup>®</sup>  
School of Social Work

# JESSICA TOFT

PhD, MSW, LISW



GUEST  
SPEAKER

## DARING TO ENVISION PROFESSIONAL DISCRETION AND BETTER WORKING CONDITIONS FOR SOCIAL WORKERS

11TH  
FEB

In this public talk, Dr. Toft actively engages the audience to think about the nature and importance of professional discretion of social workers and how social workers can fight for it in today's challenging workplaces. Her team undertook a statewide anonymous survey and confidential interviews on the effects of intensified business management on social workers' practice and working conditions. Social workers experience considerable pressure to work quickly, take on more clients, labor under commission-based structures, and more. Amid such conditions, findings show that social workers' practice discretion is markedly limited. Yet, social workers are resisting, and their varied examples deserve careful consideration for today's social work practice. Toft invites attendees to learn from the historical record of the myriad ways social workers have fought for professional discretion and better working conditions amid shifting political, social, and economic contexts. This account illustrates that while social workers' resistance may have been muted under neoliberal social welfare policies over the last 45 years, there is a lengthier history of social work solidarity that we can learn from for the professional fights ahead.

**Domenici Hall 109**

**12:00pm-1:30pm**

1305 Frenger St.  
Las Cruces, NM

4  
Lunch will be served at 12-12:15pm



## Join Us for our new Social Work Faculty Candidate Interviews!

We're thrilled to invite you to join us for the interviews of three exceptional candidates for our faculty position. This is a wonderful opportunity to engage with them and learn about their vision and expertise!

**Register below for each candidate to join us for these engaging sessions:**

### Candidate 1

Thursday, January 23 · 8:30 – 11:30am

Interview Student Session

<https://nmsu.zoom.us/meeting/register/0nB9u7mBSoqp0fiHIPGlaQ>

### Candidate 2

Friday, January 24 · 8:00 – 11:00am

Interview Student Session

<https://nmsu.zoom.us/meeting/register/D3LKgPzDQ-qFDdnjS40rkw>

### Candidate 3

Monday, January 27 · 9:30am – 1:00pm

Interview Student Session

<https://nmsu.zoom.us/meeting/register/G-inviLiR-aWbjVD2GzLqg>



**BE BOLD. Shape the Future.®**  
**School of Social Work**



# IMPORTANT REMINDER



## CHILD WELFARE SCHOLAR PROGRAM 2-DAY LICENSURE EXAM PREPARATION SEMINAR

# ONLINE COURSES

Facilitators will help participants understand the exam dynamics and demonstrate how to effectively use strategies for selecting and using the information provided within each exam item to choose the most appropriate choice to increase their success with the exam.

1/24/25 & 1/25/25  
9:00 AM - 4:00PM



Call to Find Out More  
**+575-646-5711**



Child Welfare Scholar Program  
School of Social Work  
**BE BOLD. Shape the Future.®**  
New Mexico State University

**\$50 Students**  
**\$75 Non-Students**  
**Financial Assistance**  
**Available**

*Child Welfare Scholars  
Attend free of charge  
and have priority.  
First come, first serve  
basis for all other  
participants.*





# Survivors of Suicide Free Support Group

**Have you lost someone you love to suicide?  
The next free 8-week closed support group for people  
who lost a loved one to suicide is starting soon.**

This free SOS support group is sponsored by the Las Cruces  
Suicide Prevention Task Force and Peak Behavioral Health.

**Loss of a loved one by suicide is a complex and  
difficult grief experience that can feel isolating.  
The goal of this SOS support group is to provide  
guidance, education, and support through the  
grief process.**



Email Inquiries

SOS groups meet on  
Tuesdays in Las  
Cruces from  
5:30pm-7:30pm. The  
next group will begin  
on January 14, 2025,  
and meet weekly  
until March 4, 2025

**Inquiries & Registration:**

**Call/Text: (575) 249-5375**

**Email: [sosgroupLC@gmail.com](mailto:sosgroupLC@gmail.com)**



NM  
STATE



# Teaching Academy

## *Teaching statements* *A mirror of and guide to your teaching*

**Oana Cimpean**  
Teaching Academy

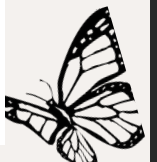
**Graduate students and postdocs:** Teaching statements may seem like another hurdle to pass through during your job application or tenure process. They don't have to be. They can serve as a mirror reflecting what is happening in your actual classroom, but also a touchstone to what you think your teaching should be. Come and join us for this interactive workshop and leave with a first draft.



**Co-sponsored by the NMSU Postdoc Association**

**Thursday, January 30**  
**1:00-2:15 OR**  
**Friday, January 31**  
**9-10:15**  
**Zoom**

Registration is required at [teaching.nmsu.edu](http://teaching.nmsu.edu). If you have problems registering online, call 646-2204 for help.



**The Social Buzz**



[socialwork.nmsu.edu](http://socialwork.nmsu.edu) 8





---

**Below are some key dates and deadlines to remember:**

**Classes Begin:**

Wednesday, January 15

**Martin Luther King Jr. Day (Campus Closed):**

Monday, January 20

**Last Day to Add a Class with Instructor's Signature:**

Monday, January 27

**Last Day to Drop a Class (i.e., cancel registration for full semester courses)**

Friday, January 31

**Spring Break (No Classes)**

March 10 - 14

**Last Day to Withdraw from a Course with a W (for full semester courses)**

Thursday, March 20

**Spring Holiday (No Classes)**

Friday, April 18

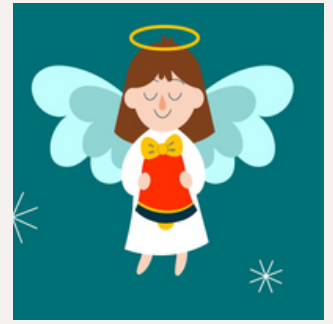
**Finals Week**

May 5 - 9





Thank you 



The Child Welfare Scholar Program at NMSU would like to extend our heartfelt gratitude to everyone who contributed to the success of this year's Angel Tree Project.

Thanks to your generosity and support, we were able to ensure that every child on our tree received a meaningful gift this holiday season. Your kindness has brought joy, hope, and a sense of belonging to children in protective care during a time of year that can be especially challenging.

Whether you sponsored a child, helped spread the word, or offered your time and resources, your contributions made a tremendous difference. This project would not have been possible without the dedication of our community.

Thank you for embodying the spirit of the season and for being part of such a meaningful initiative. Together, we've made the holidays brighter for so many children and their families.

Wishing you and your loved ones a joyful and peaceful holiday season!



## STAY CONNECTED

Exciting News for Our Social Work Community! We've launched a new Careers & Opportunities webpage dedicated to connecting you with meaningful job openings. From roles within NMSU to opportunities in the broader community, this page is designed to help you find positions that align with your passion and expertise. Visit the page to explore the latest listings and take the next step in your career!



CLICK HERE



## BUZZ IN NEXT WEEK

Stay tuned for the latest updates, stories, and highlights from the School of Social Work!

In next week's edition, we'll bring you:

- Spotlights on Recent Achievements
- Upcoming Events and Workshops
- Student and Faculty Features
- Useful Resources and Tips

Got something to share or a question to ask?

Feel free to reach out to us:

✉ mkeeper@nmsu.edu

☎ Phone: 575-646-7599

🏢 Office: HSS 210F

We'd love to hear from you and feature your news in our next issue!

