

The Social Buzz

School of Social Work

September 4- September 10, 2025

MESSAGE FROM DIRECTOR

Welcome back from the Labor Day break! I hope you had a chance to relax and enjoy some well-deserved time off. Now we can really dig into the semester. There are so many things happening on campus and in our community. I encourage you to take advantage of these opportunities to connect with each other outside of the classroom. If you have anything to share with your classmates, feel free to send it my way for inclusion in a future Buzz. Our School of Social Work community is full of and creative people (artists, photographers, poets, leaders) so let's use this space to showcase all of your amazing gifts and interests!



Mary Nienow

Dr. Mary Nienow, Director





Social Work Students: Your Voice Matters!

Listening Session

Share your experiences, ideas, and vision for the School of Social Work, openly or anonymously, in a **student-led space** via Zoom

Please scan the QR code to fill out the survey and tell us what you want to see!

SURVEY
CLICK HERE



CLICK HERE to Join:



Friday on Sept.
5, 2025

6:00 pm -
7:00 pm





PARTICIPANTS NEEDED

TEACHERS' PERSPECTIVES
AND EXPERIENCES WITH
SCHOOL-BASED MENTAL
HEALTH AND STUDENT
SUPPORT SERVICES



DR. STACY GHERARDI

is conducting an international study on teachers' perspectives and experiences with school-based mental health and student support services.

This study is seeking NMSU graduate students in the college of HEST who are currently working or have worked as elementary school teachers.



Participation involves a one-on-one interview lasting approximately 45-60 minutes, conducted via Zoom.

If you meet the criteria above and are interested in participating, please reach out to Principal Investigator Stacy

Gherardi at sgherard@nmsu.edu to share your interest. Participants will receive a \$10 Amazon.com gift card, and your perspectives will contribute to a broader understanding of school-based mental health services and may inform future policies and practices.





Join us to learn about the John S. McCain Strategic Defense Fellowship Program!



The Department of Defense will host virtual information sessions for prospective applicants on the dates and times identified below. If you're interested in joining a session, please RSVP at

RSVP

<https://forms.osi.apps.mil/r/wtUATJswtr>.

To stay informed about this unique developmental program, please sign up for our mailing list at <https://forms.osi.apps.mil/r/DW09v2tU0j>.

SIGN UP

Date	Time
Monday, September 22, 2025	3:00 pm – 4:30 pm ET
Tuesday, September 23, 2025	11:00 am – 12:30 pm ET
Wednesday, September 24, 2025	4:00 pm – 5:30 pm ET
Thursday, September 25, 2025	1:00 pm – 2:30 pm ET
Friday, September 26, 2025	11:00am – 12:30pm ET

Contact us at whs.mccainfellows@mail.mil.



The Social Buzz



socialwork.nmsu.edu 4





Welcome back students! Last Spring we launched a **Faculty Recognition program**. We are excited to continue recognizing faculty this year. If there is an instructor/advisor/administrator who has helped you during your time at NMSU, consider nominating them for this honor. Please scan the QR code or click link below to vote!

CLICK HERE

Outstanding Faculty Recognition Form





Substance Use Disorder, Addiction, Harm Reduction

VIRTUAL TRAINING PROVIDED BY
**THE NATIONAL LATINO
BEHAVIORAL HEALTH
ASSOCIATION**

NO COST - BROUGHT TO YOU BY LC3

3 CEUS



RSVP REQUIRED - VIRTUAL ONLY

VIRTUAL - ZOOM

SPOTS LIMITED - 3 CEUS

THURSDAY
SEP 23
9A-12P

RSVP AT
[HTTPS://TINYURL.COM/LC3TR25](https://tinyurl.com/LC3TR25)
OR SCAN QR CODE
FREE VIRTUAL TRAINING
SPOTS LIMITED

FOR MORE INFORMATION
CONTACT JAVIER GUERRERO,
ICS STRATEGIST AT
JGUERRERO@FYINM.ORG



The Social Buzz



socialwork.nmsu.edu 6





About the Training

SUBSTANCE USE DISORDER, ADDICTION, HARM REDUCTION

THIS TRAINING PROVIDES AN IN-DEPTH LOOK AT SUBSTANCE USE DISORDER (SUD) AND ADDICTION THROUGH A CLINICAL, SOCIAL, AND COMMUNITY LENS. PARTICIPANTS WILL EXPLORE THE SCIENCE OF ADDICTION, THE IMPACT OF STIGMA, AND EVIDENCE-BASED STRATEGIES TO SUPPORT INDIVIDUALS AND FAMILIES. THE SESSION EMPHASIZES HARM REDUCTION APPROACHES, OFFERING PRACTICAL TOOLS AND INTERVENTIONS THAT PROMOTE SAFETY, HEALTH, AND RECOVERY WITHOUT JUDGMENT. DESIGNED FOR BEHAVIORAL HEALTH PROVIDERS, CASE MANAGERS, AND COMMUNITY PROFESSIONALS, THIS COURSE EQUIPS PARTICIPANTS WITH THE KNOWLEDGE AND SKILLS TO BETTER ENGAGE AND SUPPORT THOSE IMPACTED BY SUBSTANCE USE.

CEUS: 3

About the Trainer



**DR. J ROCKY ROMERO, LMSW
(HE, HIM)
PROGRAM DIRECTOR
NATIONAL LATINO BEHAVIORAL
HEALTH ASSOCIATION (NLBHA)**

DR. J ROCKY ROMERO IS A SEASONED BEHAVIORAL HEALTH PROFESSIONAL WITH OVER TWO DECADES OF EXPERIENCE IN PROGRAM DEVELOPMENT, EVALUATION, AND TRAINING. HE IS CURRENTLY A PROGRAM DIRECTOR WITH THE NATIONAL LATINO BEHAVIORAL HEALTH ASSOCIATION (NLBHA) AND CEO OF JR ROMERO & ASSOCIATES. DR. ROMERO HAS SERVED AS A CONSULTANT AND TRAINER FOR NUMEROUS NATIONAL INITIATIVES, INCLUDING SAMHSA-FUNDED PROGRAMS AND THE NATIONAL HISPANIC & LATINO MHTTC. HE IS A LEADING TRAINER FOR THE CLAREJ MATRIX MODEL OF SUBSTANCE USE TREATMENT, SPECIALIZING IN WORK WITH TRIBAL AND INDIGENOUS COMMUNITIES ACROSS THE U.S. AND INTERNATIONALLY. A FORMER PROFESSOR AND CULTURAL COMPETENCY LEADER, DR. ROMERO BRINGS DEEP EXPERTISE IN EQUITY-CENTERED LEADERSHIP AND BEHAVIORAL HEALTH SYSTEMS.

RSVP REQUIRED - VIRTUAL ONLY

VIRTUAL - ZOOM

SPOTS LIMITED - 3 CEUS

THURSDAY
SEP 23
9A-12P

RSVP AT
[HTTPS://TINYURL.COM/LC3TR25](https://tinyurl.com/LC3TR25)
OR SCAN QR CODE
FREE VIRTUAL TRAINING
SPOTS LIMITED

FOR MORE INFORMATION
CONTACT JAVIER GUERRERO,
ICS STRATEGIST AT
[JGUERRERO@FYINM.ORG](mailto:jguerrero@fyinm.org)



The Social Buzz



socialwork.nmsu.edu 7





Social Work & Political Resistance: The Role of Social Work in Mutual Aid

September 18, 2025 | 6 p.m. – 7:30 p.m. ET | [Register](#)



As future social workers, you're stepping into the field during a time of deep social and systemic disruption. Mutual aid—communities coming together to meet each other's needs when institutions fail or cause harm—is a powerful tool for justice and care. But mutual aid isn't charity. It's about solidarity, challenging inequality, and building new ways of supporting one another outside of broken systems. This webinar invites you to explore how mutual aid, abolition, and transformative justice connect to social work values and practice. We'll unpack the question: Can the profession evolve to truly support radical change, or will it stay tied to systems that maintain the status quo? Learn how you can be part of shaping a more just and liberated future through your work and advocacy.

Presenter: Chris Fike, MS, LMSW-Macro. Region 5 Representative on the NASW-MI Board of Directors





How SW Student Peer Support can Help!



Emotional Support

With the most current events and changes, we are here to listen to your concerns, provide a safe space for all thoughts and feelings, and offer coping strategies. You are not alone, and we are in this together!



Academic Support

We are students too, and we want to share our knowledge and tips to help you all succeed as you navigate the Social Work Program and develop the skills and confidence throughout your journey



Professional Development

We can help you with all inquiries regarding resume building, filling out applications, interview preparation, career planning, skill development, and networking opportunities



Community Building

We strive to create an inclusive and welcoming environment where students can build meaningful connections with their peers through social events, meet & greets, and collaborative learning experiences



Scan here to make an appointment with us:

We hope to connect with you!





OFFICE HOURS

Monday
5 PM - 7 PM

Tuesday
7 AM - 9 AM / 5 PM - 8 PM

Wednesday
7 AM - 9 AM

Thursday
7 AM - 9 AM / 5 PM - 8 PM

Friday
7 AM - 9 AM / 1 PM - 7 PM

Can't meet at these times? Schedule
an appointment using our QR code!

Office Location:

HSS Building, 2nd floor, room 201

Zoom Link:

<https://nmsu.zoom.us/j/831912592>

21#success



nmsu_socialworkpeersupport





Careers & Opportunities webpage dedicated to connecting you with meaningful job openings. From roles within NMSU to opportunities in the broader community, this page is designed to help you find positions that align with your passion and expertise. Visit the page to explore the latest listings and take the next step in your career!

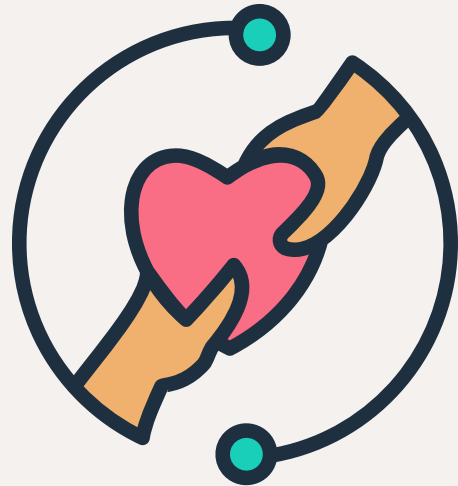


Careers & Opportunities



CONNECT WITH US

School of Social Work Website



Facebook



Instagram



Stay tuned for the latest updates, stories, and highlights from the School of Social Work!

In next week's edition, we'll bring you:

- Spotlights on Recent Achievements
- Upcoming Events and Workshops
- Student and Faculty Features
- Useful Resources and Tips

Got something to share or a question to ask?

Feel free to reach out to us:

✉ socwork@nmsu.edu

☎ Phone: 575-646-2143

🏢 Office: HSS 210

We'd love to hear from you and feature your news in our next issue!

