



# The Social Buzz



## School of Social Work

**May 7- May 13, 2025**

### MESSAGE FROM DIRECTOR

#### **Celebrating Your Accomplishments**

To our graduating students: Congratulations on reaching this significant milestone! Your resilience, particularly during challenging times, has been extraordinary. You have demonstrated not only academic excellence but also a deep commitment to our profession's values of social justice, human dignity, and service. As you prepare to join the ranks of our distinguished alumni, remember that you carry with you the unique perspective and skills developed during your time here.

To our continuing students: Your growth this semester has been remarkable. From field placements to classroom discussions, you've engaged critically with complex social issues and have shown an unwavering dedication to developing your practice. Take pride in how far you've come and use this summer to rejuvenate your spirit for the journey ahead.

#### **Looking Ahead**

As we transition into summer, I encourage each of you to find balance. Whether through rest, reflection, continued learning, or community involvement, use this time to nurture your wellbeing and passion for social work.

#### **Final Thoughts**

The work of social workers has never been more essential. In a world facing significant challenges, your commitment to creating positive change matters profoundly. I am deeply honored to lead this exceptional community and remain committed to supporting your growth and success.

Have a wonderful summer, and please don't hesitate to reach out if you need support during the break.

With gratitude and pride,

Dr. Mary Nienow, Director



**The Social Buzz**



[socialwork.nmsu.edu](http://socialwork.nmsu.edu) 1



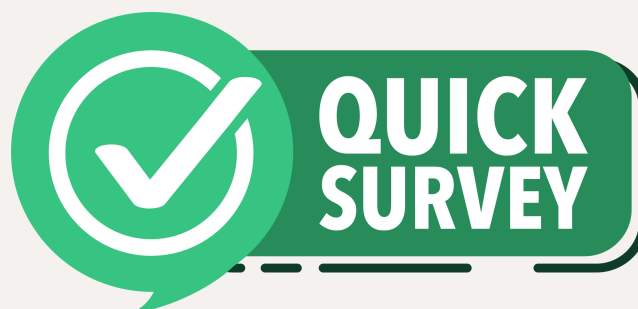
Each year we have an

## **Annual School of Social Work Student Survey**

Your response is completely anonymous. Responses for this help us make programmatic improvements. It should take no more than 5-10 minutes to complete.

Survey Link:

[https://chssnmsu.azl.qualtrics.com/jfe/form/SV\\_3xFaWCB\\_2gCAnIm6](https://chssnmsu.azl.qualtrics.com/jfe/form/SV_3xFaWCB_2gCAnIm6)





# CONGRATS!

## CLASS OF 2025



### **Let's Celebrate!**

Meet up with your social work cohort  
for drinks, food, and conversation

Bosque Brewing Co.

University Ave.

May 8<sup>th</sup>, 2025

5-7pm (ish)





# SUMMER

Taking summer electives is a great way to reduce your workload during the academic year. This School Social Work Class is only offered in the Summer and is not available during the academic year.

**Don't miss out!**

## **29240 SWK 5996 U71 Special Topics: SW in and with Schools**

This is a great course if you are going into a school social work practicum in the fall or are interested or curious about school social work. School social work is more focused than generalist practice, therefore this course is meant to provide foundational policy and practice skills impacting school social work and the provision of school-based non-academic supports broadly. While the focus will be on social work, we will cover issues of educational equity, school mental health, social-emotional learning, and behavior supports in a way that is accessible to all school-based professions. When you leave this course, you should have engaged in some critical thought about the ways in which schools address student social and behavioral needs as well as some concrete skills for assessment, intervention, and evaluation in these areas.

# COURSE





## School of Social work Summer 2025 Course Offering



### Interested in Child Welfare?

Looking for an elective course option to take this summer?

- **SOWK 5996 Family and Child Welfare Practice (Trauma Informed Child Welfare Practice) with Special Populations**
  - (Asynchronous Online)
    - Main Campus ( M72), CRN: 30254
    - NMSU Global (U72), CRN: 30255
- **SOWK 4996**
  - Main Campus (M71), CRN: 30252
  - NMSU Global (U71), CRN: 30253
    - Course Dates: 5/14/25 – 7/3/25
    - Instructor: Mónica Montoya
- Course Description: This course offers a critical examination of the occurrence and impact of trauma with special populations and client systems in the child welfare system. Students will develop an understanding of trauma and how it impacts the development and functioning of infants, children, adolescents, and adults.







**JUNE 10-11,  
2025**

## **STUDENT OPPORTUNITY!**

Dr. Finno-Velasquez is **seeking a motivated student** for a unique opportunity to attend and assist with **a statewide convening** for approximately 75 invitees on **June 10-11, 2025 in Albuquerque, NM**. We are especially in need of a student **with interest and/or experience in managing audio/visual equipment e.g., microphones, etc.**

- The event will be a full day on June 10<sup>th</sup> (approx. 9:30am – 5:00pm plus a 2 hr reception 5:00pm-7:00pm) and a half day (approx. 8:00am-2:00pm) on June 11<sup>th</sup>.
- This event will bring together **immigrant-serving organizations from across the state** to launch a statewide collaborative focused on building capacity, sharing resources, and developing strategic partnerships to enhance service quality for immigrant families throughout New Mexico.
- The event will feature various **panels and interactive sessions** on topics such navigating the current immigration landscape; sensitive locations, and organizational security; family preparedness and support; networking, and more. Students are welcome to attend convening panels and learning sessions.
- Students traveling from outside the Albuquerque area will receive **up to a \$400 stipend** to cover the cost of travel and accommodations. Food will be provided (breakfast snacks, lunch, and hors d'oeuvres on June 10<sup>th</sup> and breakfast, lunch, and snacks on June 11<sup>th</sup>).
- **Student responsibilities may include** assisting with attendee check-in, set up and break down, note-taking for panels and breakout sessions, assisting with managing audio/visual equipment, and other duties to support project staff.



**BE BOLD. Shape the Future.™**  
School of Social Work



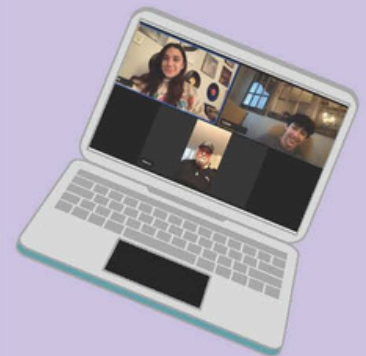


## Who We Are

Conversations to Remember is a 501(c)(3) charity whose mission is to combat feelings of isolation and loneliness among senior citizens. We facilitate weekly video calls with senior citizens, including those with dementia, with the goal of creating intergenerational friendships.

Young adult college students will engage in virtual visits with a senior citizens. These seniors are lonely, and are excited to speak with you. Each video call will have 2-3 student volunteers matched with one senior. The calls will be for one hour, at the same time each week. You will only be matched for a call at a time when you are available. You must commit to continuing in the program for at least 4 months. Conversations to Remember will provide you with training and support.

## How You Can Get Involved



email: [info@ConversationstoRemember.org](mailto:info@ConversationstoRemember.org)  
telephone: 862-243-5331





# Las Penas con Pan son Buenas: The Process of Grief through a Hispanic Lens.

PROVIDED BY GEMAS DE VIDAS

CEUS PROVIDED BY CENTER FOR  
HEALTH INNOVATION

NO COST - BROUGHT TO YOU BY LC3

**6 CEUS**



RSVP REQUIRED - IN-PERSON ONLY, FOOD & BEVERAGES PROVIDED

**IN-PERSON AT LA VIDA PROJECT**

SPOTS LIMITED - 6 CEUS (118 N MAIN ST., LAS CRUCES, NM, 88001)

TUESDAY

**MAY 13**

9A-3:30P

RSVP AT  
[HTTPS://TINYURL.COM/LC3TR25](https://tinyurl.com/LC3TR25)

OR SCAN QR CODE

FREE TRAINING  
SPOTS LIMITED

FOR MORE INFORMATION  
CONTACT JAVIER GUERRERO, ICS  
COMMUNITY COORDINATOR AT  
JGUERRERO@FYINM.ORG



**The Social Buzz**



socialwork.nmsu.edu 8







# 2025 ANNUAL MEETING

LC3 Behavioral Health Collaborative Presents



# 05.20.2025

May is Mental Health Awareness Month—a time to come together, break the stigma, and build stronger systems of care. Join us for a powerful day of conversation, learning, reflection, and community engagement.

Featuring Panel Discussions

Youth Behavioral Health | Criminal Justice | Crisis Response

**10AM-2PM | NM FARM AND RANCH HERITAGE MUSEUM  
4100 DRIPPING SPRINGS RD, LAS CRUCES, NM 88011**

FOOD & DRINKS PROVIDED | SPOTS LIMITED  
RSVP AT [WWW.TINYURL.COM/LC3AM25](http://WWW.TINYURL.COM/LC3AM25)  
(OR SCAN QR CODE)



**FOR MORE INFORMATION CONTACT:**  
JAVIER GUERRERO | [JGUERRERO@FYINM.ORG](mailto:jguerrero@fyinm.org) | 575-202-6987



**The Social Buzz**



[socialwork.nmsu.edu](http://socialwork.nmsu.edu) 9



# Cultural Competency & Humility

## Featured Trainer

FREDRICK SANDOVAL, MPA  
EXECUTIVE DIRECTOR,  
(HE, HIM, HIS)  
NATIONAL LATINO  
BEHAVIORAL HEALTH  
ASSOCIATION



TRAINING

PROVIDED BY NATIONAL LATINO BEHAVIORAL  
HEALTH ASSOCIATION

NO COST - BROUGHT TO YOU BY LC3

**3 CEUS**

RSVP REQUIRED - VIRTUAL ONLY

**VIRTUAL - ZOOM**

SPOTS LIMITED - 3 CEUS

THURSDAY

**MAY 22**

9A-12P

RSVP AT  
[HTTPS://TINYURL.COM/LC3TR25](https://tinyurl.com/LC3TR25)  
OR SCAN QR CODE

FREE VIRTUAL TRAINING  
SPOTS LIMITED

FOR MORE INFORMATION  
CONTACT JAVIER GUERRERO, ICS  
COMMUNITY COORDINATOR AT  
JGUERRERO@FYINM.ORG



**The Social Buzz**



socialwork.nmsu.edu 10





# Graduate

## ASSISTANTSHIP

MSW Students,

Friendly Reminder- Apply for the Graduate Assistantship for the academic year 2025-2026 with the School of Social Work. This is a fantastic opportunity to gain valuable experience while supporting the important work of our school.

To apply, please complete the application form here:  
<https://forms.office.com/r/8VRHyWPhvc>

**The deadline to submit your application is May 9th.**

For more information on the graduate assistantship, including rules and regulations, how to apply, and next steps, please visit the [Graduate Assistant Information page](#)

If you have any questions, feel free to reach out. We look forward to receiving your application!





**Careers & Opportunities** webpage dedicated to connecting you with meaningful job openings. From roles within NMSU to opportunities in the broader community, this page is designed to help you find positions that align with your passion and expertise. Visit the page to explore the latest listings and take the next step in your career!

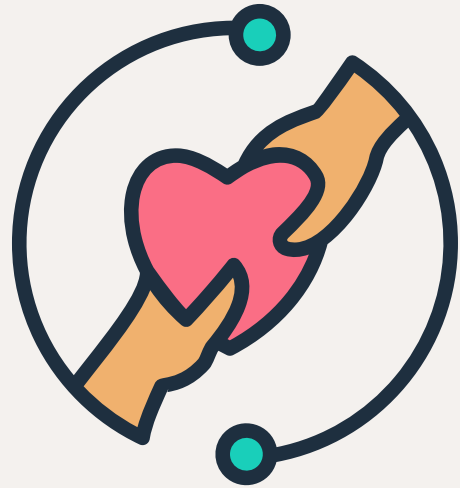


**Careers & Opportunities**



# CONNECT WITH US

## School of Social Work Website



## Facebook



## Instagram



Stay tuned for the latest updates, stories, and highlights from the School of Social Work!

In next week's edition, we'll bring you:

- Spotlights on Recent Achievements
- Upcoming Events and Workshops
- Student and Faculty Features
- Useful Resources and Tips

Got something to share or a question to ask?

Feel free to reach out to us:

✉ [mkeeper@nmsu.edu](mailto:mkeeper@nmsu.edu)

☎ Phone: 575-646-7599

🏢 Office: HSS 210F

We'd love to hear from you and feature your news in our next issue!

