



The Social Buzz



School of Social Work

March 5- March 11, 2025

MESSAGE FROM DIRECTOR

Happy Social Work Month!

As many of you know, March is officially Social Work month. One of our amazing BSW's, Andres Uribe, has been working with the City of Las Cruces to officially declare Social Work Month. See information below for the signing of the proclamation!

I'm also excited to announce our first Student Spotlight (see below). I had the honor of attending a committee hearing with Lorena last week at SANA and watched with immense pride as she testified in support of a bill that would provide graduate student scholarships in behavioral health programs (like social work).

For those of you awaiting admission decisions for our BSW and MSW program, hold on tight! We are hoping to have those out by the end of the week.

I know many of you are ready for spring break-and so are we! No Buzz next week, but we'll be back the following week with all the latest and greatest news.

Finally, I want to continue to remind you that the number one job of faculty, staff, and peer mentors within the School of Social Work is to serve as a support to you. We know you have a lot going on, and sometimes in the flurry of classes, work, home, and current events it can be hard to realize you may need help or to even find the time to ask for it. We are thinking about you and are all ready to assist in any way possible. Reach out early and often!

Dr. Mary Nienow, Director





JOIN US IN RECOGNIZING

NATIONAL SOCIAL WORK MONTH

Each Each day, social workers help millions of Americans navigate life's challenges. They work in our healthcare facilities, our schools, and government agencies – just to name a few. In their work, they impact the lives of millions and profound ways. We need to continuously empower social workers and ensure they have the resources they need to transform compassion into action.

**JOIN US IN ACCEPTING A LAS CRUCES CITY COUNCIL
PROCLAMATION RECOGNIZING SOCIAL WORK MONTH!**

ON MARCH 17TH @ 1PM IN CITY COUNCIL CHAMBERS

700 N MAIN ST, LAS CRUCES, NM

" Growing up in Las Cruces all my life, I was motivated to draft this city proclamation to acknowledge and honor crucial role social workers have in supporting our local communities. Their dedication to promoting justice, equality, and human well-being deserves recognition."

- Andrés Uribe, BSW student





DRAFTED PROCLAMATION

WHEREAS, March is National Social Work Month: "Compassion and Action", as recognized by the National Association of Social Workers (NASW); and

WHEREAS, for generations the social work profession has been at the forefront of improving human well-being and meeting the basic human needs of all people in this nation, guided by the foundational principles of service, social justice, dignity and worth of the person, importance of human relationships, integrity, and competence; and

WHEREAS, the City of Las Cruces recognizes the many significant contributions social work professionals have made throughout time and in various settings, including schools, healthcare facilities, behavioral health facilities, child welfare agencies, community organizations, and government agencies, advocating for critical policies and programs that enhance human well-being and meet the needs of Las Crucians; and

WHEREAS, the contributions of social workers extend to addressing critical issues affecting communities, such as poverty and homelessness, social inequality and discrimination, behavioral and mental health, and family and community well-being, ensuring all individuals have access to necessary resources and forms of support throughout their lifespan; and

WHEREAS, research continues to illustrate the presence of social workers in public and private spaces improves the quality of life of our community;

NOW, THEREFORE, WE, The City Council and Mayor of Las Cruces, New Mexico do hereby proclaim March 2025 as Social Work Month and call all residents to celebrate and support the social work profession.





Student Spotlight

Lorena Edith Valencia Parra, MSW Student

I participated in SANA student advocacy and action day during the legislative session in Santa Fe, NM. There were about 25-30 NMSU students from the undergraduate and graduate level. I was fortunate enough to sit in committee hearings regarding the attempts of institutionalizing bilingual education, debate surrounding the elimination of the social security tax, and the support to create scholarships and funding to sustain New Mexico residents seeking to acquire higher education. The discussions for each committee hearing were extremely informative and they deeply reflected the unique beauty of democracy in the state of New Mexico. Participation in events like SANA should remain an integrated offering for social work students, as these discussions directly influence and shape social workers' advocacy roles and responsibilities within the social welfare landscape.



I am grateful to the NMSU staff for their dedication in advertising, organizing, and executing this valuable event. It should be offered annually to ensure all students have the opportunity to engage with the legislative session and diverse governmental processes. I will actively engage in New Mexico's legislative sessions and deepen my understanding of state policy because my passion lies in leveraging this knowledge to benefit my community. I plan to build a career at the intersection of social work and politics in New Mexico, where I can serve my neighbors while influencing legislative processes. My mission is to unite communities and empower individuals to recognize the strength of their collective voice. Specifically, I aim to work alongside New Mexico's immigrant communities, demonstrating how knowledge and solidarity can create meaningful change.





**JUNE 10-11,
2025**

STUDENT OPPORTUNITY!

- Dr. Finno-Velasquez is seeking 3 motivated students for a unique opportunity to attend and assist with a statewide convening for approximately 75 invitees on June 10-11, 2025 in Albuquerque, NM.
- The event will be a full day on June 10th (approx. 9:30am – 5:00pm plus a 2 hr reception 5:00pm-7:00pm) and a half day (approx. 8:30am-1:00pm) on June 11th.
- This event will bring together immigrant-serving organizations from across the state to launch a statewide collaborative focused on building capacity, sharing resources, and developing strategic partnerships to enhance service quality for immigrant families throughout New Mexico.
- The event will feature various panels and interactive sessions on topics such navigating the current immigration landscape; sensitive locations, and organizational security; family preparedness and support; networking, and more. Students are welcome to attend convening panels and learning sessions.
- Students traveling from Las Cruces will receive a \$400 stipend to cover the cost of travel and accommodations. Food will be provided (breakfast, lunch, and hors d'oeuvres on June 10th and breakfast on June 11th).
- Student responsibilities may include assisting with attendee check-in, set up and break down, note-taking for panels and breakout sessions, and other duties to support project staff.



BE BOLD. Shape the Future.™
School of Social Work

**Interested students can send an email to Dr. Mary Nienow
mnienow@nmsu.edu**





How SW Student Peer Support can Help!



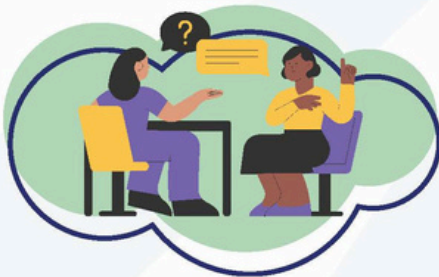
Emotional Support

With the most current events and changes, we are here to listen to your concerns, provide a safe space for all thoughts and feelings, and offer coping strategies. You are not alone, and we are in this together!



Academic Support

We are students too, and we want to share our knowledge and tips to help you all succeed as you navigate the Social Work Program and develop the skills and confidence throughout your journey



Professional Development

We can help you with all inquiries regarding resume building, filling out applications, interview preparation, career planning, skill development, and networking opportunities



Community Building

We strive to create an inclusive and welcoming environment where students can build meaningful connections with their peers through social events, meet & greets, and collaborative learning experiences





**BACHELOR STUDENT OF
SOCIAL WORK ASSOCIATION**

ENCHILADA PLATE SALE



DATE: MARCH 7TH



DELIVERY TIME : 11:00AM - 1:00PM

**ORDER FROM YOUR LOCAL BSSWA MEMBER
OR EMAIL NMSU.BSSWA@GMAIL.COM**



PIATES FOR 10\$



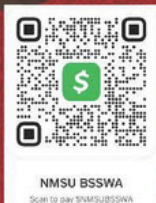
RED OR GREEN



SIDE OF RICE AND BEANS



A SOFT ROLL



NMSU BSSWA
Scan to pay \$NMSUBSSWA



BSSWA at NMSU
@nmsu_bsswa

venmo



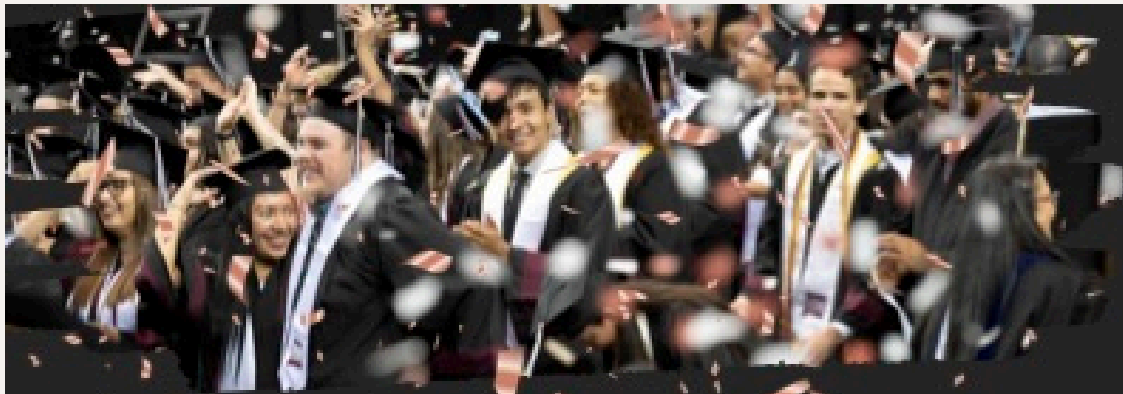
The Social Buzz



socialwork.nmsu.edu 7



For Las Cruces Main Campus



*New Mexico State University
School Of Social Work
Pinning & Hooding Ceremony*

RSVP

*May 10th, 2025
Time: 4 PM*



*ASNMSU Center
for the Arts*

Congratulations Graduates of 2025!!

RSVP:

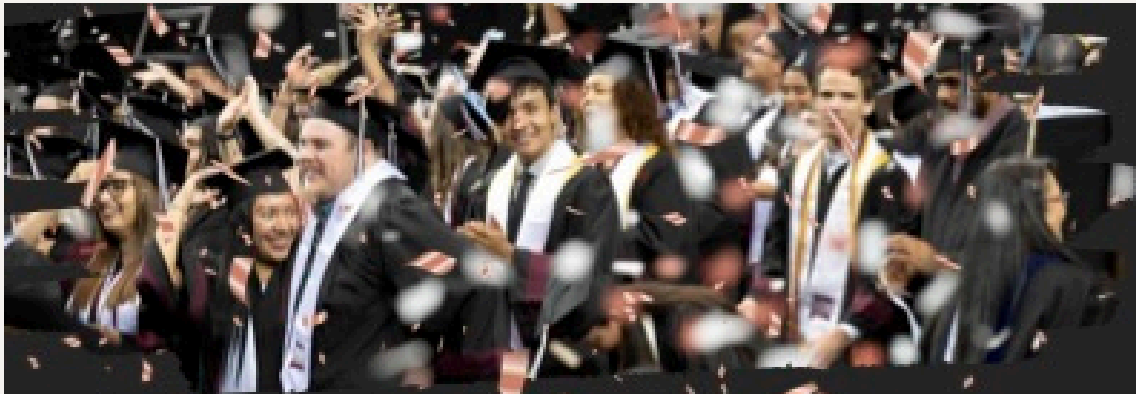
<https://forms.office.com/r/NbvqubGV9c>

Please RSVP by: 3/15/2025





For Global Campus



*New Mexico State University
School Of Social Work
Pinning & Hooding Ceremony*

RSVP

*May 8th, 2025
Time: 6 PM*



Zoom Link:

Congratulations Graduates of 2025!!

RSVP:

<https://forms.office.com/r/zneQSA4CXZ>

Please RSVP by: 3/15/2025





MANDATORY ORIENTATION FOR PRACTICUM STUDENTS ELIGIBLE TO BE IN FALL/SPRING 2025-26 PRACTICUM PLACEMENTS

Welcome incoming Practicum Students,
We are reaching out to invite you to attend a mandatory orientation for your upcoming practicum placement for Fall/Spring 2025-26. This orientation is a crucial step in ensuring that you are prepared for your practicum and able to move forward with the placement process.

During the orientation, we will cover important details, including:

- Instructions for purchasing Tevera, the platform used for practicum management
- The process to begin your practicum placement
- Information about your practicum coordinator

Please note that attendance is required in order to gain access to NMSU's full list of approved practicum agencies. Without attending an orientation session, you will not be able to proceed with securing your placement for Fall 2025.

If you are unable to attend the scheduled orientation, please contact me as soon as possible to discuss alternate arrangements. Failure to attend could delay or hinder your ability to obtain a practicum placement.

Please register for only one orientation, by clicking the zoom link below and according to BSW or MSW.

BSW Orientations

- March 6, 2025 6pm <https://nmsu.zoom.us/meeting/register/nVhr90xoTN2IVjHvhlwvdvQ>
- March 7, 2025 noon <https://nmsu.zoom.us/meeting/register/q7oI9Rs7SliyyC2aSBMiVA>
- March 21, 2025 Noon <https://nmsu.zoom.us/meeting/register/ZH94nIoZQZeE8pIFqGHijA>

MSW Orientations

- March 4, 2025 6pm <https://nmsu.zoom.us/meeting/register/B676jxkbSO2q80TvNkvC2Q>
- March 7, 2025 1pm <https://nmsu.zoom.us/meeting/register/t005ys-ySBywf2GZLzyelA>
- March 21, 2025 1pm <https://nmsu.zoom.us/meeting/register/TADV9R7gQZelxQOzk4-r2g>

We look forward to your participation in the orientation and are here to assist with any questions you may have.

Kind regards, Practicum Team

Maribel Tellez

Practicum Director

Tellezm@nmsu.edu

Mallory Nunez

Practicum Coordinator

MSW Online Students

mdnunez@nmsu.edu

Susie Facio

Practicum Coordinator

BSW Students

sfacio@nmsu.edu

Ted Nieto

Practicum Coordinator

MSW Campus Students

tnieto@nmsu.edu





Collective Support Gathering

for Difficult Times

Facilitated by NMSU Social Work Faculty Megan Finno-Velasquez

All NMSU Social Work students, faculty, and staff are welcome

Tuesday, March 18 + April 15

4:00 - 5:00 PM

via Zoom

<https://nmsu.zoom.us/j/89690110499>

It is more important than ever to carve out time to care for ourselves and our social work community. Join us for a monthly supportive gathering designed to help process our emotions and reactions to recent and ongoing world events.

During our time together, we will:

- Discuss a range of normal emotions and reactions to the environment
- Practice mindfulness-based somatic exercises to support grounding and safety
- Process emotions in a safe, supportive environment
- Find mutual support and connection

Let's come together to support one another as we navigate these challenging times.





State of New Mexico Higher Education Department (NMHED) Graduate Scholarship

The New Mexico Higher Education Department (NMHED) offers Graduate Scholarship for underrepresented groups who are citizens or permanent U.S. residents.

NMHED Graduate Scholarship carry up to \$7,200 per annum. Students must serve in an unpaid internship or assistantship at an eligible institution, a government agency, or private industry approved by the major department for ten hours per week during the academic year. NMHED Graduate Scholarships are available for two years for master's students and for four years for doctoral students.

Priority will be given to New Mexico students from those groups with the most severe under-representation and students with the greatest financial need.

To establish financial need, students must complete the Free Application for Federal Student Aid (FAFSA) form at <https://studentaid.gov/>. Please include NMSU School code 002657. The results will be sent to the student and the NMSU Financial Aid Office.

Students must have a complete file and must be approved for financial aid to be considered for this scholarship.

Nomination form must be submitted by department heads or graduate program directors and can be found here: State of New Mexico Higher Education Department (NMHED) Graduate Scholarship.





Student Spotlight

We want to celebrate the incredible achievements and talents of our students! Whether it's for academic excellence, leadership, creativity, or any other noteworthy accomplishment, we'd love to hear about it. Students are welcome to self-nominate, or you can nominate a fellow student who deserves recognition. Please submit your nominations through the form below and help us spotlight the outstanding individuals in our community!



STAY CONNECTED

Exciting News for Our Social Work Community! We've launched a new Careers & Opportunities webpage dedicated to connecting you with meaningful job openings. From roles within NMSU to opportunities in the broader community, this page is designed to help you find positions that align with your passion and expertise. Visit the page to explore the latest listings and take the next step in your career!



CLICK HERE



BUZZ IN NEXT WEEK

Stay tuned for the latest updates, stories, and highlights from the School of Social Work!

In next week's edition, we'll bring you:

- Spotlights on Recent Achievements
- Upcoming Events and Workshops
- Student and Faculty Features
- Useful Resources and Tips

Got something to share or a question to ask?

Feel free to reach out to us:

✉ mkeeper@nmsu.edu

☎ Phone: 575-646-7599

🏢 Office: HSS 210F

We'd love to hear from you and feature your news in our next issue!

