

# The Social Buzz

## School of Social Work

**April 9- April 15, 2025**

### MESSAGE FROM DIRECTOR

A couple of weeks ago I had the pleasure of attending the HEST Scholarship award luncheon. SEVERAL of our students, Aubrey Caballero, Sara Hipps, Samara Nunez, Graciela Olague Lesle Esparza Villalpando joined me to be honored by the College and funders for all of their achievements. And then last week we were able to award nearly \$200,000 in stipends for students completing their practicums. In the next coming weeks we will award another \$50,000 in scholarships. I share all of this with you to demonstrate our School's commitment to helping students succeed without undue financial pressures. The Buzz is a great source of information about scholarships, stipends, and other programs offering financial support. Make sure to check it out each week to find out about the latest opportunities.



*Mary Nienow*

Dr. Mary Nienow, Director





**As we near the end of the semester, we are launching a Faculty Recognition program. If there is an instructor who has helped you during your time at NMSU, consider nominating them for this honor.**

**Please scan the QR code below to vote!**

## Outstanding Faculty Recognition Form





# Join Our *Team*



**BE BOLD. Shape the Future.®**  
**School of Social Work**

## Academic Advisor, Lead

**LOCATION: LAS CRUCES, NEW MEXICO (IN- PERSON POSITION)**

The School of Social Work at New Mexico State University is hiring a Lead Academic Advisor. This full-time position is responsible for providing academic advisement, evaluating transcripts, assisting with curriculum planning, and supporting recruitment and retention efforts for Bachelor of Social Work (BSW) and Master of Social Work (MSW) programs.

### KEY RESPONSIBILITIES

- Advise prospective, current, and former students.
- Review transcripts and transfer credits.
- Support student retention and success initiatives.
- Participate in recruitment and orientation activities.

### REQUIRED QUALIFICATIONS

- Bachelor's degree in a related field.
- 3 years of relevant experience.
- Strong communication and organizational skills.



### HOW TO APPLY?

For a complete job description and to apply, visit:

[Apply Here](#)

For inquiries, contact Sherry Cain at [sherryac@nmsu.edu](mailto:sherryac@nmsu.edu).

**Apply Now**



NEW MEXICO STATE UNIVERSITY IS AN EQUAL OPPORTUNITY EMPLOYER.







¡VAMOS  
A JUGAR!

**\$10**  
donation

**DRAG  
LOTERIA**

APRIL 10TH 2025  
6PM-8PM  
@PETE'S PATIO

LIVE PERFORMANCE!  
GAME PRIZES!  
SILENT AUCTION!

PRESENTED BY  
BACHELOR  
STUDENT OF  
SOCIAL WORK  
ASSOCIATION

AMISTAD EL CORAZON LA ROSA





## Dear Faculty, Staff, Students, Alumni, and Friends of the College of HEST,

I am so honored to step in as interim dean at a time when our college is making great strides in education, research, and community engagement. It is a privilege to work alongside the HEST community to prepare for a new permanent dean and to continue the vital mission of our college.

Your dedication to educating future leaders, advancing knowledge, and making a meaningful impact in our communities is truly inspiring. The work you do every day —whether teaching in the classroom or online, in research and scholarship, or through service and outreach—shapes lives and strengthens the future of our disciplines. As we move forward together, my goal is to support your efforts, continue to foster collaboration, and ensure that we end the academic year on a strong and positive note.

I look forward to connecting with you in the coming weeks and hope to see you at our various graduation ceremonies. Thank you for your commitment, passion, and the difference you make at NMSU and in our communities.

Wishing you all continued success.

***Warm regards,  
Alexa Doig***





BSW and MSW Students!

The School of Social Work is hiring 3 College Assistant Professors and your input is VALUABLE! Join us for the student interviews of the finalists on the following dates and times:

**Monday, April 14th at 9:00 a.m.**  
**Interviewee: Nikki DeSimone**

**Tuesday, April 15th at 4:00 p.m.**  
**Interviewee: Tasha Guerrero**

**Thursday, April 24th at 4:00 p.m.**  
**Interviewee: Marisa Gonzalez**

**Monday, April 28th at 4:00 p.m.**  
**Interviewee: Amanda Ortiz**

**Tuesday, April 29th at 4:00 p.m.**  
**Interviewee: Angelina Valdespino**

**Here is the zoom link:**

**<https://nmsu.zoom.us/j/4423658548>**







# 1ST GEN/LIMITED INCOME STUDENTS

SUBMIT AN APPLICATION TO THE

## *McNair Scholars Program*



Conduct  
**research** within  
your major.

**Travel**  
and **present** at  
conferences.

Help with  
**PhD/Graduate  
School  
applications.**

Graduate with  
**honors!**

**FOR COMPLETE  
DETAILS SCAN**



**OR VISIT  
NMSU.LINK/MCNAIR**

**APPLICATION  
REVIEW BEGINS  
ARIL 15**





**ALBUQUERQUE MSW SOCIAL - SPRING '25**  
**2381 AZTEC NE, ALBUQUERQUE, NM 87107**  
**FRIDAY 4.25.25 5:00-7:00P**



**EMAIL RSVP OR QUESTIONS TO ANNA OR SEAN**  
**HORNER@NMSU.EDU OR SEANPAUL@NMSU.EDU**

**Hello fellow MSWs!**

**Announcing a Spring Abq-Based Social! Basically, a couple of hours to get together with NMSU MSWs and build a lil growing community amongst us. Please join for our third ABQ-Based MSW Social on Friday, April 25th at Canteen Brewhouse (2381 Aztec Rd NE) from 5:00pm - 7:00pm.**

**We'll send another reminder the week of and the day before! Hope to see you all there!**

**Warmly,  
Anna Horner and Sean Cardinalli**







# JOIN OUR TEAM DISCOVERY SCHOLARS PROGRAM

---

## WHO:

- A&S AND HEST MAJORS

## WHAT:

- APPLY TO WORK WITH A FACULTY MENTOR ON A RESEARCH PROJECT & A PROFESSIONAL DEVELOPMENT PROJECT
- GAIN VALUABLE SKILLS

## LEARN MORE HERE:



APPLY HERE BY MAY 2ND





## MANDATORY ORIENTATION FOR PRACTICUM STUDENTS ELIGIBLE TO BE IN FALL/SPRING 2025-26 PRACTICUM PLACEMENTS

### Welcome Incoming SSW Practicum Students,

We are reaching out to invite you to attend a mandatory orientation for your upcoming practicum placement for Fall/Spring 2025-26. This orientation is a crucial step in ensuring that you are prepared for your practicum and able to move forward with the placement process.

During the orientation, we will cover important details, including:

- Instructions for purchasing Tevera, the platform used for practicum management
- The process to begin your practicum placement
- Information about your practicum coordinator

Please note that attendance is required in order to gain access to NMSU's full list of approved practicum agencies. Without attending an orientation session, you will not be able to proceed with securing your placement for Fall 2025.

If you are unable to attend the scheduled orientation, please contact me as soon as possible to discuss alternate arrangements. Failure to attend could delay or hinder your ability to obtain a practicum placement.

Please register for only one orientation, by clicking the zoom link below and according to BSW or MSW.

### MSW

Friday 4/11/2025 12pm <https://nmsu.zoom.us/meeting/register/sC24VOmVRCqCV86H8jyvvhQ>

We look forward to your participation in the orientation and are here to assist with any questions you may have.

#### Practicum Team

Maribel Tellez

Practicum Director

[Tellezm@nmsu.edu](mailto:Tellezm@nmsu.edu)

Mallory Nunez

Practicum Coordinator

MSW Online Students

[mdnunez@nmsu.edu](mailto:mdnunez@nmsu.edu)

Susie Facio

Practicum Coordinator

BSW Students

[sfacio@nmsu.edu](mailto:sfacio@nmsu.edu)

Ted Nieto

Practicum Coordinator

MSW Campus Students

[tnieto@nmsu.edu](mailto:tnieto@nmsu.edu)





## Fellowship Program

At the core of **El Puente de Encuentros** programming is the annual Fellowship Program which aims to support and cultivate leadership skills of culturally and linguistically diverse graduate and undergraduate students pursuing careers in the behavioral health field. Fellowship students are paired with seasoned behavioral health practitioners who will serve as mentors to the students throughout the Fellowship. By fostering professional relationships between BIPOC students and mentors who have had shared experiences, we hope to expand the future base of culturally and linguistically diverse behavioral health providers in NM by connecting, engaging, and supporting them through their studies and as they prepare to enter the workforce.

In order to be eligible for acceptance into the program, students must meet the following criteria:

- Identify as a member of a culturally and/or linguistically diverse community
- Be able to attend two seminars/month (2 hours/seminar) over the course of the two semesters of
- the school year.
- Be enrolled as a degree-seeking junior, senior or graduate student by the Fall semester.
- Have a cumulative GPA of 3.0 or better

### **Are you interested in a profession in the Mental/Behavioral Health field?**

El Puente de Encuentros offers an innovative fellowship program designed to prepare undergraduate and graduate students through mentoring, seminars, and research. Applications for the 2025/2026 fellowship are now open through July 1, 2025.

### **Apply Here**

### **Are you interested in becoming a mentor for the fellowship program?**

Fellowship students are paired up with seasoned behavioral health practitioners who serve as mentors to the students throughout the fellowship year. By fostering professional relationships between BIPOC students and mentors who have had shared experiences, we hope to expand the future base of culturally and linguistically diverse behavioral health providers in NM by connecting, engaging, and supporting them through their studies and as they prepare to enter the workforce.

### **Apply Today**







## FINANCIAL SUPPORT!

### EOP Short-Term Urban Project

Urban funding to support New Mexico School-Based Mental Health graduate students in Albuquerque, Santa Fe, and Las Cruces is back! Qualified fields of study include social work, counseling, psychology, and applied behavior analysis. Licensure Reimbursement up to \$300 is also available for graduate students who have successfully obtained a license in social work, counseling, psychology, or applied behavior analysis within the past year.

Applications for the Urban EOP Academic Support, Practicum/Internship, and Licensure Reimbursement Stipends will open on March 3, 2025. Funding is limited and first come first served to qualified applicants. Applications will remain open until funding runs out or August 29, 2025 (whichever comes sooner).

EOP participants who have received rural funding and attested to work in a rural school are not eligible for urban funding.

For more information and to apply please visit the [NMEOP Urban Project Website](#).





## Student Spotlight

We want to celebrate the incredible achievements and talents of our students! Whether it's for academic excellence, leadership, creativity, or any other noteworthy accomplishment, we'd love to hear about it. Students are welcome to self-nominate, or you can nominate a fellow student who deserves recognition. Please submit your nominations through the form below and help us spotlight the outstanding individuals in our community!





## Need Help with Academic Advising or Registration? We're Here to Support You!

Whether you're navigating program requirements, course scheduling, financial aid, transfer credits, or graduation, we've got you covered! [Fill out our support form](#) to get assistance!

### What can we help with?

- Academic Advising
- Program Requirements
- Registration & Enrollment
- Financial Aid
- Course Scheduling
- Transfer Credits
- Graduation Requirements
- and much more!



Thank you for submitting your inquiry! One of our team members will get back to you soon with the support you need. In the meantime, if you need immediate help, you can reach out to one of our key contacts:

- **BSW Program Coordinator:** Professor Paulina Palomino Pantoja - paulinam@nmsu.edu
- **MSW Program Coordinator:** Dr. Sterling Brown - shbrown@nmsu.edu
- **Practicum Director:** Professor Mari Tellez - tellezm@nmsu.edu
- 

We're here to help you succeed! Reach out anytime. 🌱







**Careers & Opportunities** webpage dedicated to connecting you with meaningful job openings. From roles within NMSU to opportunities in the broader community, this page is designed to help you find positions that align with your passion and expertise. Visit the page to explore the latest listings and take the next step in your career!



## Career Listings

### Internal Opportunities (NMSU)

1. Please visit [NMSU's Career Website](#)
2. [Extension District/State Specialist/Behavioral Health, Cooperative Extension Service](#)
3. [Lead Academic Advisor, School of Social Work](#)

### External Opportunities (Community)

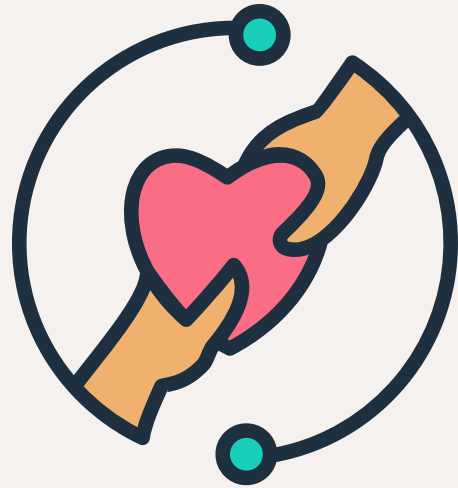
1. The State of NM, Office of the Governor
  1. [Department of Finance & Administration–Project Manager: Prevention and Emergency Response Initiatives](#)
  2. [Department of Finance & Administration–Project Manager: Youth and Family Initiatives](#)
  3. [Executive Director for New Mexico Chapter of NASW](#)
  4. [Eight \(8\) Northern Indian Pueblo Council Career Opportunities](#)
  5. [ENIPC, INC. Behavioral Health Services](#)
    1. Therapist
    2. Clinical Supervisors
  6. [Contract Social Worker: University of New Mexico of Law Clinic](#)
  7. [Program Coordinator, Southwest Behavioral & Health Services](#)

**Careers & Opportunities**



# CONNECT WITH US

## School of Social Work Website



## Facebook



## Instagram



Stay tuned for the latest updates, stories, and highlights from the School of Social Work!

In next week's edition, we'll bring you:

- Spotlights on Recent Achievements
- Upcoming Events and Workshops
- Student and Faculty Features
- Useful Resources and Tips

Got something to share or a question to ask?

Feel free to reach out to us:

✉ [mkeeper@nmsu.edu](mailto:mkeeper@nmsu.edu)

☎ Phone: 575-646-7599

🏢 Office: HSS 210F

We'd love to hear from you and feature your news in our next issue!

