



The Social Buzz



School of Social Work

September 25- October 1, 2025



The Social Buzz



socialwork.nmsu.edu 1



MESSAGE FROM THE DIRECTOR

Dear Social Work Students,

I want to address the recent hateful protests occurring on our campus and provide you with important safety information and resources during this challenging time. Your physical and emotional safety is my top priority. If possible, please avoid areas where hateful speech and demonstrations are occurring. If you have questions or need support, please contact me, any faculty or staff member, or our Peer Mentors.

Support Resources Available on Campus

Remember that our [American Indian Program](#) (AIP), [Asian Pacific Islander Program](#) (API), [Black Programs](#) (BP), [Latin American Programs](#) (LAP), and [Lesbian, Gay, Bisexual, Transgender Plus Programs](#) (LGBT+) are committed to fostering inclusion, belonging, and respect. If you witness or experience harassment, you are not alone. ALL of our spaces are open and here for you, and we have mental health resources and rest areas available for all students.

If you are struggling and/or need assistance and resources, please contact the [Concern Assessment and Response \(CARE\) Team](#).

You also have the right to report incidents that cause distress to your well-being by submitting a [report online](#) or contacting the Office of the Dean of Students at 575-646-1722 to speak with a staff member.

Know Your Rights

As future social workers, it's essential to understand your rights regarding peaceful expression:

- You have the right to express your views and make your voice heard peacefully
- Public universities must respect First Amendment rights
- You have the right to remain silent if approached by law enforcement
- You can request legal representation if detained

For more detailed information about your rights when protesting, visit the [ACLU New Mexico](#) and [ACLU Student Rights](#) resources.

Final Thoughts

As social work students, you understand the importance of standing against hatred and discrimination while prioritizing safety and self-care. Your voices matter, and there are many ways to create positive change. Please remember that peaceful protest is powerful protest, and your safety comes first.

Dr. Mary Nienow, Director





ADDITIONAL RESOURCES

If You Choose to Engage in Peaceful Counter-Protest

Should you decide to participate in peaceful counter-demonstrations, please prioritize your safety:

Before You Go:

- Tell someone your plan: where you're going, how you'll get there, when you'll return
- Charge your phone and bring a battery pack
- Bring water, medications, and cash
- Write emergency contacts on your body (don't rely on your phone)
- Plan multiple routes in and out of the area

During Any Demonstration:

- Keep protests peaceful and non-violent
- Stay in groups—there's safety in numbers
- Maintain awareness of your surroundings
- Don't engage with agitators—walk away instead
- Stay calm and keep your voice steady
- Don't resist arrest or escalate situations

What NOT to Bring:

- Anything that could be seen as a weapon
- Contact lenses (can trap tear gas)
- Valuable items you can't afford to lose

You can use this [WIRED safety guide](#) for more safety tips.

Alternative Ways to Support

If you cannot or choose not to attend demonstrations, there are other meaningful ways to support causes you believe in. The [New Roots Institute](#) offers excellent resources for alternative forms of support and advocacy.





In This Issue



SCHOOL OF SOCIAL WORK

<u>BSSWA Announcement</u>	5
<u>Anuncio de BSSWA</u>	6
<u>Andres Uribe ASNMSU</u>	7
<u>SW Listening Session</u>	8
<u>Faculty New Release</u>	9

NMSU ANNOUNCEMENTS

<u>Scholarship Opportunity</u>	10
<u>Required Training For Students</u>	11

SOCIAL WORK

<u>SW Faculty Recognition</u>	12
<u>SW Student Peer Support</u>	13
<u>Peer Support Office Hours</u>	14
<u>Careers And Opportunities</u>	15
<u>Connect With Us</u>	16





JOIN US!

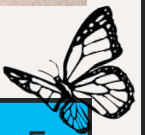
BSSWA'S

September Meeting

September 25

6:00 PM

Health and Human Services Building,
Room 219





ACOMP AÑANOS!

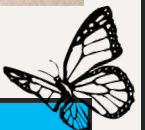
BSSWA'S

Junta de Septiembre

25 de Septiembre

6:00 PM

Edificio: Health and Human Services
Building,
Room, 219





SCHOOL OF SOCIAL WORK

MESSAGE FROM ANDRES URIBE

Andres Uribe (One of our Social Work Students) is rerunning for the ASNMSU Senate to represent the college of HEST.

I am reaching out to ask for your assistance getting the word out about elections, specifically assistance connecting with our all of our BSW students to complete the nomination form (which closes Wednesday, September 24th, at 5:00PM).

It has been an honor to serve as the only social work student in the ASNMSU Senate and Vice Chair of the Senate's Credential and Archives Committee; however, there is still much work to do! There is still funding to be secured for our HEST and social work student organizations, revive the Senate's Special Committee on Education, and identify and mentor upcoming social work students interested in running for Senate.



To Access the
Nomination Form

ASNMSU Fall 2025 Election Nomination Form

This form is simply to nominate an individual to be an official candidate in the Fall 2025 Senate Election, this is **not** voting in the Election. Elections will take place 10/20/25 - 10/24/25.

Please Note: You are able to submit as many nominations as seats available in your primary college.

- Agriculture, Consumer & Environmental Sciences: 1 seat available
- Arts & Sciences: 4 seats available
- Business: 2 seats available
- Engineering: 2 seats available
- Graduate: 2 seats available
- Health, Education, & Social Transformation: 4 seats available

GUIDE

* Name: (1) YOUR NAME

Your Name

* College:

- ☐ Agricultural, Consumer and Environmental Sciences (ACES)
- ☐ Arts and Sciences
- ☐ Business
- ☐ Engineering
- ☐ Graduate

☒ Health, Education, and Social Transformation (HEST) (2) YOUR COLLEGE

* NMSU Email: (3) YOUR EMAIL

youremail@nmsu.edu

* Nomination (please ensure name is spelled correctly): (4) MY NAME, SPELLED "Andres Uribe"

Andres Uribe

NEXT

(5) CLICK
"NEXT"

[← BACK TO SUBMISSIONS](#)

Review Submission

If you have reviewed and completed the necessary steps below, please submit your Form for approval. To visit sections you have not reviewed or completed, please click on the step immediately preceding where you left off in order to continue through the remainder of the Form.

Submission



In Progress

ASNMSU Fall 2025 Election Nomination Form

1. ASNMSU Fall 2025 Election Nomination Form

→ Page 1 ASNMSU Fall 2025 Election Nomination Form

SUBMIT

(6) CLICK "SUBMIT"

THANK YOU!
-Andrés U.



The Social Buzz



socialwork.nmsu.edu 7





**Social Work Students: Your Voice
Matters!**

Listening Session

**Come share your voice and discuss opportunities to
advocate for change in the School of Social Work!**

Scan the QR code to join our Zoom!

Zoom link:

<https://nmsu.zoom.us/j/8643038801>

CLICK HERE



**Tuesday, Oct.
7th, 2025**

**6:00 pm -
7:00 pm**





New Mexico State University **News Release**



Marisa Gonzalez, assistant professor in the School of Social Work at New Mexico State University, has been selected for the prestigious Fulbright U.S. Scholar award.

Gonzalez, who is also pursuing a Ph.D. in social work at Colorado State University, will spend 10 months at Dalat University in Vietnam during the 2025-26 academic year.

At Dalat University, Gonzalez will support the NMSU School of Social Work's undergraduate internship program while conducting dissertation research on international academic collaborations. Her project, "Social Work Education: Enhancing Policy and Practicum through International Collaboration," will explore how U.S. academic social work partnerships are perceived by host institutions abroad with the goal of advancing mutually beneficial and culturally responsive collaborations in higher education. The NMSU School of Social Work is housed in the College of Health, Education and Social Transformation.

The full article can be seen at:

<https://newsroom.nmsu.edu/news/nmsu-college-of-health-assistant-professor-awarded-fulbright-to-vietnam/s/178cbcf3-89c2-4423-adaf-aa9bcba14cfb>





NMSU

Scholarship Opportunity!!!!

Live Your Dream Award application due Nov. 15

Undergraduate female students who are the primary wage earner/source of financial support for their families (including children, spouse, siblings and/or parents) are encouraged to apply for the Live Your Dream Award given by Soroptimist International of Las Cruces. Soroptimist International is a civic organization that seeks to improve the lives of women and girls through education and economic empowerment.

To be eligible, students must have at least one person besides themselves that they are financially supporting. Students from the Las Cruces campus as well as branch campuses may apply.

The award can be used for tuition, books, transportation, childcare or any expense associated with attaining an undergraduate degree. Nine awards ranging from \$1,500-\$2,500 will be given. The local winner will then be eligible for awards of up to \$5,000 at the district level and \$10,000 at the national level.

Applications are available at <https://www.soroptimist.org/our-work/live-your-dream-awards/apply-for-the-live-your-dream-awards.html>. The application form and reference form must be submitted by 11:59 p.m. on Nov. 15.

For more information, please contact Dr. Esther Devall at edevall@nmsu.edu or 575-642-3322.



The Social Buzz



socialwork.nmsu.edu 10





COMPLETE RESPECTEDU FOR COLLEGE TRAINING BY OCT. 24

ALL NMSU STUDENTS MUST
FULFILL THIS IMPORTANT
REQUIREMENT

This one-time requirement
covers key topics such as **Title
IX** and the Clery Act.

STUDENTS WHO MISS THE
DEADLINE WILL HAVE A HOLD
PLACED ON THEIR ACCOUNT,
BLOCKING SPRING 2026 CLASS
REGISTRATION

DON'T MISS THE DEADLINE!

**Check Your Email for
"Vector Training"**





SW FACULTY RECOGNITION

Welcome back students! Last Spring we launched a **Faculty Recognition program**. We are excited to continue recognizing faculty this year. If there is an instructor/advisor/administrator who has helped you during your time at NMSU, consider nominating them for this honor. Please scan the QR code or click link below to vote!

CLICK HERE

Outstanding Faculty Recognition Form





SW STUDENT PEER SUPPORT

How SW Student Peer Support can Help!



Emotional Support

With the most current events and changes, we are here to listen to your concerns, provide a safe space for all thoughts and feelings, and offer coping strategies. You are not alone, and we are in this together!



Academic Support

We are students too, and we want to share our knowledge and tips to help you all succeed as you navigate the Social Work Program and develop the skills and confidence throughout your journey



Professional Development

We can help you with all inquiries regarding resume building, filling out applications, interview preparation, career planning, skill development, and networking opportunities



Community Building

We strive to create an inclusive and welcoming environment where students can build meaningful connections with their peers through social events, meet & greets, and collaborative learning experiences



Scan here to make an appointment with us:

We hope to connect with you!





OFFICE HOURS

Monday
5 PM - 7 PM

Tuesday
7 AM - 9 AM / 5 PM - 8 PM

Wednesday
7 AM - 9 AM

Thursday
7 AM - 9 AM / 5 PM - 8 PM

Friday
7 AM - 9 AM / 1 PM - 7 PM

Can't meet at these times? Schedule
an appointment using our QR code!

Office Location:

HSS Building, 2nd floor, room 201

Zoom Link:

[https://nmsu.zoom.us/j/831912592
21#success](https://nmsu.zoom.us/j/83191259221#success)



nmsu_socialworkpeersupport





SW CAREERS AND OPPORTUNITIES

Careers & Opportunities webpage dedicated to connecting you with meaningful job openings. From roles within NMSU to opportunities in the broader community, this page is designed to help you find positions that align with your passion and expertise. Visit the page to explore the latest listings and take the next step in your career!

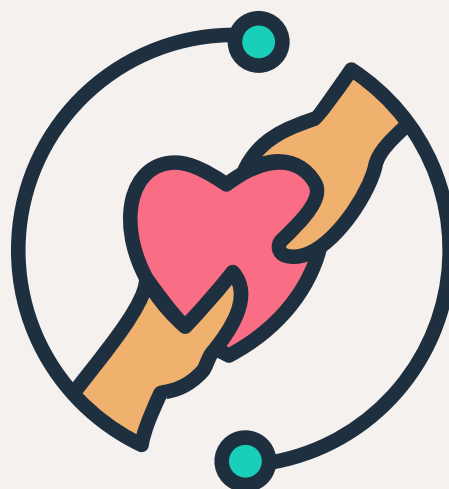


Careers & Opportunities



CONNECT WITH US

School of Social Work Website



Facebook



Instagram



Stay tuned for the latest updates, stories, and highlights from the School of Social Work!

In next week's edition, we'll bring you:

- Spotlights on Recent Achievements
- Upcoming Events and Workshops
- Student and Faculty Features
- Useful Resources and Tips

Got something to share or a question to ask?

Feel free to reach out to us:

✉ socwork@nmsu.edu

☎ Phone: 575-646-2143

🏢 Office: HSS 210

We'd love to hear from you and feature your news in our next issue!

