



# The Social Buzz



## School of Social Work

**September 18- September 24, 2025**

### MESSAGE FROM DIRECTOR



Did you know September is Suicide Prevention Month? As someone who has lost a loved one to suicide, it is especially important to me that we raise awareness of those who struggle with suicidal ideation. If you or someone you know is struggling, there is a national hotline you can call or text for support: 988. Chat features are also available at [988lifeline.org](https://988lifeline.org). 988 is also available for overall mental health and substance use support.

While we strive to honor Latine Heritage all year round in the School of Social Work, this week officially begins Latine Heritage Month which goes from September 15-October 15. A number of programs are being offered by the Latin American Programs...check it out at:

<https://latinamericanprograms.nmsu.edu/>

Last week I had the absolute pleasure of leading our School of Social Work Faculty and Staff Retreat. We had a blast, from "Two Truths and a Lie-Self-Care-Edition", mindfulness exercises, to deep conversations about our strategic plan and how we best serve our students. One thing was clear, student success is the top priority for all of us and more student voices and input are critical to growing and improving our already great programs.

We hope you will join us for future Student Town Halls, Listening Sessions and serving on faculty committees and other representative bodies. If you are interested in getting involved in creating a supportive and responsive School of Social Work, please reach out to me directly: [mnienow@nmsu.edu](mailto:mnienow@nmsu.edu)

Dr. Mary Nienow, Director

Hope you are having a great week!



**The Social Buzz**



[socialwork.nmsu.edu](https://socialwork.nmsu.edu) 1



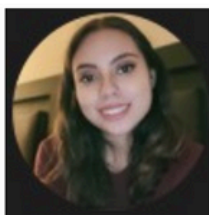
# CONGRATULATIONS, FELLOWS!

2025-2026

## Presenting our 2025-2026 DSJ Fellows!

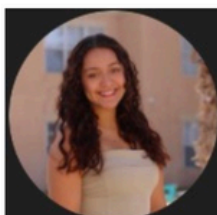
The Diversity and Social Justice Committee is excited to announce our inaugural DSJ Fellowship recipients! After a competitive selection process, we've selected three outstanding students who will work collaboratively with faculty mentors to advance social justice through academic scholarship and action-oriented projects. We look forward to their contributions to the school and the wider community.

**Chelsea Alcantara—Advanced Generalist, MSW Global**



Chelsea would like to explore how families influence access and success in higher education for first-generation students from underrepresented communities, with focus on advocacy and policy work.

**Abigail Macias—BSW Senior (on-campus)**



Abby aims to create a digital exhibit or showcase that uplifts voices from marginalized backgrounds through collected stories, culminating in a public presentation or online display.

**Shane Caballero—BSW Junior (on-campus)**



Shane is interested in developing a community engagement initiative or advocacy campaign examining anti-racism approaches in macro-level social work practice.

## A Message from the Chair

It is with great pride that we celebrate the incoming cohort of DSJ Fellows. These individuals represent the future of social work, and their dedication to uplifting marginalized populations and advocating for social justice is truly inspiring.





The DSJ Fellowship is designed to support emerging leaders who are committed to advancing the School of Social Work's mission. The Fellowship provides students with structured opportunities to apply their passion for equity and advocacy through collaborative projects, mentorship, and community engagement. Our review committee was deeply impressed by the caliber of applications and was energized with the student engagement and enthusiasm to learn and share in spaces of anti-racist work and social justice. These fellows embody the core values of our school and will undoubtedly make a significant impact on the communities they serve.

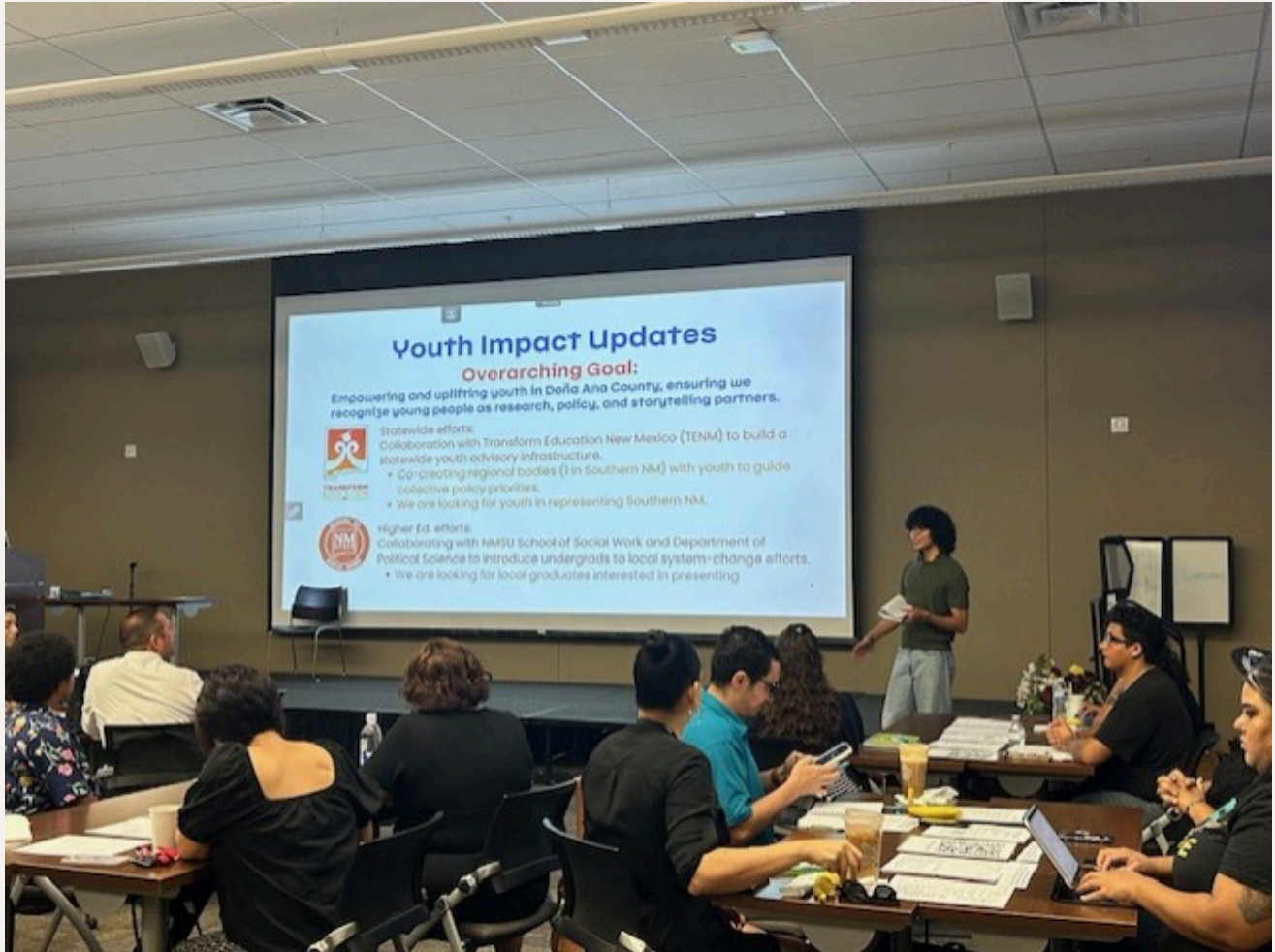
We are confident that Chelsea, Abby, and Shane will make significant contributions to the field of social work. We enthusiastically invite you to join us in congratulating them and supporting their endeavors.

*Angelina Valdespino*





# Check Out Andrés Uribe



Look at Andrés one of our Social Work students in action in his community. This is at the Kinder-Career Coalition meeting in his role as Youth Impact Strategist.







## New Mexico State University News Release



Marisa Gonzalez, assistant professor in the School of Social Work at New Mexico State University, has been selected for the prestigious Fulbright U.S. Scholar award.

Gonzalez, who is also pursuing a Ph.D. in social work at Colorado State University, will spend 10 months at Dalat University in Vietnam during the 2025-26 academic year.

At Dalat University, Gonzalez will support the NMSU School of Social Work's undergraduate internship program while conducting dissertation research on international academic collaborations. Her project, "Social Work Education: Enhancing Policy and Practicum through International Collaboration," will explore how U.S. academic social work partnerships are perceived by host institutions abroad with the goal of advancing mutually beneficial and culturally responsive collaborations in higher education. The NMSU School of Social Work is housed in the College of Health, Education and Social Transformation.

**The full article can be seen at:**

**<https://newsroom.nmsu.edu/news/nmsu-college-of-health-assistant-professor-awarded-fulbright-to-vietnam/s/178cbcf3-89c2-4423-adaf-aa9bcba14cfb>**





See us on International  
Mall near the Speech  
Building!  
September 19

1 PM-3 PM

\$5!

AQUA  
SALE  
FRESCA







# Reimagining Political + Social Work Education



**Join a student-led initiative reimagining political & social work education from a place-based lens!**

Through student-facilitated conversations with local collective impact and policy leaders to guided readings on political social work and critical pedagogy, undergraduate students will have an opportunity this fall to co-create a shared understanding of how to use education as a transformative tool for system-level change and leadership preparation.

What to expect:



## Benefits:

### Social Work Students:

Priority consideration for UConn's 2026 Campaign School of Social Workers funding

### Political Science Students:

*Extra credit* opportunities in select Fall 2025 courses (POLS 320-M71)

### Guided Reading

### Reflective Dialogue

### Guest Speakers

including...

### Johana Bencomo, MSW

NMSU Social Work/  
Government Alum &  
Las Cruces Mayor Pro Tem

### Collective Knowledge Building

**CLICK HERE!**

## Get Involved Today!

From September 22nd through October 31st be a critical partner in reimagining our education while networking with local change agents. Register by the priority deadline to be up to date on upcoming gatherings.

For questions or concerns, please contact this project's coordinator, Andrés Uribe, at [andresu2@nmsu.edu](mailto:andresu2@nmsu.edu).



**Priority deadline to register 09/19**





# Scholarship Opportunity!!!!



The NMSU Foundation's Grand in the Stands Scholarship Giveaways are back this fall, giving Aggie students a chance to win \$1,000 scholarships just for cheering on their teams.

Mark your calendar for 6 p.m. Wednesday, Sept. 17, as NMSU's volleyball team takes on the University of New Mexico in the Battle of I-25 at the Pan American Center, and 7 p.m. Thursday, Sept. 25, when Aggie women's soccer faces Delaware.

Full-time, main-campus undergraduates in good standing can enter by swiping their Aggie ID at the "Grand in the Stands" table. Students must be in their seats at half-time when the winner is announced. If your name is called, dash onto the court or field to claim your prize and photo.

Launched in 2018, Grand in the Stands was created to boost game attendance and expand scholarship opportunities for Aggies. Keep an eye out for more chances to win this year, and don't miss your shot at a grand in the stands! See <http://alwaysanaggie.org/a-grand-in-the-stands/> for details.







## PROFESSIONAL DEVELOPMENT SESSION

# Supporting Families of Children with Disabilities: What School Social Workers Need to Know

**Presented by:**

**Parents Reaching Out (PRO) New Mexico**

In partnership with Dr. Kimberly Knox and Dr. Stacy Gherardi, NMSU School of Social Work



**1.5 Social Work CEUs offered**



**October 17**

**2:00 - 3:30 PM (MT)**



**Online via Zoom**

**Register here to receive the Zoom link:**

[https://nmsu.zoom.us/meeting/register/w1iqOLKhSxeNXfqynZe\\_kQ](https://nmsu.zoom.us/meeting/register/w1iqOLKhSxeNXfqynZe_kQ)

**SIGN UP!**





Latin American  
Programs

# Latin Heritage MONTH 2025



## September

TUE  
16

Get Ready for Cumbia Night  
5:30-7:30 PM  
Corbett Lounge

THU  
18

Cumbia Night II: Live Concert!  
7:00 PM  
Pan American Center

MON  
22

Workshop: The Power of Performance  
by Paola Ramirez  
12:00-1:30 PM  
Corbett Auditorium

WED  
24

Ándale prieta! Author Talk by  
Jazmin Ramirez & Book Giveaway!  
5:30 PM  
Corbett Auditorium

WED  
01

Voces Latinoamericanas III  
11:00-12:00 PM  
Senate Chambers

THU  
9

Fascism in El Salvador: A Talk  
by Daniel Alvarenga  
12:00-1:30 PM via Zoom

FRI  
10

Culture Game Night: E-Sports  
Video Games  
6:00-7:30 PM  
E-Sports Lab

WED  
15

Nuestra Lucha: Luchador Guest  
Speaker: Cassandro, El Exótico  
& Food Truck "Luchador"  
12:00-1:00 PM  
Corbett Parking Lot



The Social Buzz



socialwork.nmsu.edu 10







ASNMSU, SILP &  
LATIN AMERICAN PROGRAMS  
PRESENTS:  
LATIN HERITAGE MONTH 2025  
**CUMBIA NIGHT II**  
PAN AMERICAN CENTER

**JACQUE RIVERA**

**09 | 18 | 7:00 PM**



**FREE TO NMSU STUDENTS**

**Tickets for sale to the public  
on Ticketmaster**



Latin American  
Programs



**The Social Buzz**



[socialwork.nmsu.edu](http://socialwork.nmsu.edu) 11






# Graduate Research Bootcamp


Boost your research skills  
and get ahead in your  
graduate studies!

Learn about:

- Library Services and Resources
- Advance Research Techniques
- Citation Management
- Systematic Searching



 October 3<sup>rd</sup> 10:00 am – 3:00pm

 Zuhl Library (Instruction lab)



**REGISTER**

**Register by scanning the QR code  
and secure your spot today!**



**BE BOLD. Shape the Future.<sup>®</sup>**  
NMSU Library



**The Social Buzz**



[socialwork.nmsu.edu](http://socialwork.nmsu.edu) 12







# New Mexico Behavioral Health Training Associates Presents

Basics and Beyond Series #3

## **Where Do We Go From Here? Collaborative Treatment Planning After Assessment**



Instructor: Michelle Ball, LCSW

Live Zoom Event

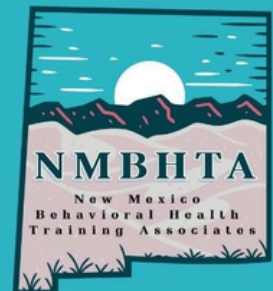
Friday 9/19/25 12:00-2:00 Mountain Time

2 CE credits

FREE

To register, go to <https://nmbhta.com>

Questions? Ask at [admin@nmbhta.com](mailto:admin@nmbhta.com)



Struggling to create treatment plans that are both effective and truly individualized? This training offers practical tools to make planning more collaborative, focused, and client-centered.

Michelle Ball, LCSW will guide you through the PLANS framework, how to write measurable goals using the PGOI format, and ways to tailor treatment plans to each client's unique context. Whether you're new to treatment planning or looking to refine your approach, this workshop will help you build plans that work in the real world.

By the end of this presentation, Learners will be able to:

- Identify key components and considerations in effective, collaborative treatment planning.
- Apply the PLANS framework to guide individualized planning.
- Construct measurable goals and objectives using the PGOI format.
- Integrate client context into the development of realistic treatment plans.



Michelle Ball is a Licensed Clinical Social Worker based in Albuquerque, New Mexico. She has worked in a wide variety of settings as a social worker including outpatient, inpatient, residential, homeless programs, disability services and educational sites as a case manager, clinician and clinical supervisor. Michelle has extensive experience in working with teenagers, individuals with substance use challenges, anxiety disorders, and those with trauma histories. Contact: [michelle.ball.lcsw@gmail.com](mailto:michelle.ball.lcsw@gmail.com)

NMBHTA is approved by the American Psychological Association to sponsor continuing education for psychologists. NMBHTA maintains responsibility for this program and its content. APA CE content is widely accepted by other behavioral health boards in New Mexico. Check with your board if you have any questions. There is no commercial support for this presentation.





We are seeking nominations for students to be considered for the 24th annual **St. Jude Children's Research Hospital National Graduate Student Symposium (NGSS)**. The NGSS is an exceptional academic and professional development opportunity for Ph.D. students and will be held March 24-27, 2026, on the St. Jude campus.

The NGSS is an all-expenses-paid symposium to which top Ph.D. students from around the country are invited to participate. To be eligible, students must be U.S. citizens or permanent residents, with an estimated graduation between April 2026 and July 2027. Preference will be given to students whose work is relevant to [ongoing research at St. Jude](#).

The NGSS is not advertised. Students may apply only if they are nominated by faculty. To nominate students, please visit [stjude.org/ngss](https://stjude.org/ngss) and complete a simple form. You may nominate multiple students, but **nominations must be received by October 16<sup>th</sup>, 2025**. We would appreciate it if you could forward this information to your Graduate Program Directors or other faculty members who may wish to nominate outstanding students.

Invitations to apply will be sent to students in late October. For those graduating before April 2026 who may be interested in postdoctoral fellowships at St. Jude, they may review [stjude.org/postdoc](https://stjude.org/postdoc) and our open positions: <https://talent.stjude.org/postdoc/jobs>.

For any questions contact [ngss@stjude.org](mailto:ngss@stjude.org).





## School of Social Work Reminders

### Social Work & Political Resistance: The Role of Social Work in Mutual Aid

September 18, 2025 | 6 p.m. – 7:30 p.m. ET | [Register](#)



As future social workers, you're stepping into the field during a time of deep social and systemic disruption. Mutual aid—communities coming together to meet each other's needs when institutions fail or cause harm—is a powerful tool for justice and care. But mutual aid isn't charity. It's about solidarity, challenging inequality, and building new ways of supporting one another outside of broken systems. This webinar invites you to explore how mutual aid, abolition, and transformative justice connect to social work values and practice. We'll unpack the question: Can the profession evolve to truly support radical change, or will it stay tied to systems that maintain the status quo? Learn how you can be part of shaping a more just and liberated future through your work and advocacy.

Presenter: Chris Fike, MS, LMSW-Macro. Region 5 Representative on the NASW-MI Board of Directors







## School of Social Work Reminders

# Join us to learn about the John S. McCain Strategic Defense Fellowship Program!



*The Department of Defense will host virtual information sessions for prospective applicants on the dates and times identified below. If you're interested in joining a session, please RSVP at*

**RSVP**

*<https://forms.osi.apps.mil/r/wtUATJswtr>.*

*To stay informed about this unique developmental program, please sign up for our mailing list at <https://forms.osi.apps.mil/r/DW09v2tU0j>.*

**SIGN UP**

Date	Time
Monday, September 22, 2025	3:00 pm – 4:30 pm ET
Tuesday, September 23, 2025	11:00 am – 12:30 pm ET
Wednesday, September 24, 2025	4:00 pm – 5:30 pm ET
Thursday, September 25, 2025	1:00 pm – 2:30 pm ET
Friday, September 26, 2025	11:00am – 12:30pm ET

Contact us at [whs.mccainfellows@mail.mil](mailto:whs.mccainfellows@mail.mil).



**The Social Buzz**



socialwork.nmsu.edu 16







## School of Social Work Reminders



# Substance Use Disorder, Addiction, Harm Reduction

VIRTUAL TRAINING PROVIDED BY  
**THE NATIONAL LATINO  
BEHAVIORAL HEALTH  
ASSOCIATION**

NO COST - BROUGHT TO YOU BY LC3

## 3 CEUS



RSVP REQUIRED - VIRTUAL ONLY

### VIRTUAL - ZOOM

SPOTS LIMITED - 3 CEUS

THURSDAY  
**SEP 23**  
9A-12P

RSVP AT  
[HTTPS://TINYURL.COM/LC3TR25](https://tinyurl.com/LC3TR25)  
OR SCAN QR CODE  
FREE VIRTUAL TRAINING  
SPOTS LIMITED

FOR MORE INFORMATION  
CONTACT JAVIER GUERRERO,  
ICS STRATEGIST AT  
JGUERRERO@FYINM.ORG



**The Social Buzz**



socialwork.nmsu.edu 17





# School of Social Work Reminders



## About the Training

### **SUBSTANCE USE DISORDER, ADDICTION, HARM REDUCTION**

THIS TRAINING PROVIDES AN IN-DEPTH LOOK AT SUBSTANCE USE DISORDER (SUD) AND ADDICTION THROUGH A CLINICAL, SOCIAL, AND COMMUNITY LENS. PARTICIPANTS WILL EXPLORE THE SCIENCE OF ADDICTION, THE IMPACT OF STIGMA, AND EVIDENCE-BASED STRATEGIES TO SUPPORT INDIVIDUALS AND FAMILIES. THE SESSION EMPHASIZES HARM REDUCTION APPROACHES, OFFERING PRACTICAL TOOLS AND INTERVENTIONS THAT PROMOTE SAFETY, HEALTH, AND RECOVERY WITHOUT JUDGMENT. DESIGNED FOR BEHAVIORAL HEALTH PROVIDERS, CASE MANAGERS, AND COMMUNITY PROFESSIONALS, THIS COURSE EQUIPS PARTICIPANTS WITH THE KNOWLEDGE AND SKILLS TO BETTER ENGAGE AND SUPPORT THOSE IMPACTED BY SUBSTANCE USE.

CEUS: 3

## About the Trainer



**DR. J ROCKY ROMERO, LMSW  
(HE, HIM)  
PROGRAM DIRECTOR  
NATIONAL LATINO BEHAVIORAL  
HEALTH ASSOCIATION (NLBHA)**

DR. J ROCKY ROMERO IS A SEASONED BEHAVIORAL HEALTH PROFESSIONAL WITH OVER TWO DECADES OF EXPERIENCE IN PROGRAM DEVELOPMENT, EVALUATION, AND TRAINING. HE IS CURRENTLY A PROGRAM DIRECTOR WITH THE NATIONAL LATINO BEHAVIORAL HEALTH ASSOCIATION (NLBHA) AND CEO OF JR ROMERO & ASSOCIATES. DR. ROMERO HAS SERVED AS A CONSULTANT AND TRAINER FOR NUMEROUS NATIONAL INITIATIVES, INCLUDING SAMHSA-FUNDED PROGRAMS AND THE NATIONAL HISPANIC & LATINO MHTTC. HE IS A LEADING TRAINER FOR THE CLAREJ MATRIX MODEL OF SUBSTANCE USE TREATMENT, SPECIALIZING IN WORK WITH TRIBAL AND INDIGENOUS COMMUNITIES ACROSS THE U.S. AND INTERNATIONALLY. A FORMER PROFESSOR AND CULTURAL COMPETENCY LEADER, DR. ROMERO BRINGS DEEP EXPERTISE IN EQUITY-CENTERED LEADERSHIP AND BEHAVIORAL HEALTH SYSTEMS.

RSVP REQUIRED - VIRTUAL ONLY

## **VIRTUAL - ZOOM**

SPOTS LIMITED - 3 CEUS

THURSDAY  
**SEP 23**  
9A-12P

RSVP AT  
[HTTPS://TINYURL.COM/LC3TR25](https://tinyurl.com/LC3TR25)  
OR SCAN QR CODE  
FREE VIRTUAL TRAINING  
SPOTS LIMITED

FOR MORE INFORMATION  
CONTACT JAVIER GUERRERO,  
ICS STRATEGIST AT  
JGUERRERO@FYINM.ORG





Hi Future Social Workers!

Did you know that VOTING is recognized as a social determinant of health and that every election is a health care election!!

Why is it important for social workers to become civically engaged? An article by UCONN Today explains it nicely, but if you don't have the time to read it, let me break it down for you. Social Workers have the means to reach non-voters and those least likely to vote. We are working directly with impacted communities and populations, so who better to encourage civic engagement?!

Now you know WHY social workers need to be civically engaged, but what do we do next?

September 16th is National Voter Registration Day!! It's more important than ever to help your community stay informed and prepared to vote. Overwhelmingly, the reason most people do not vote is because they did not make a clear plan, and the opportunity passed them by. Check out the Voting Plan Checklist and be sure to share with friends, family, neighbors, Sprouts clerk, and that person you always see out walking their dog.

Not sure if you are registered? You can check your voter registration, register to vote and learn about upcoming elections here: <https://vote.health/nmsuphs>

Want to learn more about the 2025 Healthy Democracy Campaign and join NMSU's team in building a healthier democracy? Contact Leslie Konesheck @ [lhkone@nmsu.edu](mailto:lhkone@nmsu.edu)





Welcome back students! Last Spring we launched a **Faculty Recognition program**. We are excited to continue recognizing faculty this year. If there is an instructor/advisor/administrator who has helped you during your time at NMSU, consider nominating them for this honor. Please scan the QR code or click link below to vote!

**CLICK HERE**

## Outstanding Faculty Recognition Form







# How SW Student Peer Support can Help!



## Emotional Support

With the most current events and changes, we are here to listen to your concerns, provide a safe space for all thoughts and feelings, and offer coping strategies. You are not alone, and we are in this together!



## Academic Support

We are students too, and we want to share our knowledge and tips to help you all succeed as you navigate the Social Work Program and develop the skills and confidence throughout your journey



## Professional Development

We can help you with all inquiries regarding resume building, filling out applications, interview preparation, career planning, skill development, and networking opportunities



## Community Building

We strive to create an inclusive and welcoming environment where students can build meaningful connections with their peers through social events, meet & greets, and collaborative learning experiences



Scan here to make an appointment with us:

We hope to connect with you!





# OFFICE HOURS

**Monday**  
5 PM - 7 PM

**Tuesday**  
7 AM - 9 AM / 5 PM - 8 PM

**Wednesday**  
7 AM - 9 AM

**Thursday**  
7 AM - 9 AM / 5 PM - 8 PM

**Friday**  
7 AM - 9 AM / 1 PM - 7 PM

Can't meet at these times? Schedule  
an appointment using our QR code!

**Office Location:**

HSS Building, 2nd floor, room 201

**Zoom Link:**

[https://nmsu.zoom.us/j/831912592  
21#success](https://nmsu.zoom.us/j/83191259221#success)



**nmsu\_socialworkpeersupport**





**Careers & Opportunities** webpage dedicated to connecting you with meaningful job openings. From roles within NMSU to opportunities in the broader community, this page is designed to help you find positions that align with your passion and expertise. Visit the page to explore the latest listings and take the next step in your career!



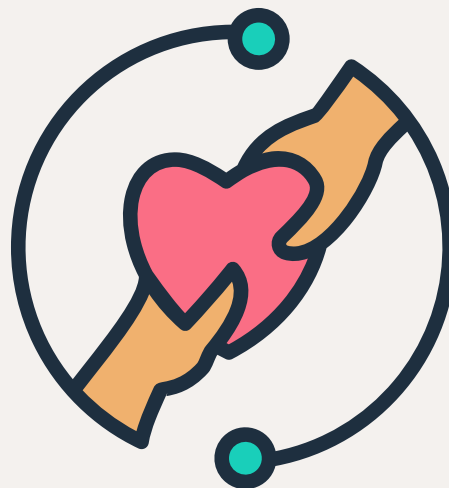
**Careers & Opportunities**





# CONNECT WITH US

## School of Social Work Website



## Facebook



## Instagram



Stay tuned for the latest updates, stories, and highlights from the School of Social Work!

In next week's edition, we'll bring you:

- Spotlights on Recent Achievements
- Upcoming Events and Workshops
- Student and Faculty Features
- Useful Resources and Tips

Got something to share or a question to ask?

Feel free to reach out to us:

✉ [socwork@nmsu.edu](mailto:socwork@nmsu.edu)

☎ Phone: 575-646-2143

🏢 Office: HSS 210

We'd love to hear from you and feature your news in our next issue!

