

# The Social Buzz

## School of Social Work

July 2025

### MESSAGE FROM DIRECTOR

Dear Students,

As we find ourselves in the middle of summer, I hope you're taking time to recharge, reflect, and perhaps enjoy some well-deserved rest.

#### Preparing for Fall

As we look ahead to the fall semester, our faculty and staff are working diligently to ensure you have the support and resources you need to succeed. We're excited about several new initiatives launching this year, including a certificate in School Social Work, and more funding opportunities for paid practicums. Don't forget to join us on August 18 for our School of Social Work Kick off (flyer below)!

#### Community and Connection

Even during the summer months, remember you are part of a vibrant community of future social workers. Stay connected with your classmates, reach out to faculty and don't hesitate to contact our new Academic Advisor, Martin Arvizuo (info below) for any support navigating your class schedules. The challenges of social work education are best met together.

#### Self-Care Reminder

As future social workers, you'll spend your careers caring for others—but that work begins with caring for yourselves. Use this summer to establish healthy boundaries, practice stress management techniques, and engage in activities that bring you joy. The habits you build now will serve you throughout your career.

#### Looking Forward

The work you're preparing for has never been more crucial. Our communities need compassionate, skilled social workers who understand both the challenges and the profound opportunities to make a difference. Your dedication to this field inspires all of us, and we're honored to be part of your educational journey. Enjoy the remainder of your summer, and we look forward to seeing you in the fall semester ready to continue this important work together.

Most Sincerely,



Dr. Mary Nienow, Director





# WELCOME!



We are pleased to introduce Martin, your new Lead Academic Advisor for the School of Social Work. Martin joins us from NMSU's Center for Advising and Student Support (CAASS), where he advised students in the Applied Social and Behavioral Sciences program.

Martin is excited to support you with academic planning, course registration, degree audits, financial aid appeals, and more. He is available for virtual or in-person meetings (Room 210D, School of Social Work).

**To schedule an appointment, please use this link: [Martin's Calendly](#)**

When reaching out, be sure to include your:

Name

Student ID

Campus (Main or Global)

Program (BSW or MSW)

Please join us in welcoming Martin to the School of Social Work!





## Spotlight on Social Work Student Sara Hipps

Sara Hipps, a Daniels Fund Boundless Opportunity scholar and recent NMSU graduate, returned to college to set an example for her children—one of whom is now an NMSU freshman. As she begins the Master of Social Work program this summer, Hipps credits the mentorship she received through the Student Success Center with helping her navigate financial aid, build community, and stay motivated. “It’s not just a scholarship—it’s a support system,” she says.



[!\[\]\(cbe80b694ebd74fcfe136a095b608235\_img.jpg\) Read the full story](#)





# GRADUATE STUDENT SOCIAL WORK ASSOCIATION



Promote supportive interaction among social work graduate students, faculty, administration, social service agencies and the community.



Connect MSW level students with planning and decision making opportunities to foster growth as social justice advocates, social planners and policy makers.



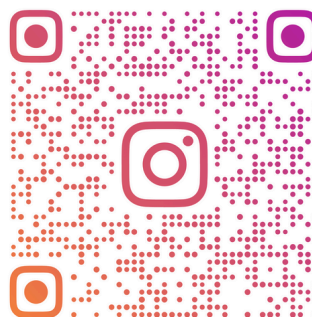
Sponsor learning opportunities for students, staff, and the community.

## CONNECT WITH US!

✉ [OFFICERSGSSWA@GMAIL.COM](mailto:OFFICERSGSSWA@GMAIL.COM)

📷 [GSSWA.NMSU](https://www.instagram.com/GSSWA.NMSU)

📍 COLLEGE OF HEST (HSS)



[GSSWA.NMSU](https://www.instagram.com/GSSWA.NMSU)

NM  
STATE







# ASOCIACIÓN ESTUDIANTIL DE TRABAJO SOCIAL



Promocionamos el apoyo y la interacción entre estudiantes de posgrado, la facultad, la administración, las agencias de servicio social, y la comunidad.



Conectamos estudiantes de MSW para planear y tomar decisiones que promueven la justicia social, fomentan el crecimiento, y avanza pólizas.



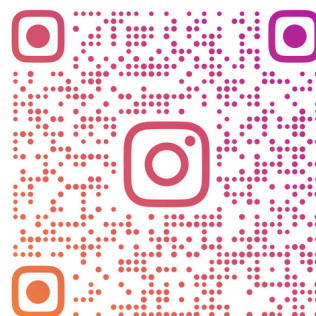
Patrocinamos oportunidades de aprendizaje para los estudiantes, la facultad, y la comunidad.

## ¡CONÉCTATE CON NOSOTROS!

✉ [OFFICERSGSSWA@GMAIL.COM](mailto:OFFICERSGSSWA@GMAIL.COM)

📷 [GSSWA.NMSU](https://www.instagram.com/GSSWA.NMSU)

📍 COLLEGE OF HEST (HSS)



[GSSWA.NMSU](https://www.instagram.com/GSSWA.NMSU)

NM  
STATE



The Social Buzz



[socialwork.nmsu.edu](https://socialwork.nmsu.edu) 5





Are you interested in a career in child welfare and obtaining financial assistance during your Social Work academic program? We have an opportunity for you!

The Child Welfare Scholar Program (CWSP) continues accepting applications for the 2025 – 2026 academic year. Approximately five (5) awards remain available for this year! For additional information, visit the Child Welfare Website or contact Mónica Montoya, CWSP Director, at 575-646-6342 or by email at [monicamo@nmsu.edu](mailto:monicamo@nmsu.edu).

**SCHOLAR AWARD AMOUNTS:**

\$10,000 for MSW 3-year students

- Required 12-month CYFD work agreement

\$11,000 for BSW students

- Required 18-month CYFD work agreement

\$12,000 for MSW Adv. Standing/2-year students

- Required 18-month CYFD work agreement

**PROGRAM REQUIREMENTS:**

- Be officially admitted into the School of Social Work and in good standing

- Cumulative GPA of 3.0

- Complete. Required practicum placement with CYFD-Protective Services

- Complete child welfare course elective(s)

- Be willing to accept employment with CYFD Protective Services upon graduation.



**BE BOLD. Shape the Future.®**  
**School of Social Work**





# Calling all Social Workers!

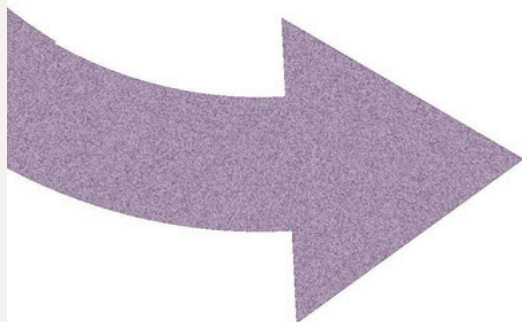
VOLUNTEERS NEEDED FOR RESEARCH STUDY ON  
THE SELF-CARE APPROACHES OF SOCIAL WORKERS

## ELIGIBILITY

1. Must be a social worker
2. Must be practicing or doing MSW internship

## PARTICIPATION

1. Completing a survey (10-20 minutes)
  2. Participating in one focus group session via Zoom with other social work professionals in your area of specialization (60 minutes)
- \* Overall active participation time is about 1.33 hours
  - \* The focus group sessions will take place via Zoom after data has been collected through the survey.



**SIGN UP**

If you have any questions about the study or would like to express interest, please email Dr. Itunu Ilesanmi at [itunu.ilesanmi@uni.edu](mailto:itunu.ilesanmi@uni.edu).







# SPEAK YOUR TRUTH, IN ANY LANGUAGE: QUEERING THERAPY FOR BILINGUALS

Engage in a series of heart-to-heart conversations (pláticas~testimonios) to share our opinions about how to make therapy a safe and authentic space for the queer and bilingual community in the borderlands.

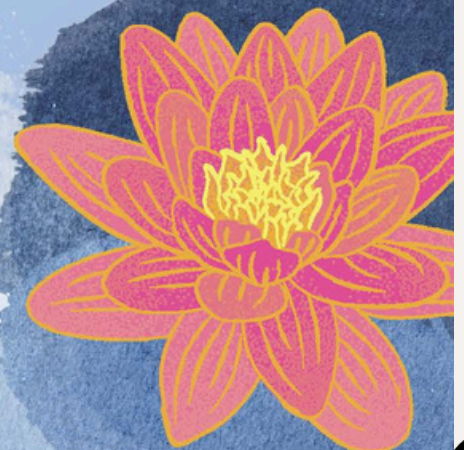
## You can participate if you:

\*Seeking participants until December 2025

- Are 18 years of age or older
- Live in Las Cruces, El Paso, or the surrounding area
- Speak Spanish and English
  - (You're bilingual)
- Identify as queer or LGBTQIA+
- Have formerly or are currently using both languages in therapy



Questions? Contact:  
Sophia Daley [sophiad@nmsu.edu](mailto:sophiad@nmsu.edu)







# Available now at *The Center Plaza*

## ASWB Licensure Preparation Course

Scan me



**Registration Open!**

### HOW IT'S STRUCTURED:

- 100% Asynchronous
- Video Content Review
- Handouts Provided
- 150 Practice Test Questions

**6 CEU's**

*To promote equity in licensure pass rates in NM, this free course is funded by a Department of Labor grant charged with serving diverse students and communities. This course is designed to support NM students and practitioners to thrive.*



Contact the CESW Team: [nmcesw.org](http://nmcesw.org)

Register on Canvas Catalog: [learn.nmcesw.org](http://learn.nmcesw.org)



**The Social Buzz**



[socialwork.nmsu.edu](http://socialwork.nmsu.edu) 9





# CENTER FOR EXCELLENCE IN SOCIAL WORK

## PROFESSIONAL DEVELOPMENT WORKSHOP OFFERINGS



Make Social Work Work For You:  
Career Fulfillment for Social Workers  
on July 25, 2025 • CEUs 3 • \$45



Feminist Multicultural Counseling:  
Advanced Techniques on August 8, 2025  
• CEUs 3 Cultural • \$45



Foundations in Psychedelic-Assisted Therapy  
for Social Workers on August 30, 2025  
• CEUs 3 Cultural & Ethics • \$45

ENROLL ON CANVAS CATALOG  
[learn.nmcesw.org](https://learn.nmcesw.org)

Contact the CESW Team: [nmcesw.org](https://nmcesw.org)



SCAN ME







**CENTER FOR  
EXCELLENCE**  
IN SOCIAL WORK

**CEUS**

**3**

**\$45**

# **MAKE SOCIAL WORK WORK FOR YOU: CAREER FULFILLMENT FOR SOCIAL WORKERS**

**JULY 25, 2025 (Friday)**

**9 am–12:15 pm MT**

**ZOOM Training**

**w/ CANVAS Learning Platform**

**ENROLLMENT @**  
[learn.nmcesw.org](https://learn.nmcesw.org)



**SCAN ME**

**PRESENTER: Nicki Sanders, MSW, is Founder and  
CEO of Nicki Sanders Leadership Consulting**



**The Social Buzz**



[socialwork.nmsu.edu](https://socialwork.nmsu.edu) 11



**CENTER FOR  
EXCELLENCE**  
IN SOCIAL WORK

**CEUS 3  
CULTURAL**

**\$45**

# **FEMINIST MULTICULTURAL COUNSELING: ADVANCED TECHNIQUES**



**AUGUST 8, 2025 (Friday)**

**1 pm–4:15 pm MT**

**ZOOM Training**  
w/ **CANVAS** Learning Platform

**ENROLLMENT @**  
[learn.nmcesw.org](https://learn.nmcesw.org)

**PRESENTER: LINDA NAJJAR, PH.D.**



**SCAN ME**



**The Social Buzz**



[socialwork.nmsu.edu](https://socialwork.nmsu.edu) 12





**CENTER FOR  
EXCELLENCE**  
IN SOCIAL WORK

**\$45**

**CEUS 3  
CULTURAL  
& ETHICS**

# **FOUNDATIONS IN PSYCHEDELIC-ASSISTED THERAPY FOR SOCIAL WORKERS**

**AUGUST 30, 2025 (Saturday)**  
9 am–12:15 pm MT

**ZOOM Training**  
w/ **CANVAS Learning Platform**

**ENROLLMENT @**  
[learn.nmcesw.org](https://learn.nmcesw.org)



**SCAN ME**

**PRESENTER: MARISA L. C DE BACA, LMSW**



**The Social Buzz**



[socialwork.nmsu.edu](https://socialwork.nmsu.edu) 13



# WHAT IS PLUGGED-IN-FOR-GOOD?

## Las Cruces, neighbors!

We can fix up your home to use less electricity and stay cooler in summer and warmer in winter.

Our program, Plugged In For Good, helps local families save money every month on their utility bills. We'll teach local people the skills to do this work, creating good jobs right here in our community. Together, we can make Las Cruces a place where everyone can afford their energy bills and have a comfortable home.



### Find your family size & income level below

| FAMILY MEMBERS | QUALIFIES FOR MOST STATE & LOCAL REBATES | INCOME THRESHOLD |
|----------------|--|------------------|
| 1              | \$30,120 or less                         | up to \$39,550   |
| 2              | \$40,880 or less                         | up to \$45,200   |
| 3              | \$50,850 or less                         | up to \$51,640   |
| 4              | \$56,500 or less                         | up to \$62,400   |
| 5              | \$61,050 or less                         | up to \$73,160   |
| 6              | \$65,550 or less                         | up to \$83,920   |
| 7              | \$70,100 or less                         | up to \$94,680   |
| 8              | \$74,600 or less                         | up to \$105,760  |

Disclaimer: amount of rebates will depend on verified income level.

### Who is Eligible for this Program?

- ✓ Own a home
- ✓ Receive government assistance (like SNAP or Medicaid)
- ✓ Qualify as low-income (based on state or federal guidelines)

CONTACT US TO SIGN UP FOR A FREE HOME CHECK-UP:  
[pluggedinforgood@gmail.com](mailto:pluggedinforgood@gmail.com) | (575)541-2175

PLUGGED-IN  
FOR GOOD







# ¿QUÉ ES PLUGGED-IN-FOR-GOOD?

## ¡Vecinos de Las Cruces!

Podemos arreglar su hogar para que gaste menos electricidad y se mantenga más fresco en verano y más cálido en invierno.

Nuestro programa Plugged in For Good **ayuda a familias locales a ahorrar dinero todos los meses en sus facturas de servicios públicos**. Capacitaremos a personas locales para que puedan realizar este trabajo, creando buenos empleos aquí mismo en nuestra comunidad. **Juntos, podemos hacer que Las Cruces sea un lugar donde todo el mundo pueda pagar sus facturas energéticas y tener un hogar confortable.**



| NRO. DE MIEMBROS EN LA FAMILIA | CUMPLE REQUISITOS PARA LA MAYORÍA DE LOS DESCUENTOS ESTATALES Y LOCALES | CUMPLE REQUISITOS PARA LA MAYORÍA DE LOS DESCUENTOS FEDERALES |
|--------------------------------|---|---|
| 1                              | \$30,120 o menos  | hasta \$39,550  |
| 2                              | \$40,880 o menos  | hasta \$45,200  |
| 3                              | \$50,850 o menos  | hasta \$51,640  |
| 4                              | \$56,500 o menos  | hasta \$62,400  |
| 5                              | \$61,050 o menos  | hasta \$73,160  |
| 6                              | \$65,550 o menos  | hasta \$83,920  |
| 7                              | \$70,100 o menos  | hasta \$94,680  |
| 8                              | \$74,600 o menos  | hasta \$105,760   |

Aviso legal: el monto de los descuentos dependerá del nivel de ingresos confirmado

## ¿Quién cumple los requisitos para acceder a este programa?

- ✓ Ser propietario de una casa
- ✓ Recibir asistencia del gobierno (SNAP o Medicaid por ejemplo)
- ✓ Sus ingresos sean iguales o inferiores a las cantidades mostradas en la gráfica

**PÓNGASE EN CONTACTO CON NOSOTROS Y REGÍSTRESE PARA QUE PLUGGED IN FOR GOOD REALICE UNA AUDITORÍA DE SU HOGAR GRATIS:**  
[pluggedinforgood@gmail.com](mailto:pluggedinforgood@gmail.com) | (575)541-2175

**PLUGGED-IN  
FOR GOOD**





**Careers & Opportunities** webpage dedicated to connecting you with meaningful job openings. From roles within NMSU to opportunities in the broader community, this page is designed to help you find positions that align with your passion and expertise. Visit the page to explore the latest listings and take the next step in your career!



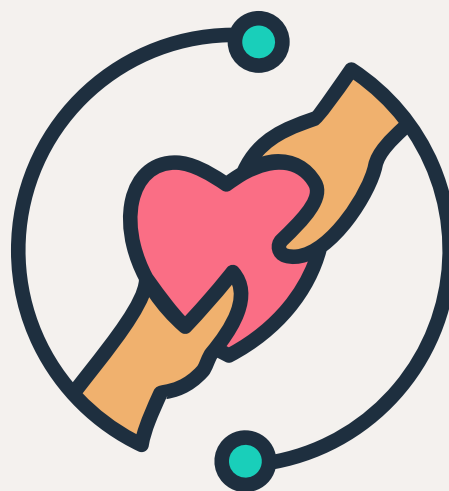
**Careers & Opportunities**





# CONNECT WITH US

## School of Social Work Website



## Facebook



## Instagram



Stay tuned for the latest updates, stories, and highlights from the School of Social Work!

In next week's edition, we'll bring you:

- Spotlights on Recent Achievements
- Upcoming Events and Workshops
- Student and Faculty Features
- Useful Resources and Tips

Got something to share or a question to ask?

Feel free to reach out to us:

✉ [socwork@nmsu.edu](mailto:socwork@nmsu.edu)

☎ Phone: 575-646-2143

🏢 Office: HSS 210

We'd love to hear from you and feature your news in our next issue!

