

School of Social Work

MESSAGE FROM DIRECTOR

A collection of 18 stylized human figures in various professions, including a construction worker, a nurse, a pilot, a chef, a firefighter, a doctor, a chef, a construction worker, a nurse, a pilot, a chef, a firefighter, a doctor, a chef, a construction worker, a nurse, a pilot, a chef, a firefighter, and a doctor. The figures are arranged in a scattered pattern on a plain white background. Each figure is depicted in a simplified, flat style with distinct colors and shapes representing their respective roles. For example, there is a construction worker in an orange jumpsuit and hard hat, a nurse in a blue uniform and cap, a pilot in a blue uniform and cap, a chef in a white uniform and tall hat, a firefighter in an orange jumpsuit and helmet, a doctor in a white lab coat and stethoscope, a chef in a white uniform and tall hat, a construction worker in an orange jumpsuit and hard hat, a nurse in a blue uniform and cap, a pilot in a blue uniform and cap, a chef in a white uniform and tall hat, a firefighter in an orange jumpsuit and helmet, a doctor in a white lab coat and stethoscope, a chef in a white uniform and tall hat, a construction worker in an orange jumpsuit and hard hat, a nurse in a blue uniform and cap, a pilot in a blue uniform and cap, a chef in a white uniform and tall hat, a firefighter in an orange jumpsuit and helmet, and a doctor in a white lab coat and stethoscope.





IMPORTANT DEADLINE REMINDER

This Friday — August 29, 2025

**Two important deadlines
for students:**



Add a Full-Term Course (Instructor Permission Required)

Friday is the last day students can add a full-term course with instructor approval.



Application for Degree (No Late Fee)

Students graduating in **December 2025** must file their Application for Degree by Friday to avoid a late fee.

- Applies to degrees, minors, and graduate certificates
- Students must be formally admitted to the program(s) for which they are applying



More details: NMSU Academic Calendar 2025

CLICK HERE

<https://records.nmsu.edu/academic-calendar/2025.html>





Social Work Students: Your Voice Matters!

Listening Session

Share your experiences, ideas, and vision for the School of Social Work, openly or anonymously, in a **student-led space** via Zoom

Please scan the QR code to fill out the survey and tell us what you want to see!

SURVEY
CLICK HERE



CLICK HERE to Join:



Friday on Sept.
5, 2025

6:00 pm -
7:00 pm





NM STATE BE BOLD. Shape the Future.
School of Social Work

DSJ Student Fellowship 2025-2026

This Diversity and Social Justice (DSJ) fellowship will support students and encourage meaningful engagement in directed learning activities that challenge structural inequalities, foster an inclusive academic environment and expand equity engagement with the communities served by the NMSU School of Social Work. This fellowship is sponsored by the DSJ committee.

Thank you to all students who have shown interest in the Diversity and Social Justice Fellowship! We've been impressed by the quality and thoughtfulness of applications received so far.

Due to the high volume of strong applications, we're extending our review timeline to ensure each submission receives thorough consideration. Applicants will be notified of their status by September 15, 2025.

Applications are still being accepted through August 31st for students who haven't yet applied.

We appreciate your patience as our selection committee works through this comprehensive review process. Questions? Contact Prof. Valdespino, DSJ Chair, at amvaldes@nmsu.edu

APPLY NOW





Welcome back students! Last Spring we launched a **Faculty Recognition program**. We are excited to continue recognizing faculty this year. If there is an instructor/advisor/administrator who has helped you during your time at NMSU, consider nominating them for this honor. Please scan the QR code or click link below to vote!

CLICK HERE

Outstanding Faculty Recognition Form

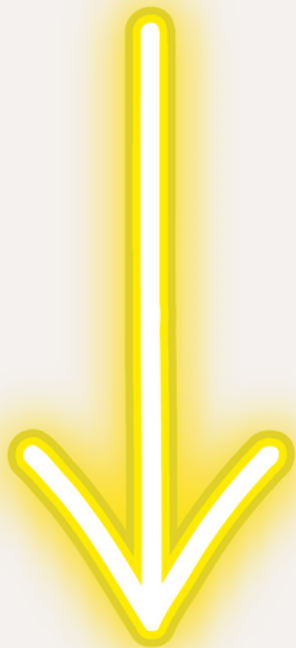




Starting a New Semester? We've Got Your Back!

The start of school is exciting, but it can also feel like a whirlwind of registration forms, course schedules, transfer credits, financial aid, and graduation requirements. If you're wondering where to even begin, you don't have to figure it out alone. The School of Social Work is here to help you get off to a strong start.

That's what the Student Support Form is for. Instead of guessing who to email or running from office to office, you can simply fill out the form (or scan the QR code in the flyer). Whether it's academic advising, program requirements, enrollment, transfer credits, financial aid, or practicum questions, we'll make sure your request gets to the right person.





Need Help with Academic Advising or Registration? We're Here to Support YOU!

Whether you're navigating program requirements, course scheduling, financial aid, transfer credits, or graduation, we've got you covered!

Fill out our support form to get assistance!

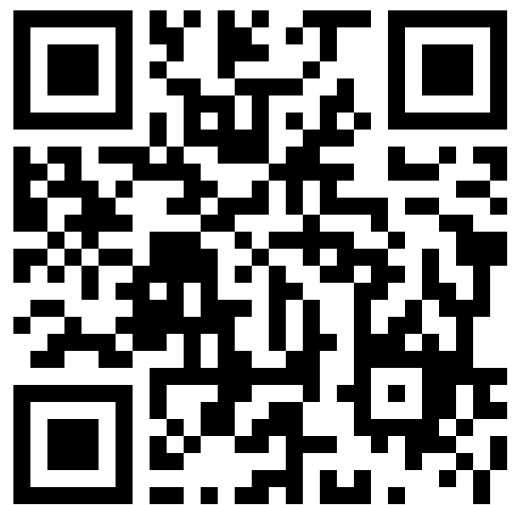


CLICK HERE



What can we help with?

- Academic Advising
- Program Requirements
- Registration & Enrollment
- Financial Aid Questions
- Course Scheduling
- Transfer Credits
- Graduation Requirements
- and much more!



Once you submit your inquiry, one of our team members will get back to you soon with the support you need. Please allow 24 hours for response. If you need immediate help, you can reach out to one of our key contacts:

- **SW Academic Advisor:** Martin Arvizuo, jarvizuo@nmsu.edu
- **Global Campus Advisor:** globaladvising@nmsu.edu or 646-3568
- **BSW Program Coordinator:** Professor Palomino-Pantoja, paulinam@nmsu.edu
- **MSW Program Coordinator:** Dr. Brown, shbrown@nmsu.edu
- **Practicum Director:** Professor Tellez, tellezm@nmsu.edu

We're here to help you succeed! Reach out anytime!





Social Work & Political Resistance: The Role of Social Work in Mutual Aid

September 18, 2025 | 6 p.m. – 7:30 p.m. ET | [Register](#)



As future social workers, you're stepping into the field during a time of deep social and systemic disruption. Mutual aid—communities coming together to meet each other's needs when institutions fail or cause harm—is a powerful tool for justice and care. But mutual aid isn't charity. It's about solidarity, challenging inequality, and building new ways of supporting one another outside of broken systems. This webinar invites you to explore how mutual aid, abolition, and transformative justice connect to social work values and practice. We'll unpack the question: Can the profession evolve to truly support radical change, or will it stay tied to systems that maintain the status quo? Learn how you can be part of shaping a more just and liberated future through your work and advocacy.

Presenter: Chris Fike, MS, LMSW-Macro. Region 5 Representative on the NASW-MI Board of Directors





How SW Student Peer Support can Help!



Emotional Support

With the most current events and changes, we are here to listen to your concerns, provide a safe space for all thoughts and feelings, and offer coping strategies. You are not alone, and we are in this together!



Academic Support

We are students too, and we want to share our knowledge and tips to help you all succeed as you navigate the Social Work Program and develop the skills and confidence throughout your journey



Professional Development

We can help you with all inquiries regarding resume building, filling out applications, interview preparation, career planning, skill development, and networking opportunities



Community Building

We strive to create an inclusive and welcoming environment where students can build meaningful connections with their peers through social events, meet & greets, and collaborative learning experiences



Scan here to make an appointment with us:

We hope to connect with you!





OFFICE HOURS

Monday
5 PM - 7 PM

Tuesday
7 AM - 9 AM / 5 PM - 8 PM

Wednesday
7 AM - 9 AM

Thursday
7 AM - 9 AM / 5 PM - 8 PM

Friday
7 AM - 9 AM / 1 PM - 7 PM

Can't meet at these times? Schedule
an appointment using our QR code!

Office Location:

HSS Building, 2nd floor, room 201

Zoom Link:

[https://nmsu.zoom.us/j/831912592
21#success](https://nmsu.zoom.us/j/83191259221#success)



nmsu_socialworkpeersupport





EID WELCOME BACK EVENTS FALL 2025



SCAN HERE TO VIEW THE
LATEST EVENT UPDATES!

ALL ARE WELCOME

**27
AUGUST**

**AMERICAN INDIAN
PROGRAM OPEN HOUSE**

4:00 PM - 6:00 PM



AMERICAN
INDIAN
STUDENT
CENTER

**28
AUGUST**

**LAP: TARDECITA
LATINA**

12:00 PM - 1:30 PM



GARCIA
CENTER
GRASSY AREA

**28
AUGUST**

**WAVES OF HERITAGE:
API WELCOME BACK**

2:00 PM - 6:00 PM



GARCIA
CENTER
ROOM 133

**08
SEPTEMBER**

**LGBT+ PROGRAMS
OPEN HOUSE**

4:00 PM - 6:00 PM



LGBT+
PROGRAMS
CORBETT
ROOM 208





Teaching Academy

Foundational Teaching Series for Graduate Students

Oana Cimpean
Teaching Academy

Like any new teacher, you probably wondered how to start designing your own course. Come join us and find out:

- ▶ which evidenced-based practices lead to student learning
- ▶ how to motivate students
- ▶ how to create a classroom community



Fridays
September 12, 19, 26; October 3
9–11
Zoom

Registration is required at teaching.nmsu.edu. If you have problems registering online, call 646–2204 for help.





9th Annual Recovery Celebration

YOUNG PARK

Las Cruces Suicide Prevention Task Force

 **SATURDAY,**
SEPT. 13, 2025

 **10:00AM - 2:00 PM**

**Dedicated to promoting recovery from
mental health and substance
conditions.**

***Come as
YOU are!***



- SOUND BATH & YOGA IN THE PARK
- LIVE DJ
- FREE CHILDCARE!
- LOCAL RESOURCES
- COMMUNITY VENDORS
- FAMILY ACTIVITIES
- COMMUNITY ALTER



The Social Buzz



socialwork.nmsu.edu 13





Holding Space:

A Beyond 2025 Open Dialogue

Holding Space

A Beyond 2025 Open Dialogue

Thursday, August 28

7:00-8:00PM ET

Zoom

As the new administration signs executive orders and Congress passes bills disrupting all areas of civil society, many of us are left wondering how we can protect ourselves and support our colleagues and communities. During this on-going virtual series, we invite you to connect with your peers from across the country and gain ideas, resources, strength and courage in these uncertain times.

[REGISTER HERE](#) >



The Social Buzz



socialwork.nmsu.edu

14





Campus Tutoring Services announces fall hours

Campus Tutoring Services in Corbett Center Student Union, Room 206, will open for the fall semester Wednesday, Aug. 20. Students can access tutorial services in-person or online via Zoom and schedule appointments through Navigate. Hours of operation for the fall semester are as follows:

- 9 a.m. to 8 p.m. Monday through Thursday.
- 9 a.m. to 5 p.m. Friday.
- 4 to 8 p.m. Sunday.

Campus Tutoring Services, led through a peer-tutor model, enhances students' self-belief, giving students control over learning processes and developing confidence and commitment to learning. Campus Tutoring offers a strong and integrated academic support service to students led by experienced and nationally accredited peer tutors. CTS peer tutors are the only College Reading and Learning Association-certified Level 1 and Level 2 tutors who serve the entire NMSU campus.

For more information, contact Marci Salinas-Milam at 575-646-1342 or salinasm@nmsu.edu, or click [here](#).

Fall JC Penney Suit-Up Event set for Sept. 14

NMSU is partnering with JCPenney for its semiannual JCPenney Suit-Up event, featuring up to 45% off of select men's and women's career dress apparel, shoes and accessories. Shop everything you need to finish your look for that next career fair, interview or new job. The event will take place from 3 to 6 p.m. Sept. 14 at the JCPenney store inside Mesilla Valley Mall in Las Cruces.

The event is open to all NMSU students, faculty, staff and their family and friends. For those unable to attend in person, shop online by texting NMSUAGGIES to 67292 to get your 30% coupon delivered to your phone. The coupon will be valid from Saturday, Aug. 23, to Nov. 2, and the codes are available to start texting. Enjoy a free hair consultation at the JCPenney Salon.

JCPenney and NMSU Nusenda Center for Financial Capability will be giving away gift cards, prizes and shopping tote bags throughout the event. For more information, contact Marcia Salinas-Milam at 575-646-1342 or salinasm@nmsu.edu.





Careers & Opportunities webpage dedicated to connecting you with meaningful job openings. From roles within NMSU to opportunities in the broader community, this page is designed to help you find positions that align with your passion and expertise. Visit the page to explore the latest listings and take the next step in your career!

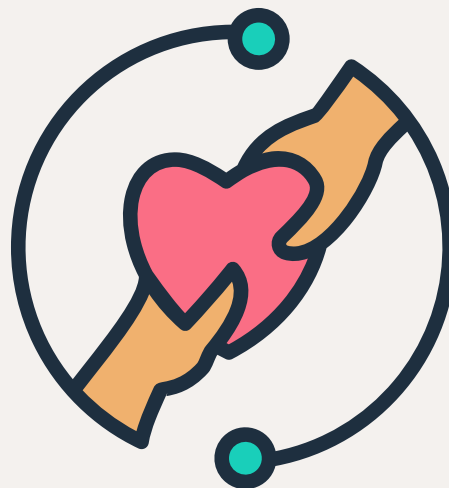


Careers & Opportunities



CONNECT WITH US

School of Social Work Website



Facebook



Instagram



Stay tuned for the latest updates, stories, and highlights from the School of Social Work!

In next week's edition, we'll bring you:

- Spotlights on Recent Achievements
- Upcoming Events and Workshops
- Student and Faculty Features
- Useful Resources and Tips

Got something to share or a question to ask?

Feel free to reach out to us:

✉ socwork@nmsu.edu

☎ Phone: 575-646-2143

🏢 Office: HSS 210

We'd love to hear from you and feature your news in our next issue!

