

# The Social Buzz

## School of Social Work

**August 20-26 2025**

### MESSAGE FROM DIRECTOR

Let's make it a great year!

On Monday we held our School of Social Work Academic Kick-off. It was so exciting to be with over 100 of you both in person and online. My only regret is not taking pictures, so if anyone took a snapshot, please send it over! Your energy and enthusiasm were contagious and I could feel my own mood and those of the faculty lift throughout the day. We cannot wait to get to know you better and assist along your academic journey to becoming a professional social worker.

A colleague of mine sent out a message from the late Congressman John Lewis, and I wanted to share it with you. It captures exactly how I feel right now and reminds me none of us is alone in the work we do:

"Take a long, hard look down the road you will have to travel once you have made a commitment to work for change.

Know that this transformation will not happen right away. Change often takes time. It rarely happens all at once...

Ours is not the struggle of one day, one week, or one year...  
Ours is the struggle of a lifetime, or maybe even many lifetimes, and each one of us in every generation must do our part. And if we believe in the change we seek, then it is easy to commit to doing all we can, because the responsibility is ours alone to build a better society and a more peaceful world."

~ In Across That Bridge: A Vision for Change and the Future of America

Have a wonderful semester!



Dr. Mary Nienow, Director



**The Social Buzz**



[socialwork.nmsu.edu](http://socialwork.nmsu.edu) 1



# Social Work Students: Your Voice Matters!

# Listening Session

Share your experiences, ideas, and vision for the School of Social Work, openly or anonymously, in a **student-led space** via Zoom

Please scan the QR code to fill out the survey and tell us what you want to see!

**Survey:**



**Scan Here to Join:**



**Friday on Sept.  
5, 2025**

**6:00 pm -  
7:00 pm**





## YOU SPOKE. WE LISTENED.

The DSJ Committee was thrilled about all the enthusiasm over our 25-26 Student Fellowship! Many of you had questions regarding On-campus vs. Global eligibility. We're excited to extend this update:

We're inviting **ALL** students—on-campus and global—to apply!  
QR code in the flyer below.

DSJ Committee  
School of Social Work







**BE BOLD.** Shape the Future.  
School of Social Work

# DSJ Student Fellowship 2025-2026



This Diversity and Social Justice (DSJ) fellowship will support students and encourage meaningful engagement in directed learning activities that challenge structural inequalities, foster an inclusive academic environment and expand equity engagement with the communities served by the NMSU School of Social Work. This fellowship is sponsored by the DSJ committee.



## Fellowship Announcement

August 13th



## Application Deadline

August 31st



## Fellowship Notification

September 5th

## ABOUT THE FELLOWSHIP

- Collaborate with other DSJ fellows, Faculty Lead and Mentoring Faculty
- Contribute to developing and implementing a DSJ-focused project or initiative
- Engage in community engagement, research, policy analysis, or advocacy efforts
- \$3,000 awarded per academic year

*To Cultivate Future Leaders in Social Work*



**SCAN THE QR CODE TO APPLY**

Applications will be accepted from  
August 13th to August 31st

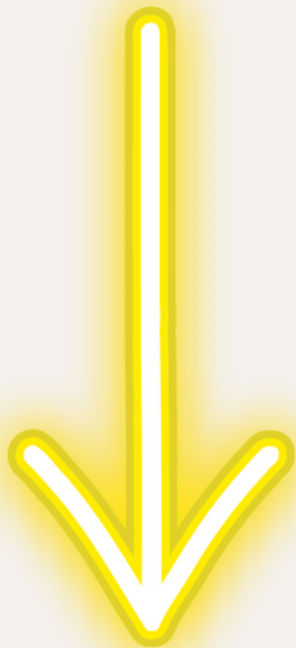




## Starting a New Semester? We've Got Your Back!

The start of school is exciting, but it can also feel like a whirlwind of registration forms, course schedules, transfer credits, financial aid, and graduation requirements. If you're wondering where to even begin, you don't have to figure it out alone. The School of Social Work is here to help you get off to a strong start.

That's what the Student Support Form is for. Instead of guessing who to email or running from office to office, you can simply fill out the form (or scan the QR code in the flyer). Whether it's academic advising, program requirements, enrollment, transfer credits, financial aid, or practicum questions, we'll make sure your request gets to the right person.





## **Need Help with Academic Advising or Registration? We're Here to Support YOU!**

Whether you're navigating program requirements, course scheduling, financial aid, transfer credits, or graduation, we've got you covered!

**Fill out our support form to get assistance!**

### **What can we help with?**

- Academic Advising
- Program Requirements
- Registration & Enrollment
- Financial Aid Questions
- Course Scheduling
- Transfer Credits
- Graduation Requirements
- and much more!



Once you submit your inquiry, one of our team members will get back to you soon with the support you need. Please allow 24 hours for response. If you need immediate help, you can reach out to one of our key contacts:

- **SW Academic Advisor:** Martin Arvizuo, [jarvizuo@nmsu.edu](mailto:jarvizuo@nmsu.edu)
- **Global Campus Advisor:** [globaladvising@nmsu.edu](mailto:globaladvising@nmsu.edu) or 646-3568
- **BSW Program Coordinator:** Professor Palomino-Pantoja, [paulinam@nmsu.edu](mailto:paulinam@nmsu.edu)
- **MSW Program Coordinator:** Dr. Brown, [shbrown@nmsu.edu](mailto:shbrown@nmsu.edu)
- **Practicum Director:** Professor Tellez, [tellezm@nmsu.edu](mailto:tellezm@nmsu.edu)

**We're here to help you succeed! Reach out anytime!**







# NEW MEXICO BEHAVIORAL HEALTH IN 2035

THURSDAY, AUGUST 28TH,  
4:00-5:30PM  
VIA ZOOM

JOIN FORWARD THINKING PRACTITIONERS, YOUTH,  
AND POLICY ADVOCATES GATHERING TO DREAM  
TOGETHER ABOUT WHAT NEW MEXICO'S  
BEHAVIORAL HEALTH SYSTEM CAN LOOK LIKE BY  
2035



PLEASE EMAIL  
[COALITIONFORASAFERALBUQUERQUE@GMAIL.COM](mailto:COALITIONFORASAFERALBUQUERQUE@GMAIL.COM) TO  
RSVP AND RECEIVE ZOOM INFORMATION TO  
PARTICIPATE



## KEY FOCI:

HOW CAN "CULTURAL HUMILITY" INFORM OUR  
BEHAVIORAL HEALTH STRATEGIES AND  
IMPROVE OUTCOMES?

WHAT YOUTH DRIVEN STRATEGIES MAKE THE  
GREATEST DIFFERENCE IN IMPROVING YOUTH  
BEHAVIORAL HEALTH?

WHAT KIND OF BEHAVIORAL HEALTH  
WORKFORCE EXPANSION AND PATHWAY  
DEVELOPMENT IS NEEDED TO MEET THE  
DEMAND?



A BRIEF UPDATE/SYNTHESIS WILL BE PROVIDED  
ABOUT SB3, NEW MEXICO'S RECENT  
BEHAVIORAL HEALTH SYSTEM OVERHAUL,  
FOLLOWED BY PARTICIPANTS SELECTING A  
BREAKOUT ROOM FOCUSED ON ONE OF THE  
ABOVE SUBJECTS AND KEY LEARNINGS / BEST  
PRACTICES WITH THEIR PEERS.





Dear New Mexico Social Work Community,

I am honored to introduce myself as the new Executive Director of the NASW New Mexico Chapter. As we rebuild and revitalize our local chapter, I am excited to bring fresh energy, transparency, and strong advocacy to support our diverse community of social workers.

As part of this rebuilding effort, we are currently accepting applications for several open Board of Directors positions, including:

- Board President
- First Vice President
- Second Vice President for Budget and Finance
- Secretary
- Two Student Board Members (one BSW and one MSW, elected by Chapter membership)
- Eight Regional Board Representatives elected to represent New Mexico's geographical regions

If you are passionate about shaping the future of social work in New Mexico, we encourage you to get involved! [You can apply directly through the Board of Directors tab on our website.](#)

If you have any questions, please contact us at [info.naswnm@socialworkers.org](mailto:info.naswnm@socialworkers.org).

Thank you for being a part of this exciting chapter in NASW New Mexico's journey. We look forward to working together to elevate the profession and make a lasting impact across the state.

With appreciation,

**Lauren Gomez, LCSW**

**Executive Director- New Mexico**

Email: [LGomez.naswnm@socialworkers.org](mailto:LGomez.naswnm@socialworkers.org)

Website: <https://www.socialworkers.org>

Phone: 505-407-5270

Address: PO Box 3053 Albuquerque, NM 87190







## Building Bridges, Not Walls: Resisting Anti-Immigrant Policy

with Laurie Cook Heffron, PhD &  
Esmeralda Rubalcava Hernandez



Across the U.S., immigrant communities face threats of detention without due process and policies that criminalize migration. In Texas, Operation Lone Star has become the blueprint for sweeping anti-immigration efforts that are being adopted across the country.

In this powerful episode of inSocialWork, we speak with social work scholars Laurie Cook Heffron and Esmeralda Rubalcava Hernandez. They tell us about immigration policy in Texas under Operation Lone Star and the long social, historical and political landscape that laid the groundwork for our national programs today. They expose the human and economic tolls of criminalized immigration and offer concrete ways social workers can resist and respond.

From Know Your Rights campaigns and mutual aid networks to rethinking the role of social workers in carceral systems, this conversation challenges us to dream bigger and act in solidarity.

[Listen to the Podcast](#)





BE BOLD. Shape the Future.<sup>™</sup>  
School of Social Work



THE CENTER ON  
IMMIGRATION  
AND CHILD WELFARE  
INITIATIVE

# Supporting Immigrant Children and Families in the Child Welfare System

Challenges & Best Practices for Child Welfare Agencies & Practitioners

## About the training

This self-paced online training addresses the unique challenges and opportunities that arise when working with immigrant children and families in the child welfare system. This training draws from successful immigrant-serving child welfare models across the United States, highlighting policies and practices that have demonstrated positive outcomes. Through interactive modules, case scenarios, and practical resources, participants will learn evidence-based strategies for navigating complex cases involving immigrant families.

**Three free cultural social work CEUs are available from the NMSU School of Social Work.**

**ENROLL NOW!**



## Who is it for?

This training is for administrators, caseworkers, supervisors, attorneys, and other stakeholders who serve immigrant children and families in the child welfare system.

## The Modules

1. Background on Children in Immigrant Families in the Child Welfare System
2. Key Policy & Practice Issues in Child Welfare System

## More info

For more details visit:

<https://cimmcw.org/supporting-immigrant-children-and-families-in-the-child-welfare-system/>

This training was developed with funding from the New Mexico Children, Youth & Families Department.



**The Social Buzz**



[socialwork.nmsu.edu](https://socialwork.nmsu.edu) 10







**BE BOLD. Shape the Future.\***  
School of Social Work



THE CENTER ON  
IMMIGRATION  
AND CHILD WELFARE  
INITIATIVE

## Module Descriptions

- 1 Background on Children in Immigrant Families in the Child Welfare System:** This module provides foundational knowledge on the demographics of immigrant families in the U.S. and the unique vulnerabilities they face within the child welfare system, including the impact of immigration enforcement and trauma. This module also explores common challenges that child welfare practitioners and agencies encounter when serving immigrant children and families as well as guiding principles for ensuring equitable service provision to this vulnerable population.
- 2 Key Policy & Practice Issues in Child Welfare System:** This module highlights effective immigrant-serving models from six jurisdictions across the U.S. It delves into specific policy and practice issues, such as confidentiality, language access, citizenship determination, legal screening, human trafficking, and transnational casework, providing strategies and guidance for culturally responsive engagement and service provision across these issue areas.

## Learning objectives

By the end of this course, learners should be able to:

- 1** Recognize the unique challenges immigrant children and families face within the child welfare system and identify appropriate resources to address their specific needs.
- 2** Apply knowledge of cultural, legal, and systemic factors that impact service delivery to immigrant populations in child welfare settings.
- 3** Implement effective communication strategies that overcome language and cultural barriers and promote meaningful engagement with immigrant children and families throughout the case process.
- 4** Develop competence in navigating complex immigration-related issues, such as immigration status, international family members, or cross-border considerations.
- 5** Integrate evidence-based policies and practices from successful immigrant-serving child welfare models to improve outcomes for immigrant children and families.





# 9th Annual Recovery Celebration

## YOUNG PARK

Las Cruces Suicide Prevention Task Force

 **SATURDAY,**  
**SEPT. 13, 2025**

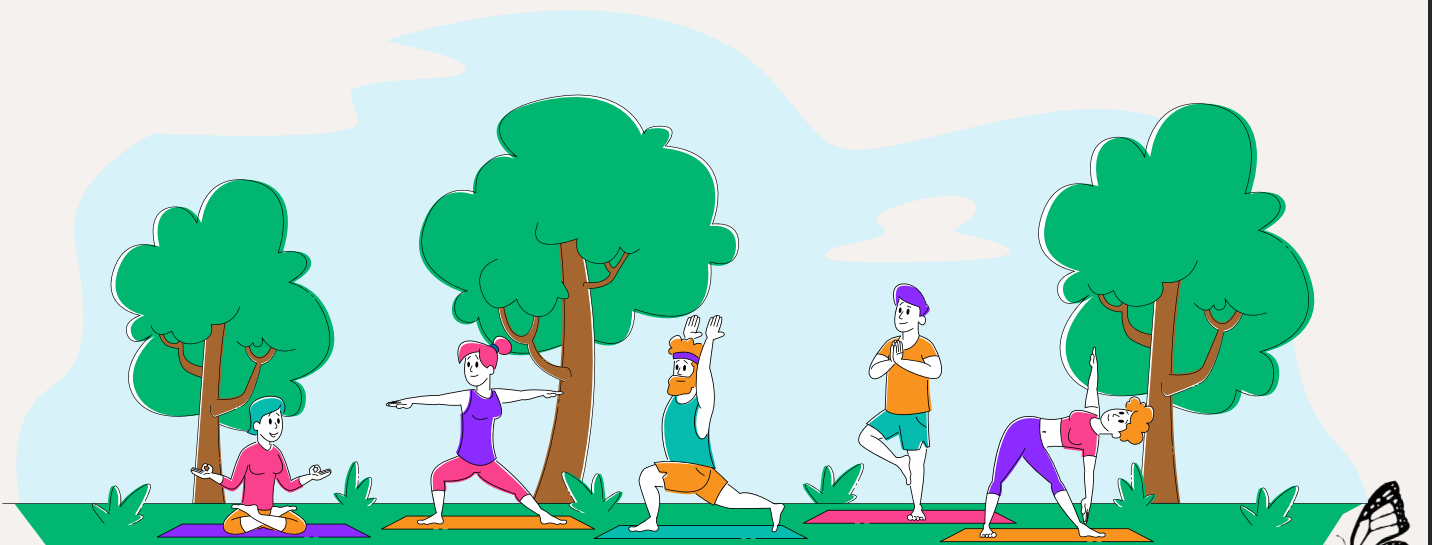
 **10:00AM - 2:00 PM**

**Dedicated to promoting recovery from  
mental health and substance  
conditions.**

***Come as  
YOU are!***



- SOUND BATH & YOGA IN THE PARK
- LIVE DJ
- FREE CHILDCARE!
- LOCAL RESOURCES
- COMMUNITY VENDORS
- FAMILY ACTIVITIES
- COMMUNITY ALTER



**The Social Buzz**



[socialwork.nmsu.edu](http://socialwork.nmsu.edu) 12







## Campus Tutoring Services announces fall hours

Campus Tutoring Services in Corbett Center Student Union, Room 206, will open for the fall semester Wednesday, Aug. 20. Students can access tutorial services in-person or online via Zoom and schedule appointments through Navigate. Hours of operation for the fall semester are as follows:

- 9 a.m. to 8 p.m. Monday through Thursday.
- 9 a.m. to 5 p.m. Friday.
- 4 to 8 p.m. Sunday.

Campus Tutoring Services, led through a peer-tutor model, enhances students' self-belief, giving students control over learning processes and developing confidence and commitment to learning. Campus Tutoring offers a strong and integrated academic support service to students led by experienced and nationally accredited peer tutors. CTS peer tutors are the only College Reading and Learning Association-certified Level 1 and Level 2 tutors who serve the entire NMSU campus.

For more information, contact Marci Salinas-Milam at 575-646-1342 or [salinasm@nmsu.edu](mailto:salinasm@nmsu.edu), or click [here](#).

## Fall JC Penney Suit-Up Event set for Sept. 14

NMSU is partnering with JCPenney for its semiannual JCPenney Suit-Up event, featuring up to 45% off of select men's and women's career dress apparel, shoes and accessories. Shop everything you need to finish your look for that next career fair, interview or new job. The event will take place from 3 to 6 p.m. Sept. 14 at the JCPenney store inside Mesilla Valley Mall in Las Cruces.

The event is open to all NMSU students, faculty, staff and their family and friends. For those unable to attend in person, shop online by texting NMSUAGGIES to 67292 to get your 30% coupon delivered to your phone. The coupon will be valid from Saturday, Aug. 23, to Nov. 2, and the codes are available to start texting. Enjoy a free hair consultation at the JCPenney Salon.

JCPenney and NMSU Nusenda Center for Financial Capability will be giving away gift cards, prizes and shopping tote bags throughout the event. For more information, contact Marcia Salinas-Milam at 575-646-1342 or [salinasm@nmsu.edu](mailto:salinasm@nmsu.edu).





**Careers & Opportunities** webpage dedicated to connecting you with meaningful job openings. From roles within NMSU to opportunities in the broader community, this page is designed to help you find positions that align with your passion and expertise. Visit the page to explore the latest listings and take the next step in your career!



**Careers & Opportunities**



# CONNECT WITH US

## School of Social Work Website



## Facebook



## Instagram



Stay tuned for the latest updates, stories, and highlights from the School of Social Work!

In next week's edition, we'll bring you:

- Spotlights on Recent Achievements
- Upcoming Events and Workshops
- Student and Faculty Features
- Useful Resources and Tips

Got something to share or a question to ask?

Feel free to reach out to us:

✉ [socwork@nmsu.edu](mailto:socwork@nmsu.edu)

☎ Phone: 575-646-2143

🏢 Office: HSS 210

We'd love to hear from you and feature your news in our next issue!

